

LOC	DIST	REVISIONS					
—	—	P	LTR	DESCRIPTION	DATE	DWN	APVD
			A	REVISED PER ECR-14-007825	30MAY2014	RS	EC
			B	ECO-15-015144: ADD UL.	23OCT2015	EC	EC

### SAFETY ORGANIZATIONS

THIS FILTER HAS BEEN FORMALLY RECOGNIZED, CERTIFIED OR APPROVED BY THE LISTED AGENCY. THEREFORE, ALL TEST/REQUIREMENTS SPECIFIED IN THE LATEST REVISION OF THE FOLLOWING AGENCY STANDARDS HAVE BEEN MET: UL

### OPERATING SPECIFICATIONS

LINE CURRENT/VOLTAGE: 250 A, 520 VAC  
LINE FREQUENCY: 50-60 Hz  
NOMINAL LEAKAGE CURRENT: 6 mA  
MAXIMUM LEAKAGE CURRENT: 222mA @ 277V, 50HZ  
OPERATING AMBIENT TEMPERATURE RANGE  
@ RATED CURRENT, I : -10°C TO +50°C

IN AN AMBIENT, T, HIGHER THAN 50°C,  
THE MAXIMUM OPERATING  
CURRENT, I, IS AS FOLLOWS:

$$I_c I_0 = I_R \sqrt{\frac{100 - T}{50}}$$

### RELIABILITY SPECIFICATIONS

STORAGE TEMPERATURE: -40°C TO +85°C  
HUMIDITY: 21 DAYS @ 40°C AND 95% RH

### TEST SPECIFICATIONS

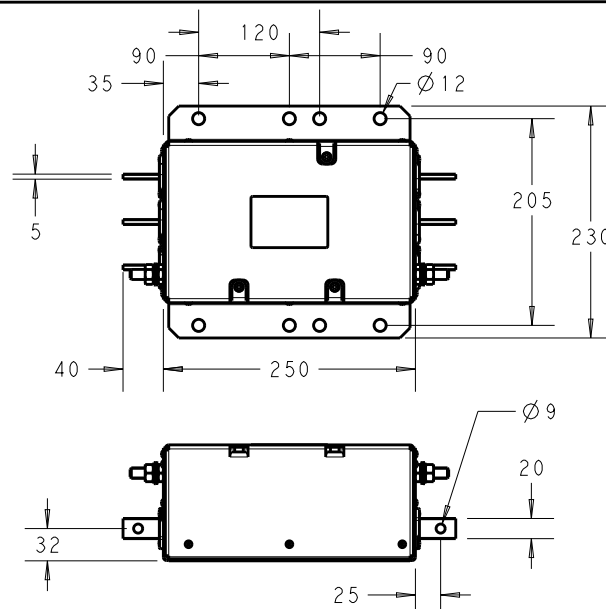
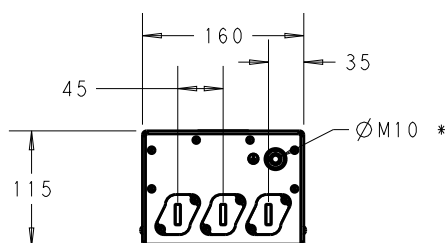
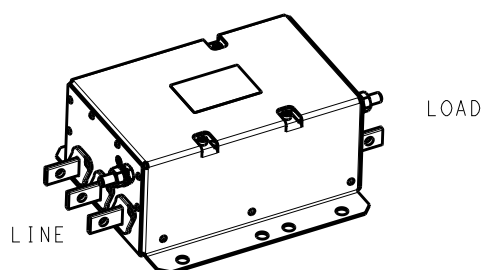
INDUCTANCE, NOMINAL: 64.1 µH  
CAPACITANCE @ 1 kHz, 0.25 VAC MAX., 25°C ±1°C:  
LINE TO GROUND, NOMINAL: 2.62 µF  
LINE TO LINE, NOMINAL: 12.3 µF  
DISCHARGE RESISTOR  
L/G AND L/L I.R. 666kΩ / 666kΩ  
IR (NO DISCHARGE RESISTOR) 20°C, 50% RH AND 100VDC, MIN: 6000 MΩ

### RECOMMENDED RECEIVING INSPECTION HIPOT

LINE TO GROUND FOR 1 MINUTE: 2200 VDC  
LINE TO LINE FOR 1 MINUTE: 2160 VDC

### FILTER APPROVAL:

THE BEST WAY TO SELECT AND QUALIFY  
A FILTER IS FOR YOUR ENGINEERING TO  
TEST THE UNIT IN YOUR EQUIPMENT.



\* DO NOT LOOSEN INNER GROUND NUTS.  
TORQUE OUTER GROUND NUTS TO:  
12-14 NM [110-120 IN-LB]

TYPICAL INSERTION LOSS  
COMMON MODE 50/50 Ω; DIFFERENTIAL MODE 100/100Ω

MHz	0.01	0.05	0.15	0.5	1.0	3.0	5.0	10	30
CM	12	23	66	77	63	79	80	53	29
DM	31	45	64	81	69	57	51	44	31


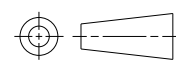
RELEASED FOR PUBLICATION

ALL RIGHTS RESERVED.

THIS DRAWING IS UNPUBLISHED.

BY -

COPYRIGHT -

DIMENSIONS:	DWN	16DEC2013	MATERIAL	FINISH		
mm	RS		-	-		
TOLERANCES UNLESS OTHERWISE SPECIFIED:	CHK	16DEC2013	 TE Connectivity			
	EC					
	APVD	16DEC2013				
	EC					
0 PLC ±2.0	PRODUCT SPEC		NAME 250APH12L 3-PHASE DELTA FILTER			
1 PLC ±1	8-1609148-2					
2 PLC ±0.5	APPLICATION SPEC					
3 PLC ±0.2			SIZE	CAGE CODE	DRAWING NO	RESTRICTED TO
4 PLC ±0.0001			A4	00779	C-8-1609148-2	-
ANGLES ±	WEIGHT	6.4 kg	Customer Drawing			
			SCALE	2:15	SHEET 1 OF 1	REV B