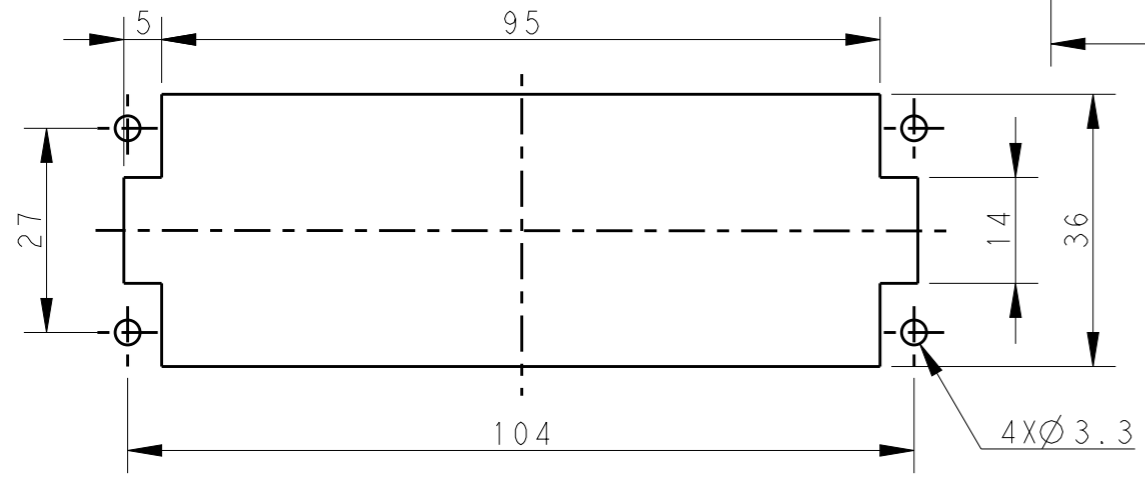
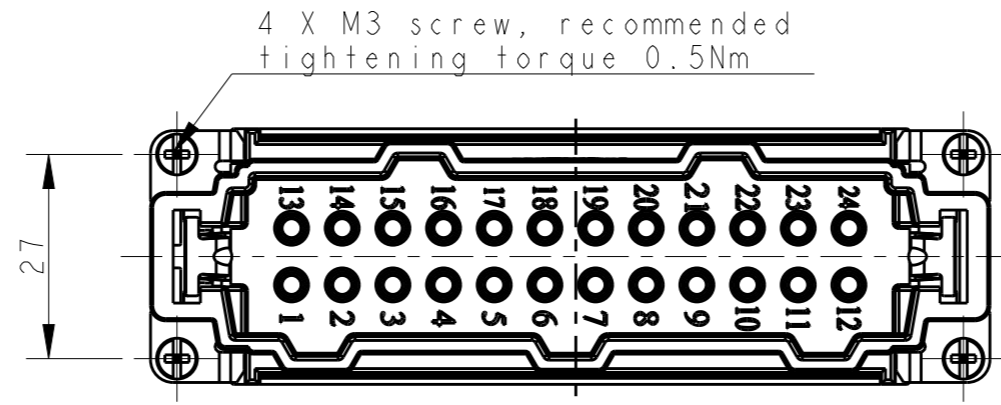
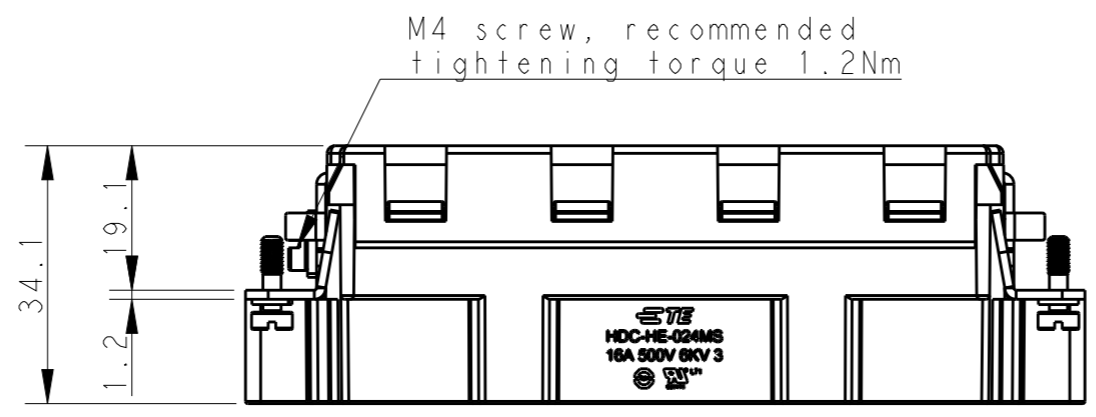
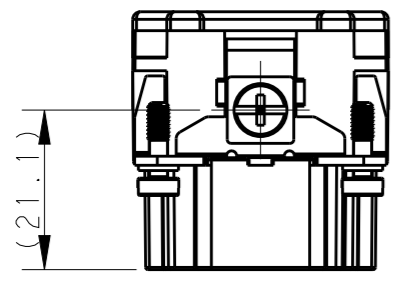
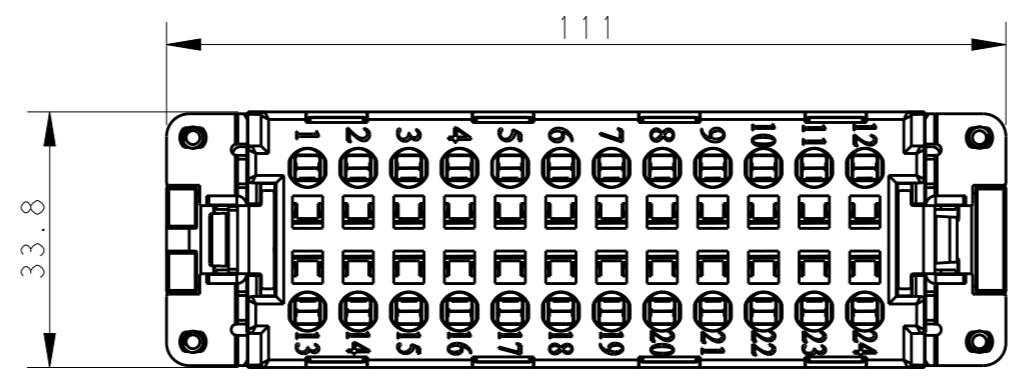
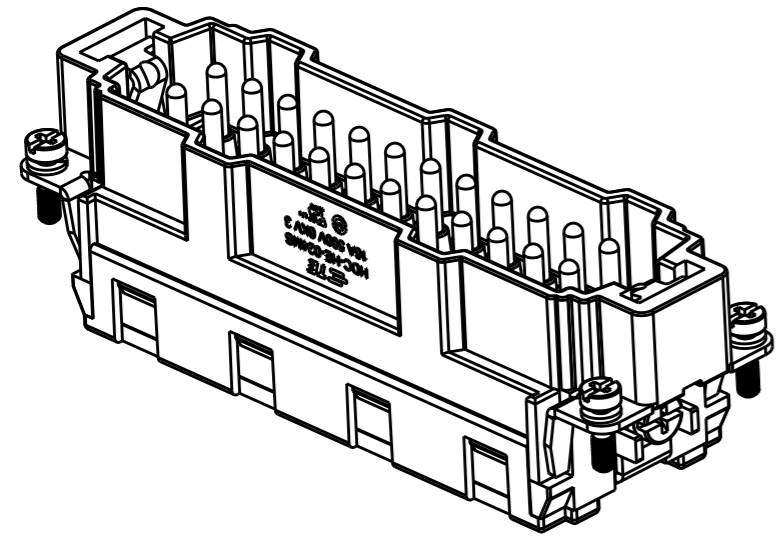


THIS DRAWING IS UNPUBLISHED. RELEASED FOR PUBLICATION 20
 © COPYRIGHT 20 BY - ALL RIGHTS RESERVED.

REVISIONS					
P	LTR	DESCRIPTION	DATE	DWN	APVD
A		INITIAL	05Jan2015	GY	CW
A1		ECR-15-004309	24Mar2015	GY	CW
B		ECR-15-013759	26Sep2015	DW	CW



Panel cut out for inserts for using without hoods/housings

M4 screw, recommended tightening torque 1.2Nm

4 X M3 screw, recommended tightening torque 0.5Nm


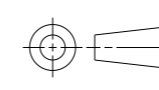
NOTES:

- TECHNICAL CHARACTERISTICS:
 - INSULATION MATERIAL: PC
 - RATED VOLTAGE: 500V
 - RATED CURRENT: 16A
 - INSULATION RESISTANCE: $\geq 400M\Omega$
 - RATED IMPULSE VOLTAGE: 6KV
 - POLLUTION DEGREE: 3
 - FLAMMABILITY: UL94V-0
 - MATING CYCLES: 500 CYCLES
 - OPERATION TEMPERATURE: $-40^{\circ}C \sim +125^{\circ}C$
 - WIRE RANGE: $0.5mm^2 \sim 2.5mm^2$ (AWG20-AWG14)
 - CONTACT TYPE: SPRING CLAMP

注释:

- 技术参数:
 - 绝缘材料: PC
 - 额定电压: 500V
 - 额定电流: 16A
 - 绝缘电阻: $\geq 400M\Omega$
 - 脉冲电压: 6KV
 - 污染等级: 3
 - 阻燃等级: UL94V-0
 - 插拔次数: 500 次
 - 工作温度: $-40^{\circ}C \sim +125^{\circ}C$
 - 接线范围: $0.5mm^2 \sim 2.5mm^2$ (AWG20-AWG14)
 - 接线类型: 弹片压接

HE-024-MS	T2040243101-000
DESCRIPTION	PART NUMBER

THIS DRAWING IS A CONTROLLED DOCUMENT.		DWN	Gino.Yao	18Aug2014	 TE Connectivity	NAME	HE-024-MS								
DIMENSIONS: mm		CHK	Chris.Wang	18Aug2014			PRODUCT SPEC	108-137044							
TOLERANCES UNLESS OTHERWISE SPECIFIED:		APVD	Xiang.Xu	18Aug2014				APPLICATION SPEC	114-137044						
0 PLC ±- 1 PLC ±- 2 PLC ±- 3 PLC ±- 4 PLC ANGLES ±-		MATERIAL	-	FINISH					-	WEIGHT	-	RESTRICTED TO	-		
DIMENSIONS: mm 		CUSTOMER DRAWING		SCALE	1:1	SIZE	A3	CAGE CODE	00779	DRAWING NO	T2040243101000	SHEET	1 OF 1	REV	B