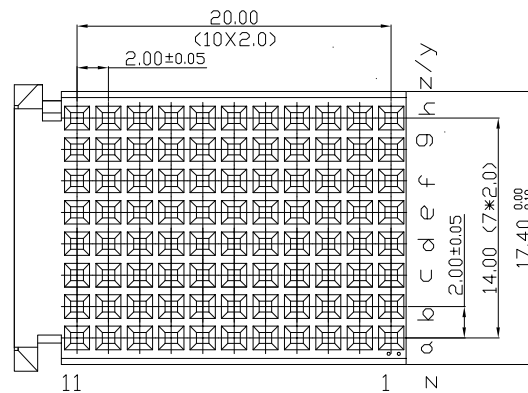
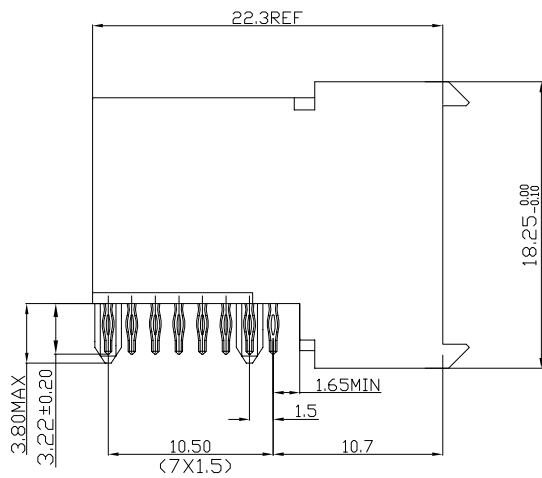


Tous droits strictement reserves. Reproduction ou communication a des tiers interdite sous quelque forme que ce soit sans autorisation ecrite du proprietaire. Propriete de c FCI. Droits de reproduction FCI.



All rights strictly reserved. Reproduction or issue to third parties in any form whatever is not permitted without written authority from the proprietor. Property of FCI. Copyright FCI.

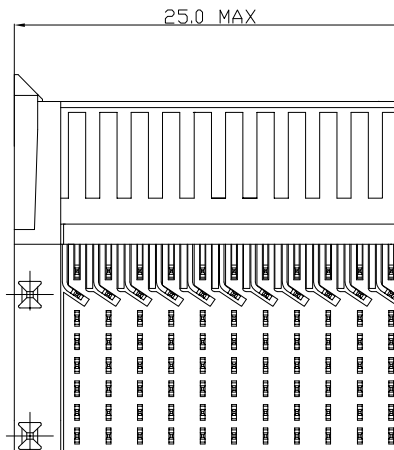
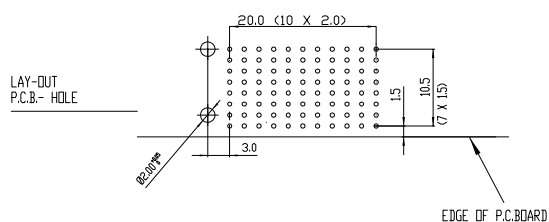


PERFORMANCE CHARACTERISTICS
 CURRENT RATING 1.5A AT 20°C (FULLY LOADED)
 1 A AT 70°C (FULLY LOADED)
 RATED VOLTAGE : 500 V AC (CONT /CONT)
 OPERATING TEMPERATURE : -55°C TO 125°C
 CONTACT RESISTANCE 20 MΩ MAX
 INSERTION FORCE : 0.75N MAX/CONT
 EXTRACTION FORCE : 0.15N MIN/CONT
 INSULATION RESISTANCE : 10⁴ MΩ MIN

NOTES
 1-HM2R89PA8100-PLATE FREE INDICATOR - LF-LEAD FREE (CIGIT 15146)
 PLATING CODE: CIGIT 15144

Plating code	Plating	Performance Level
AA	0,75um Au	EC performance level 2 (250mating cycles for TELCORDIA CO)
AB	7,25um Au	TELCORDIA UE

- THIS PRODUCT IS CSA APPROVED. THIS PRODUCT IS UL RECOGNIZED.
- FOR RECOMMENDED PTH DIMENSIONS REFER DRAWING : BS.A.201572.001
- THIS PRODUCT (LF) MEETS EUROPEAN UNION DIRECTIVES AND OTHER COUNTRY REGULATIONS AS DESCRIBED IN GS-22-008



rev	ecn no	dr	date
A	DG09-0243	NZ	Jul-20-2009
B	DG10-0093	NZ	Mar-08-2010
C	DG10-0110	NZ	Aug-08-2010

www.fciconnect.com		tolerance 1DEC ±0.2 1DEC 2DEC ±0.1 2DEC ANGLES ±1° HOEKEN	projection 	size A4	Scale SCALE
Dr	Nickor Zuo	Jul-20-09	Product family	MILLIPICS	ECN
Eng	Nickor Zuo	Jul-20-09	Spec ref		
Chr	PeiMing Zheng	Jul-20-09	Material		
Appr	Joseph Hsia	Jul-20-09			
title MPACS 8+2R RA RCP CONN TYPE F/NO SHIELDED				dwg no BSC201418058	Rev. C
catalog no HM2R89PA8100----				CUSTOMER	sheet 1 of 1