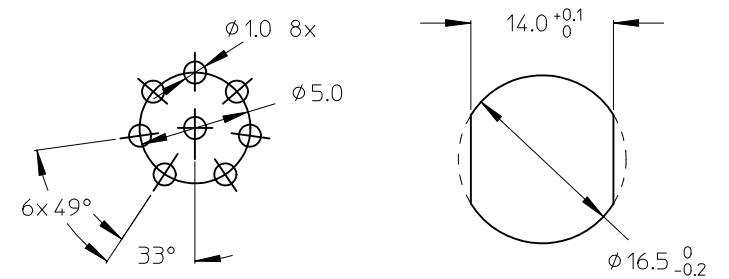
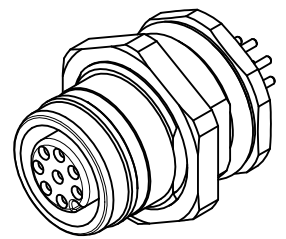


ITEM	COMPONENT	MATERIAL	FINISH
1	REC SHELL	BRASS	NICKEL PLATED
2	INSERT	PUR	BLACK
3	CONTACT	BRASS / GOLD	CuZn Ni/ Au
4	M16 NUT	BRASS	NICKEL PLATED
5	O-RING	NBR	BLACK
6	O-RING	VITON	RED
7	POTTING MATERIAL	EPOXY	NONE



POL MATERIAL NO. ENGINEERING NO.
 8 1200840033 WR8U40000

VOLTAGE RATING: 30 VAC / 36 VDC
 AMPERAGE RATING: 2 A
 PROTECTION CLASS: IP 67/68/69K
 OPERATING TEMPERATURE: -25°C / 90°C
 UL CERTIFICATION: FILE NO. E152210
 CSA CERTIFICATIONS: FILE NO. LR6837

ENTER DESCRIPTION EC NO: WEU2010-0298 DRW: NSTAUDIGEL 2010/01/26 CHKD: 2010/02/01 APPR: FPACHER 2010/02/02	QUALITY SYMBOLS	GENERAL TOLERANCES (UNLESS SPECIFIED)		DIMENSION STYLE	SCALE	DESIGN UNITS	THIRD ANGLE PROJECTION	
	▽=0 ◻=0	mm	INCH	MM ONLY	4:1	METRIC		
		4 PLACES ± --- ± ---	3 PLACES ± --- ± ---	DRAWN BY	DATE	TITLE		
		2 PLACES ± 0.05 ± ---	1 PLACE ± 0.1 ± ---	NSTAUDIGEL	2010/01/26	M12U REC 8-P FEMALE BACK SHIELDED M16X1.5		
	ANGULAR ± ---°	DRAFT WHERE APPLICABLE MUST REMAIN WITHIN DIMENSIONS		CHECKED BY	DATE	MOLEX INCORPORATED		
				APPROVED BY	DATE	DOCUMENT NO.		
				FPACHER	2010/02/01	SD-120084-017		
				MATERIAL NO.		SHEET NO.		
				SIZE	THIS DRAWING CONTAINS INFORMATION THAT IS PROPRIETARY TO MOLEX INCORPORATED AND SHOULD NOT BE USED WITHOUT WRITTEN PERMISSION			
				A3	1 OF 1			