

Data Sheet

LL12ZZ-CRC45145L19



■ Features & Typical Applications

- High efficiency
- Optimized Uniformity
- Roadway Lighting
- Anti-glare

■ Table of Contents

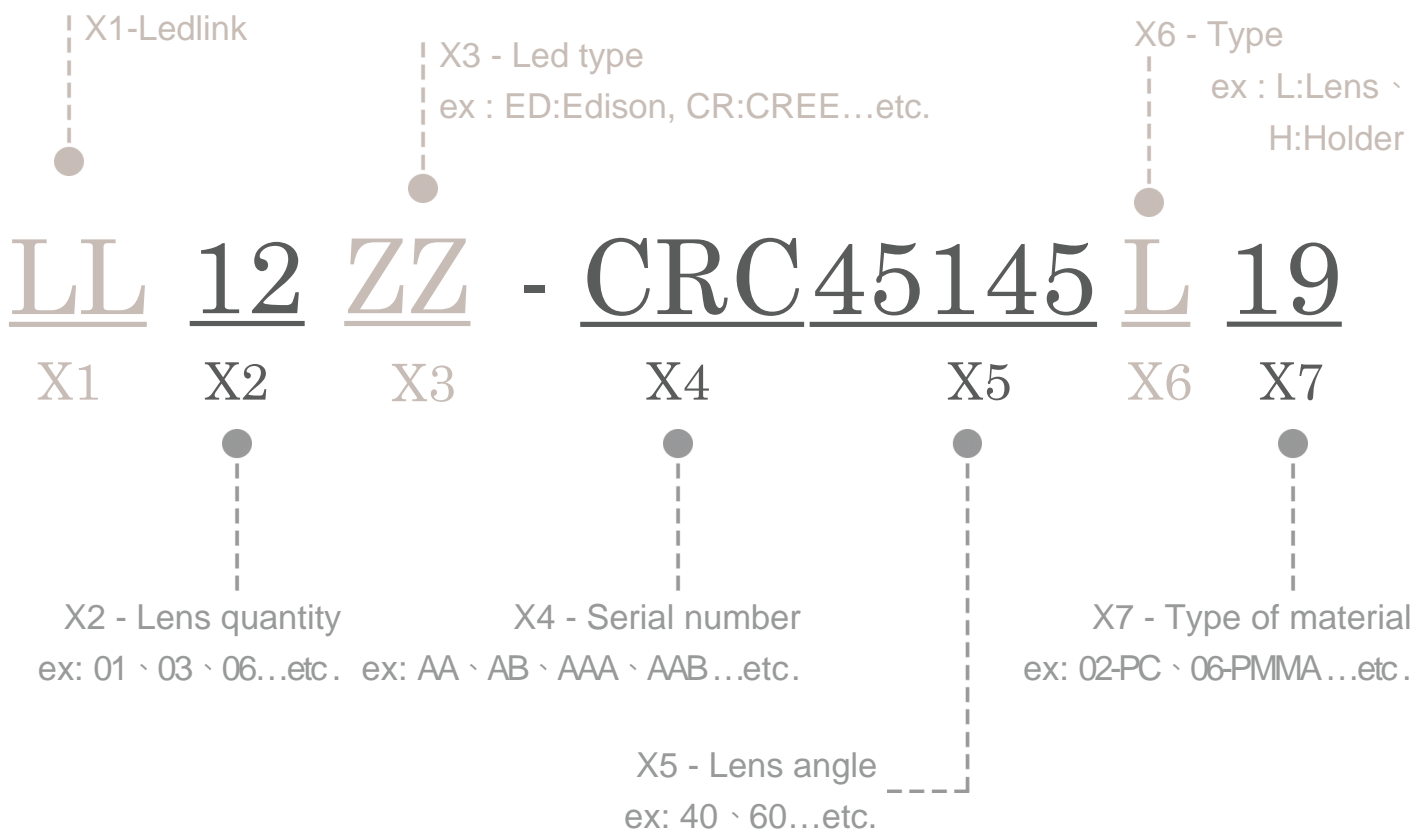
General Information & Product Nomenclature.....	P.2
Optical Specifications	P.3
Mechanical Specifications	P.4
Package Specifications	P.5

LL12ZZ-CRC45145L19

General Information

- Lens Material :PC 1250Z
- Operating Temperature range -40°C~+110°C(upper limit +120°C).
- Storage Temperature range -40°C~+110°C(upper limit +120°C).
 - * Average transmittance in visible spectrum 400nm~700nm>90%.
- Usage and Maintenance:
 1. If necessary, clean lenses with mild soap, water and soft cloth.
 2. Never use any commercial cleaning solvents on lenses, like alcohol.
 3. Please handle or install lenses with wearing gloves, skin oils may damage lens or its optical characteristic.

Product Nomenclature



LL12ZZ-CRC45145L19 Optical Specifications

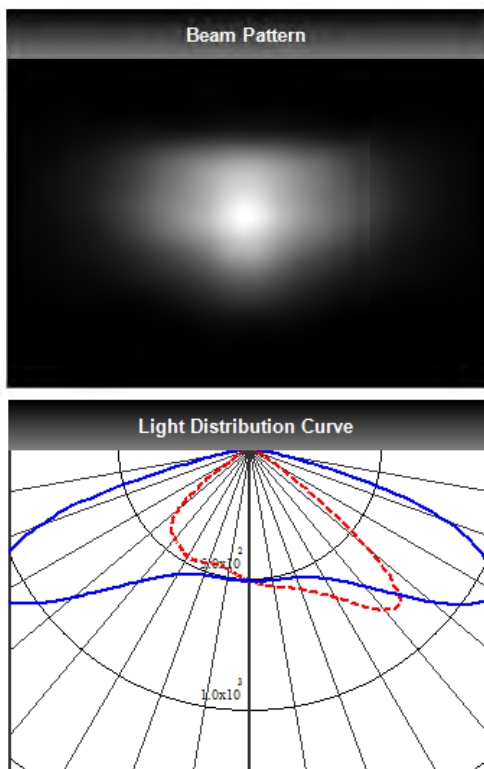


3030

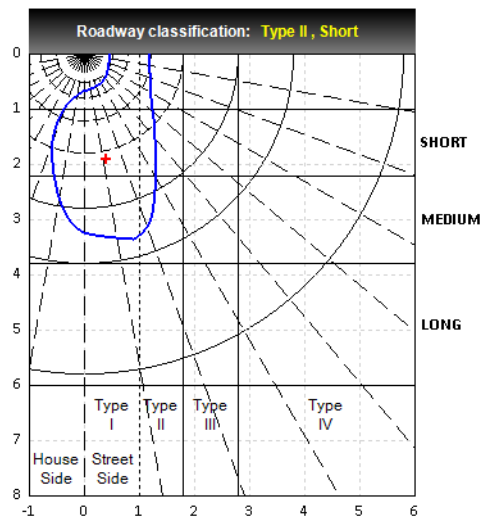
Note: (1) All the results of analysis are based on 0 degrees of elevation.
(2) Tolerance: $\pm 10\%$.
(3) Led Luminous Flux(lm): 2880($\pm 5\%$).

IES File: [Download](#)

@elevation 0°



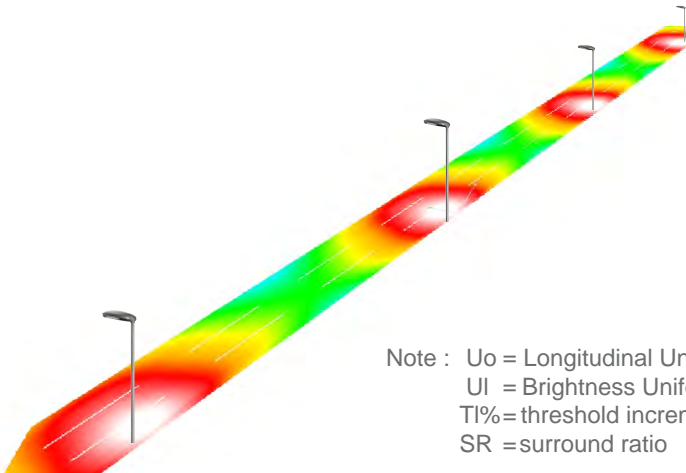
--- C0:0-180 — C1:90-270



Elevation	Roadway Classification
0°	Type II , Short
5°	Type II , Short
10°	Type III , Short
15°	Type III , Short
20°	Type IV , Medium

DIALux Simulation Result

Analyzed file: [Download](#)



Note : U_o = Longitudinal Uniformity
U_i = Brightness Uniformity
TI% = threshold increment
SR = surround ratio

Recommend configuration condition	
Height	= 10m
Distance	= 40m
Roadwidth	= 10m
Elevation	= 0 degree
Overhang	= 1.0m
Result	
E _{min} / E _{max}	= 0.32
E _{min} / E _{avg}	= 0.55
U _i	= 0.73
U _o	= 0.67
TI	= 8%
SR	= 0.64

*The results would be similar if the configuration conditions are equally magnified or minified.

*This testing result is obtained through testing the popular rank LED samples which provided by the original manufacturer. Hence, the testing results would be varied as the users choose same LED model but different rank.

*The analyzed file require DIALux v4.12 and above to open.

3

LL12ZZ-CRC45145L19

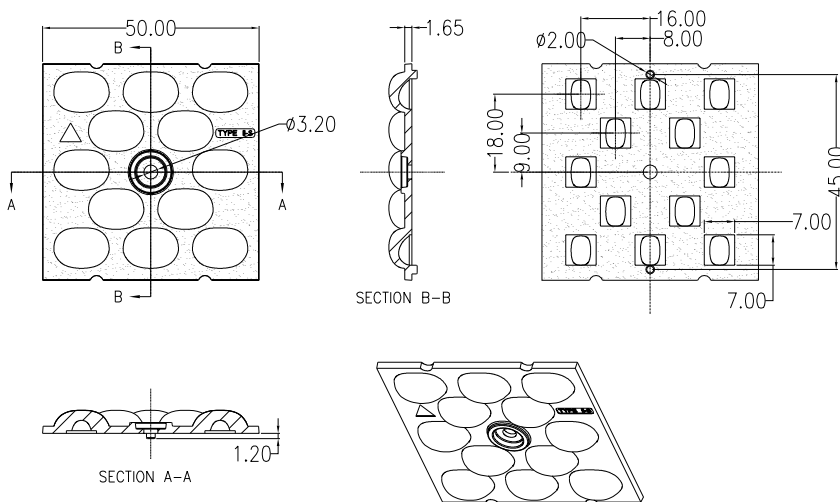
Mechanical Specification

1. Fixing method

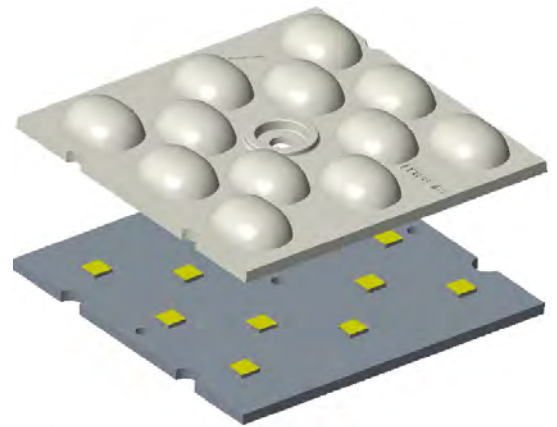
Glue
 Screw
 Tape
 Fixing-ring
 Frame

Note: (1) All dimensions are in mm.
 (2) All measurements are ± 0.15 mm unless otherwise indicated.

2. Lens dimension

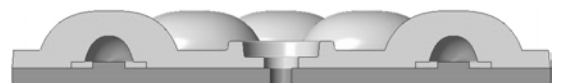


3. Assembly instruction



4. Assembly dimension

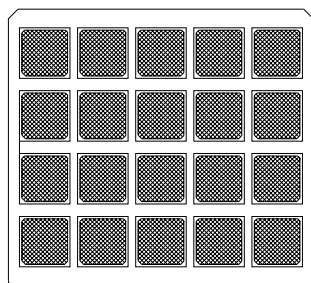
5. View assembly lens with MCPCB:



LL12ZZ-CRC45145L19

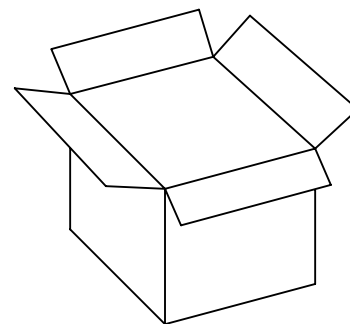
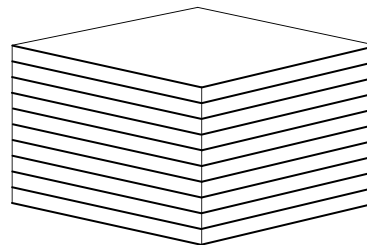
Package Specifications

Item	Quantity	Total	Size(L*W*H)	G.W
plastic box	20 pcs/plastic box	20 pcs	32*29*1.4 cm	6.4 g
outer box	16 plastic box/outer box	320 pcs	35*31*21 cm	



YZ-0144

20 pcs/plastic box



320 pcs/outer box



Note: