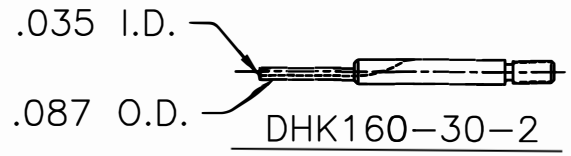
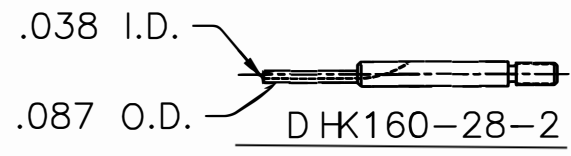
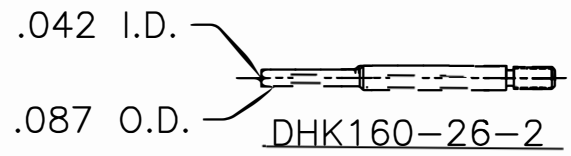
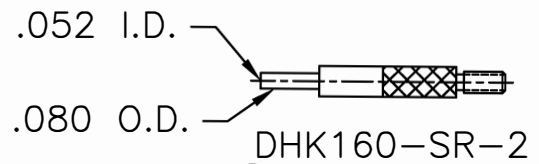
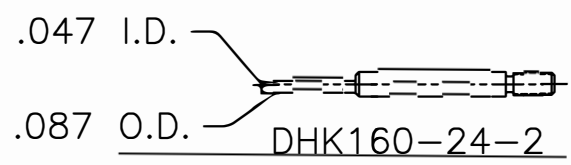
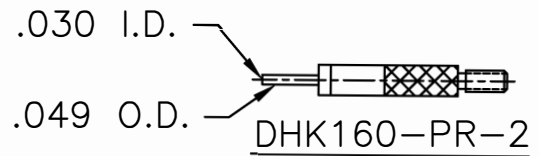
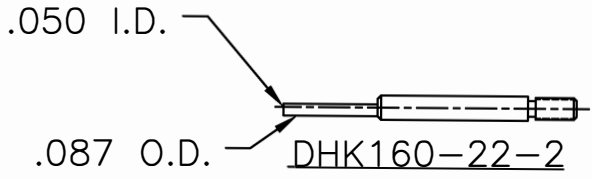


REVISIONS				
REV. SYM.	E.C.O. NUMBER	DESCRIPTION	BY DATE	APP'D DATE
1		ORIGINAL RELEASE	JWJ 2/22/07	RRR 2/22/07

**UNCONTROLLED DOCUMENT
WILL NOT BE UPDATED**




RESTRICTED & CONFIDENTIAL

CONFIDENTIAL PROPERTY OF DANIELS MANUFACTURING CORP. NOT TO BE DISCLOSED TO OTHERS, REPRODUCED OR USED FOR ANY OTHER PURPOSE, EXCEPT AS AUTHORIZED IN WRITING BY DANIELS MANUFACTURING. MUST BE RETURNED TO DANIELS MANUFACTURING CORP. ON COMPLETION OF ORDER OR OTHER PURPOSE FOR WHICH LENT.

MATERIAL

HEAT TREAT

FINISH

ITEM	PART NO.	QTY.	DESCRIPTION/REMARKS
DRN.	J. JOYCE	DATE 2/22/07	 DANIELS MANUFACTURING CORP. ORLANDO, FLORIDA CAGE 11851
CHK'D.	RRR	DATE 2/22/07	
APP'D.		DATE	
APP'D.		DATE	
NOTE:			TITLE
THIS DRAWING IS AN OUTLINE DRAWING OF THE RESPECTIVE DMC PART NUMBER INDICATED. ACTUAL DMC PART NUMBER IS DRAWING NUMBER WITHOUT THE "-ENV" SUFFIX.			INSTALLING/REMOVAL TOOL KIT ENVELOPE DRAWING
WHERE USED:			
SIZE	SCALE	CAD P/N	SHEET OF
A	NTS	DHK159-ENV	1 1
POSTING	DWG. NO.	REV.	
	DHK159-ENV	1	

DO NOT SCALE DRAWING