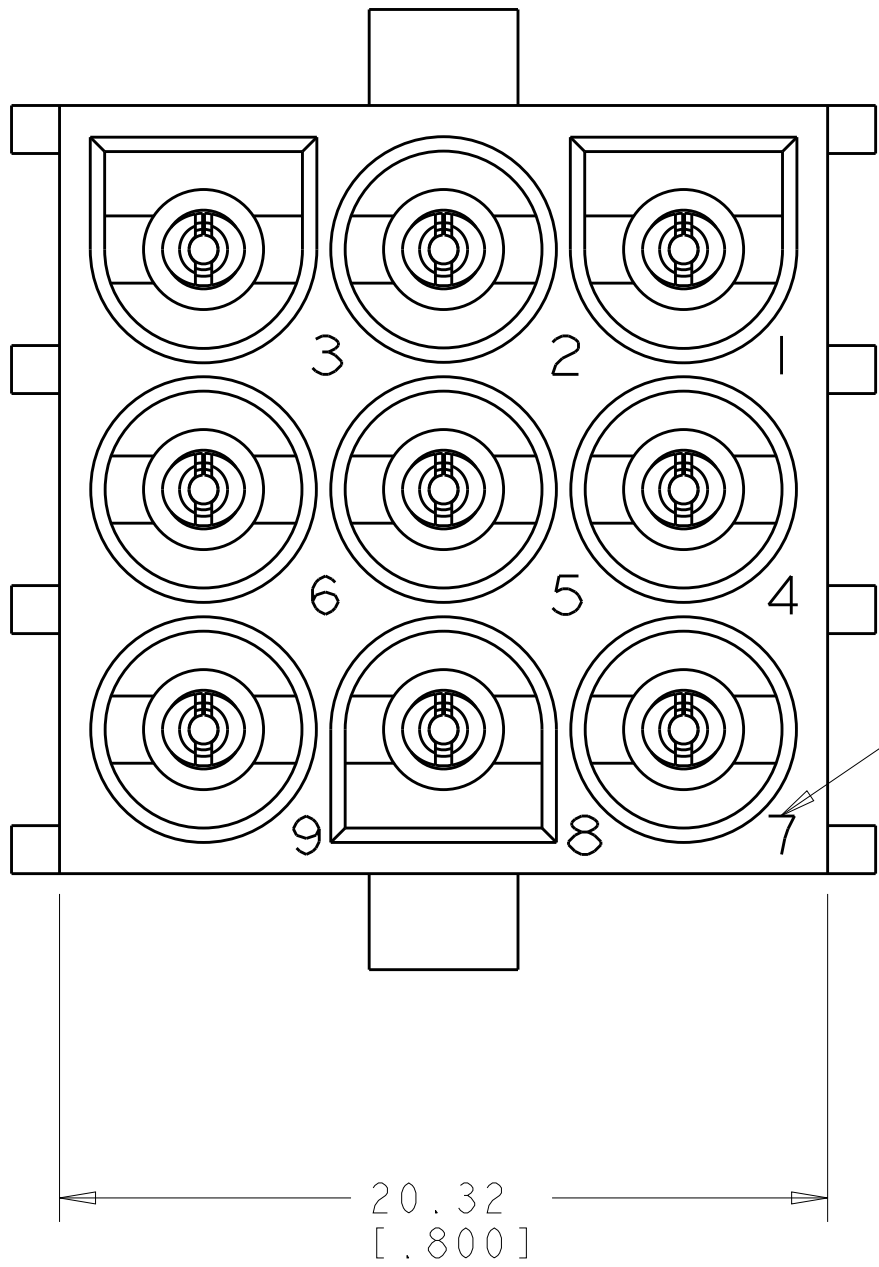
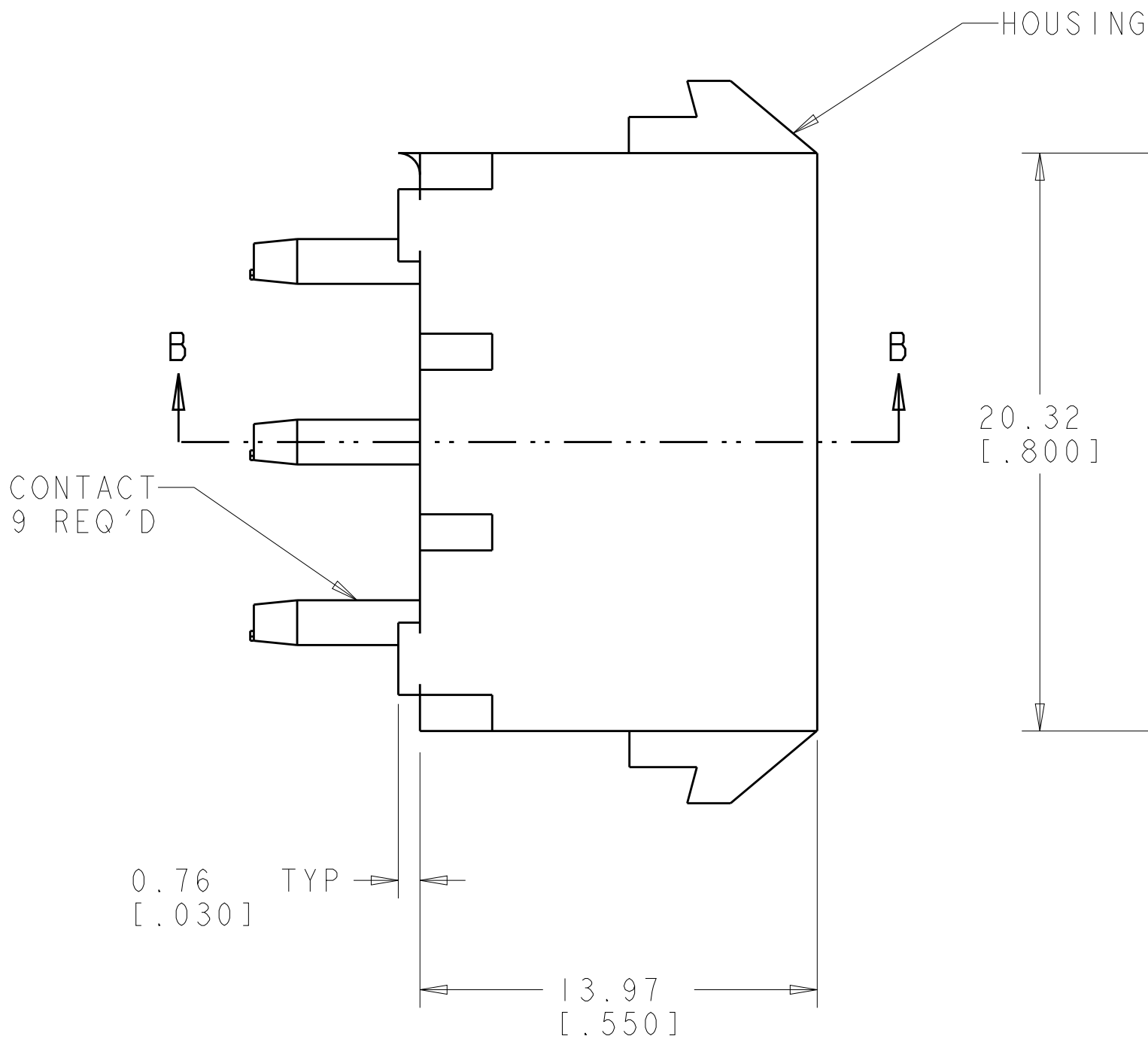
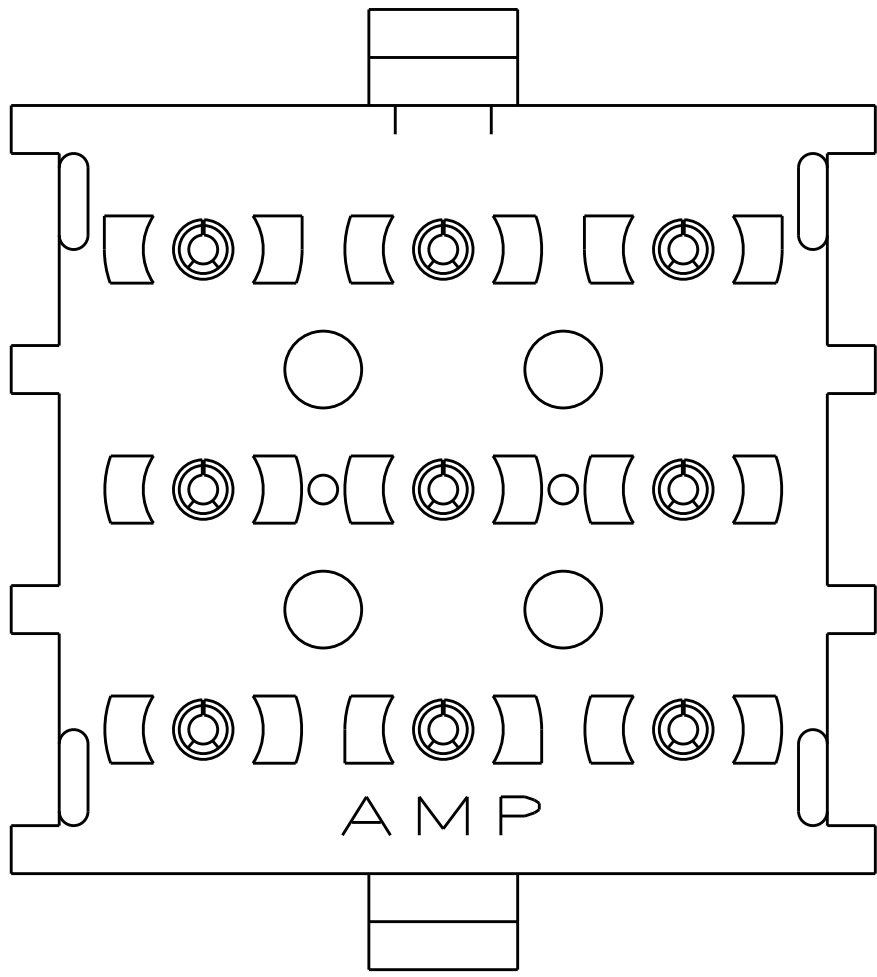


LOC		DIST		REVISIONS				
CM		P	LTR	DESCRIPTION	DATE	DWN	APVD	
			P1	REVISED PER ECR-12-011660	04FEB2013	KH	TM	



1. PARTS COMPLY TO AMP SOLDERABILITY SPECIFICATION 109-11-3.

2. CONTACT IS PLATED OVERALL WITH 0.00127 [.000050] NICKEL, THEN 0.00076 [.000030] GOLD OVER CONTACT LENGTH INDICATED AND TIN LEAD ON SOLDER TAIL END.

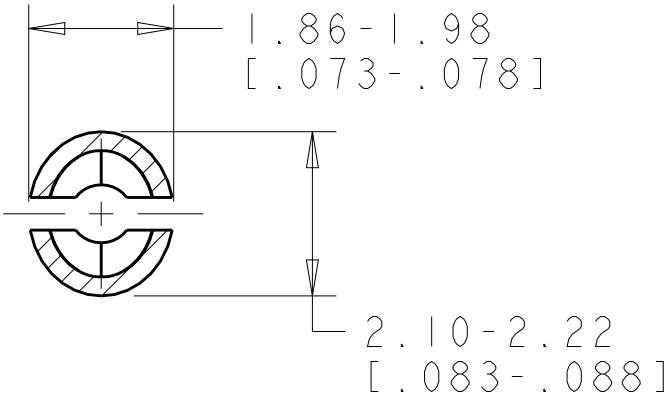
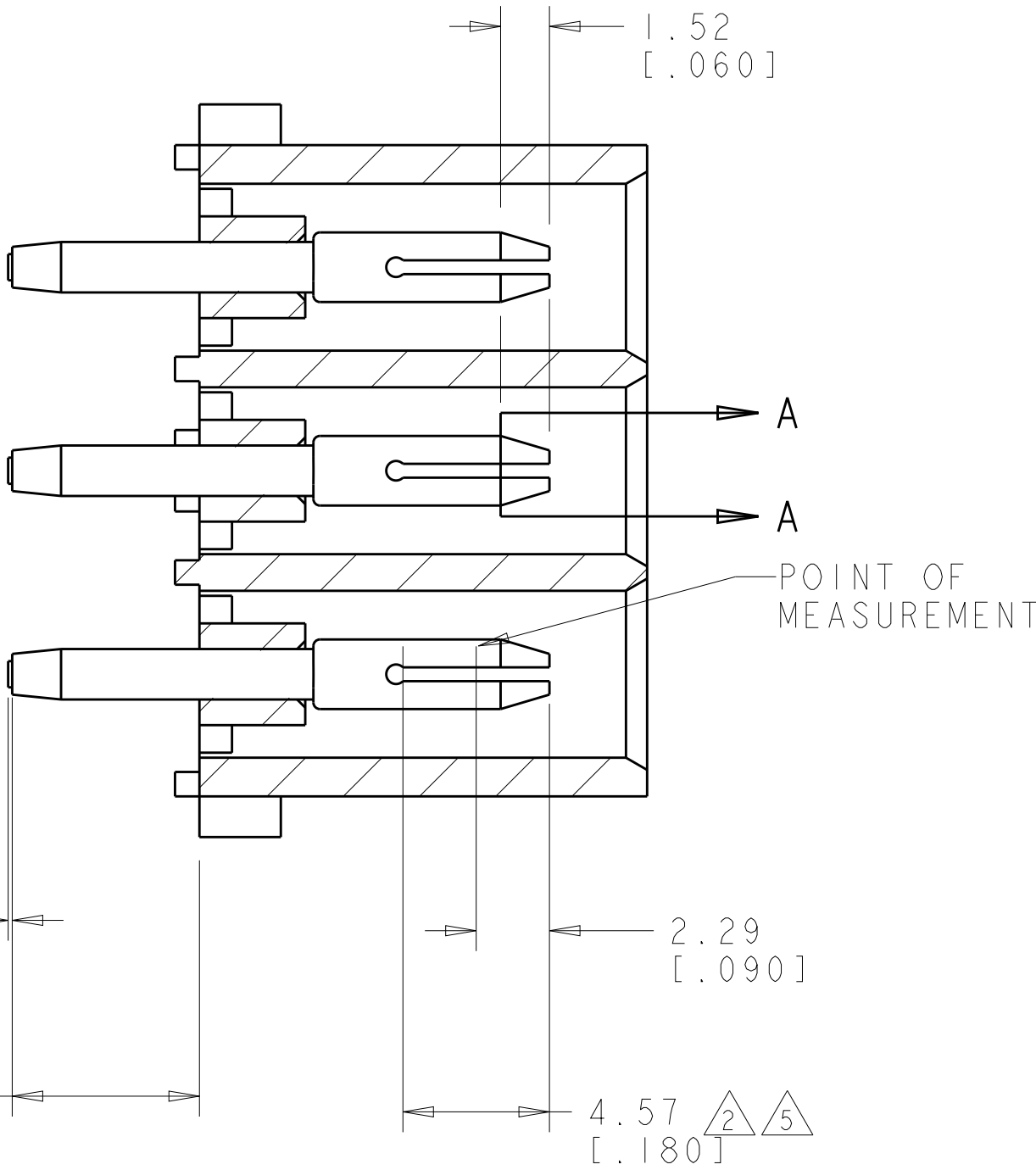
3. MATES WITH HOUSING 350720.

4. CIRCUIT IDENTIFICATION CHARACTERS ARE ADJACENT TO THE INDICATED CAVITIES, BUT LOCATION AND ORIENTATION MAY DIFFER FROM PRINT.

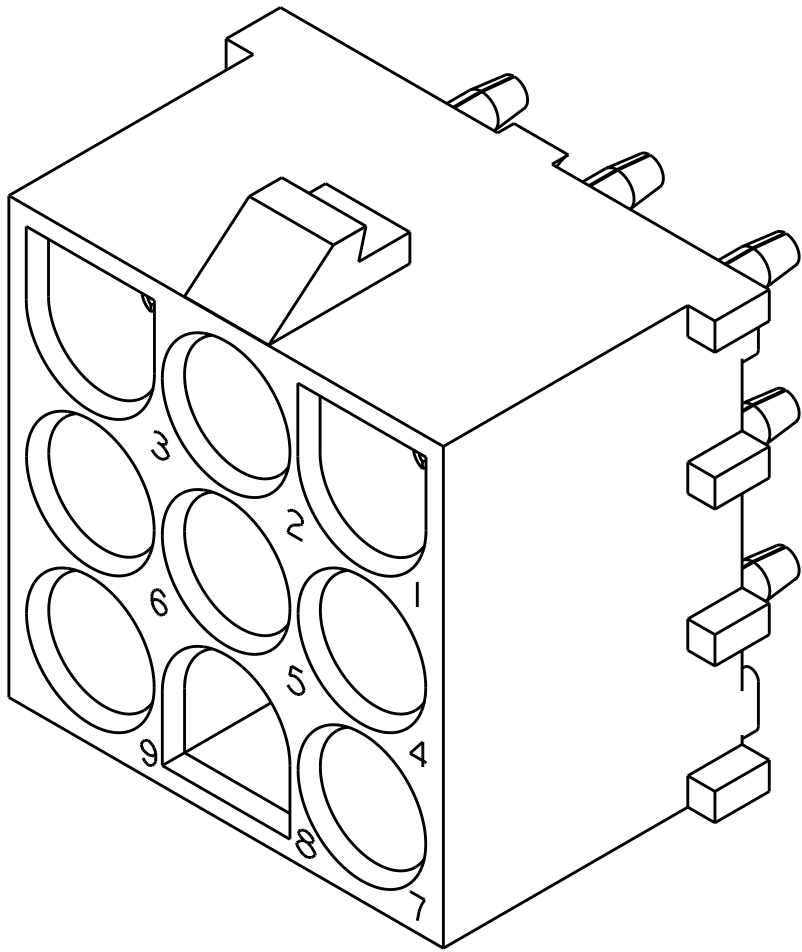
5. CONTACT IS PLATED OVERALL WITH 0.00127 [.000050] NICKEL, THEN 0.00076 [.000030] GOLD OVER CONTACT LENGTH INDICATED AND MATTE TIN ON SOLDER TAIL END.

6. DIMENSIONS IN BRACKETS ARE IN INCHES.

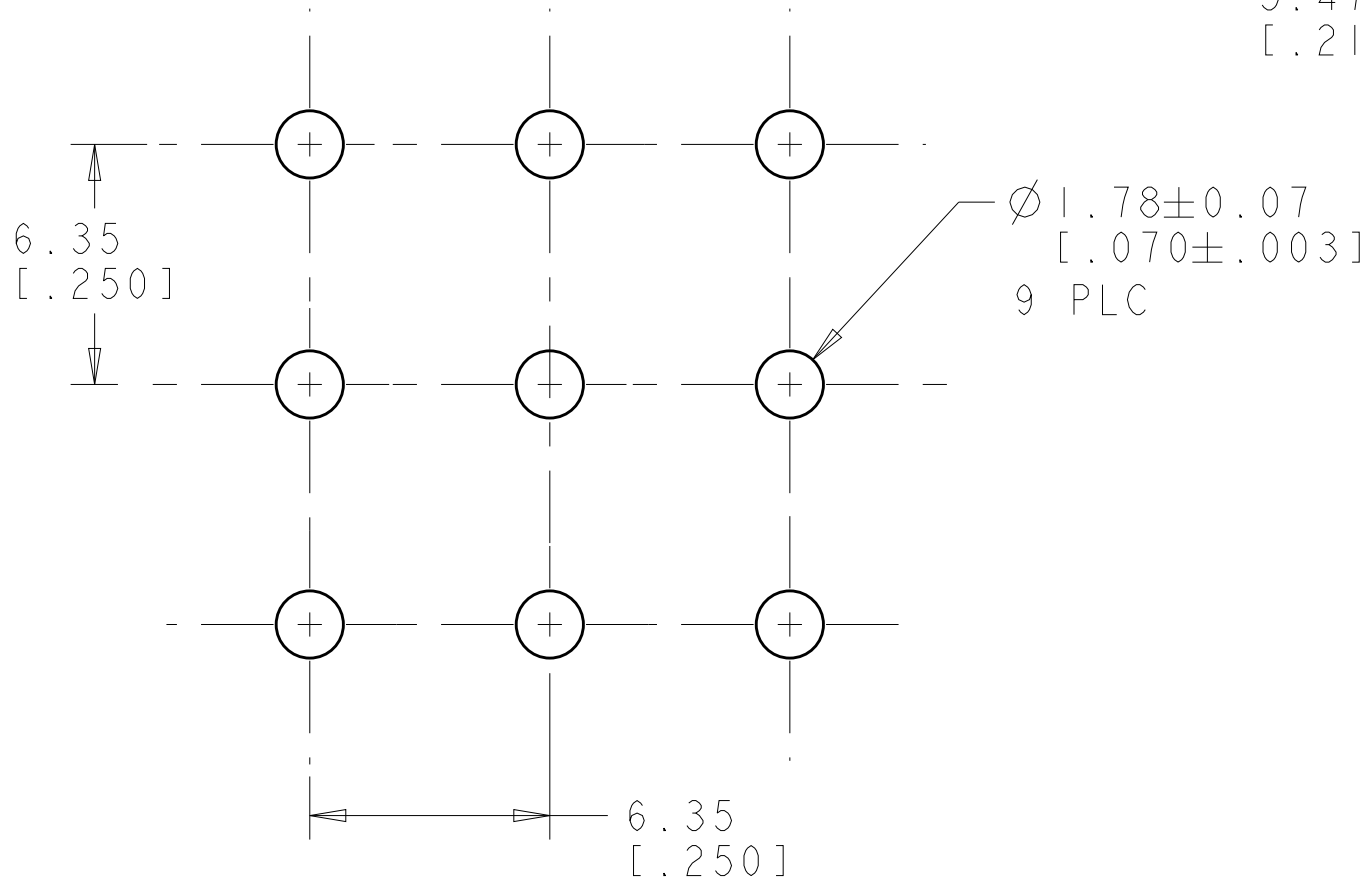
7. SUPERSEDED BY 350742-4



SECTION A-A
SCALE 10:1



3 DIMENSIONAL MODEL
SCALE 4:1



SECTION B-B

PHOSPOR BRONZE, GOLD 5	NYLON, UL94V-0,NATURAL	350742-4
PHOSPOR BRONZE, GOLD 2	NYLON, UL94V-0,NATURAL	350742-2
PHOSPOR BRONZE, PRE-TIN	NYLON, UL94V-0,NATURAL	350742-1
PIN CONTACT MATERIAL AND FINISH	HOUSING MATERIAL AND COLOR	PART NUMBER

THIS DRAWING IS A CONTROLLED DOCUMENT.		DWN K. WHITAKER CHK S. RIDGILL APVD S. RIDGILL	05OCT2005 05OCT2005 05OCT2005
DIMENSIONS: mm[INCHES]	TOLERANCES UNLESS OTHERWISE SPECIFIED:	PRODUCT SPEC	NAME
	0 PLC ± 1 PLC ± 2 PLC ±0.13(.005) 3 PLC ± 4 PLC ± ANGLES ±0°30'	APPLICATION SPEC	SIZE
MATERIAL SEE TABLE	FINISH SEE TABLE	WEIGHT	CAGE CODE
CUSTOMER DRAWING		SCALE 1:1	SHEET 1 OF 1

TE TE Connectivity

PIN HEADER ASSEMBLY,
9 CIRCUIT, LONG TAIL,
UNIVERSAL MATE-N-LOK(TM)

A100779C=350742

REV P1