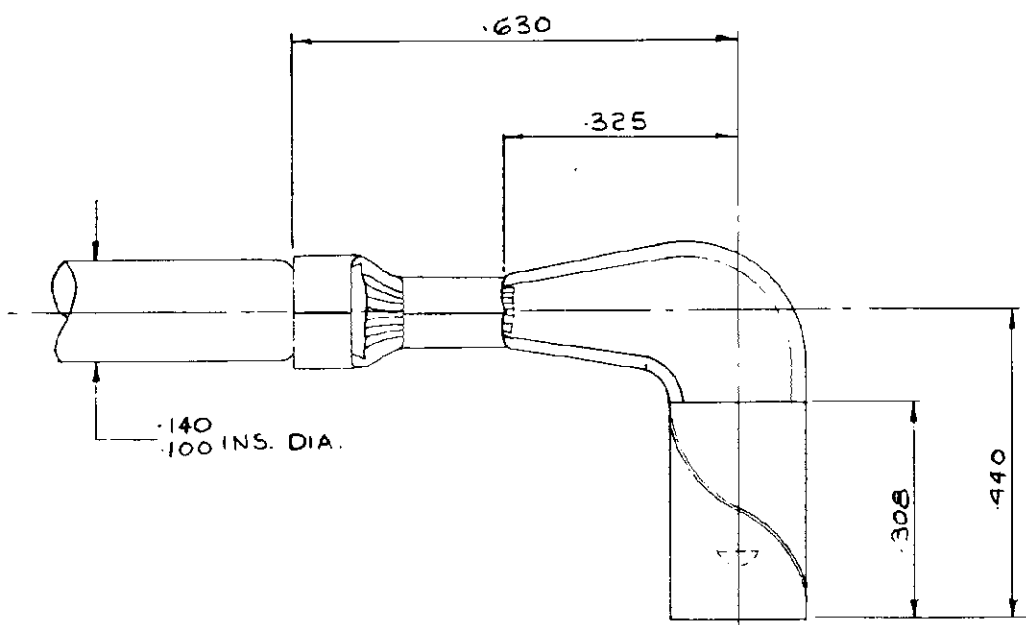


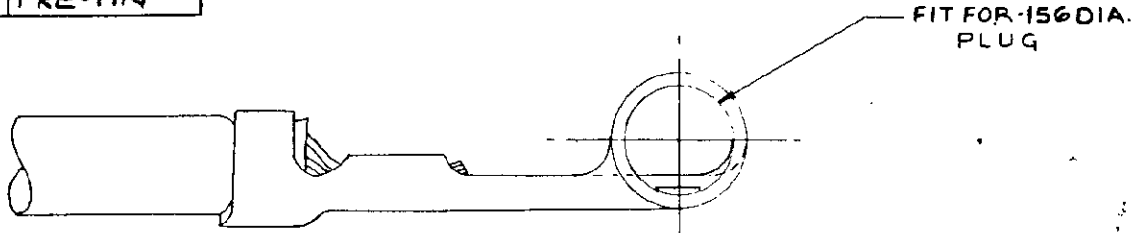
NUMBER C-150656

C AIRCRAFT-MARINE PRODUCTS (G.B.) LTD. 1963

1 OBSOLETE PARTS: OBSOLETE CIS STREAMLINING PER D.RENAUD/D.SINISI



1-150656-2	REVERSE REELED PRE-TIN	OBSOLETE	1
150656-2	PRE-TIN		



CUSTOMER COPY
FOR REFERENCE ONLY

1-150656-1	REVERSE REELED
150656-1	NONE
PART No	FINISH.

DIMENSIONS IN INCHES DO NOT SCALE PRINT

MATERIAL 020 PHOS. BRONZE		HEAT TREAT ~	COATING OR PLATING ~
UNLESS OTHERWISE SPECIFIED REMOVE BURRS. BREAK SHARP EDGES 1/64 R. MAX FRACTIONS ± 1/64 DECIMALS .000 = ± .005 ANGLES: ± 0° 30' .0000 = ± .0005			
FIRST USED	WIRE RANGE 20-16	CLASS WT-R	TYPE AUTOMATIC
P.P.P.	AREA	AIRCRAFT-MARINE PRODUCTS (GREAT BRITAIN) LTD. LONDON, E.C.1.	
DR. J. Seagrave	20.6.63	LOC	SCALE 4:1
CHK. [Signature]	20.6.63	No	REV
APP		A C-150656 C1	
REL		NAME WIRE TERMINAL SHUR PLUG RECEPTACLE	

C1	REV PER ECO-10-000444	KK	08 JAN 10
C	-2 # 1-2 ADDED.	AEG	20.06.63
D	1-1 ADDED.	DR	20.11.63
A	208 and 3/0	APP	30.12.63
LTR	REVISION RECORD	REL	
ECA		DATE	