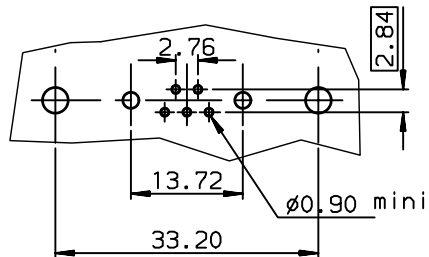


LAYOUT DIMENSIONS (after plating)  
CONNECTOR SIDE VIEW



TIN LEAD PART NUMBER

DAI7W2P343G30	M 3
DAV7W2P343G30	UNC 4.40
DAI7W2P343G40	M 3
DAV7W2P343G40	UNC 4.40
DAI7W2P343H30	M 3
DAV7W2P343H30	UNC 4.40
DAI7W2P343H40	M 3
DAV7W2P343H40	UNC 4.40
PART NUMBER	Threaded A

LEAD FREE PART NUMBER

DAI7W2P343G30LF	M 3
DAV7W2P343G30LF	UNC 4.40
DAI7W2P343G40LF	M 3
DAV7W2P343G40LF	UNC 4.40
DAI7W2P343H30LF	M 3
DAV7W2P343H30LF	UNC 4.40
DAI7W2P343H40LF	M 3
DAV7W2P343H40LF	UNC 4.40
PART NUMBER	Threaded A

GENERAL CHARACTERISTICS AND ROHS INFORMATIONS:  
SEE DRAWING C01-8639-0000

European Views

www.fciconnect.com		surface ISO 1302	tolerance std ISO 406 ISO 1101	projection mm	size A3	Scale 1.5
		TOLERANCES UNLESS OTHERWISE SPECIFIED				
Dr	JOUBERT	2000/11/27	ANGULAR	0.X	±0.1	
Eng	PESSON	2000/11/27	LINEAR	0.XX	±0.1	
Chr	LEGARE	2000/11/27	0.XX' ±2'	0.XXX	±0.1	ECN LS06-0095
Appr	LEGARE	2000/11/27	Product family	D-SUB		Spec ref -
FCI		PIN CONNECTOR WITH TWO POWERS CONTACTS			dwg no C01-8639-1756	Rev. D
catalog no		-			CUSTOMER	sheet 1 of 1

rev	ecn no	dr	date
B	-	DEB	2003/09/29
C	LS05-001	MPE	2005/03/09
D	LS06-0095	LGO	2006/06/27
-	-	-	-
-	-	-	-
-	-	-	-