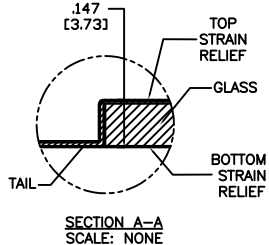
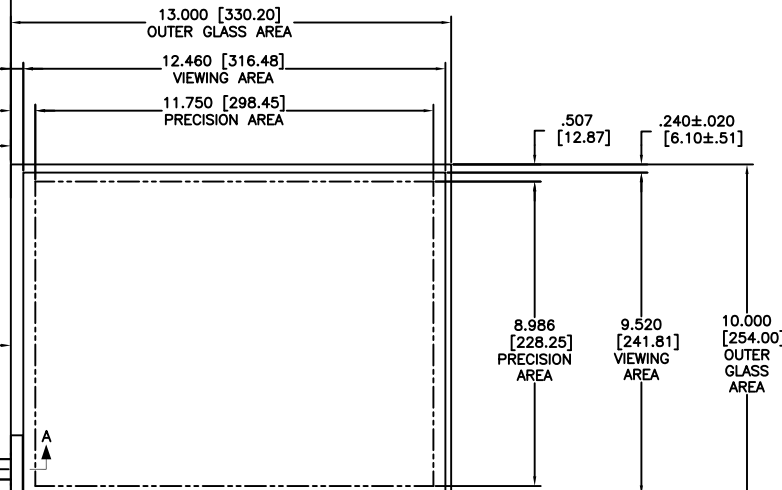
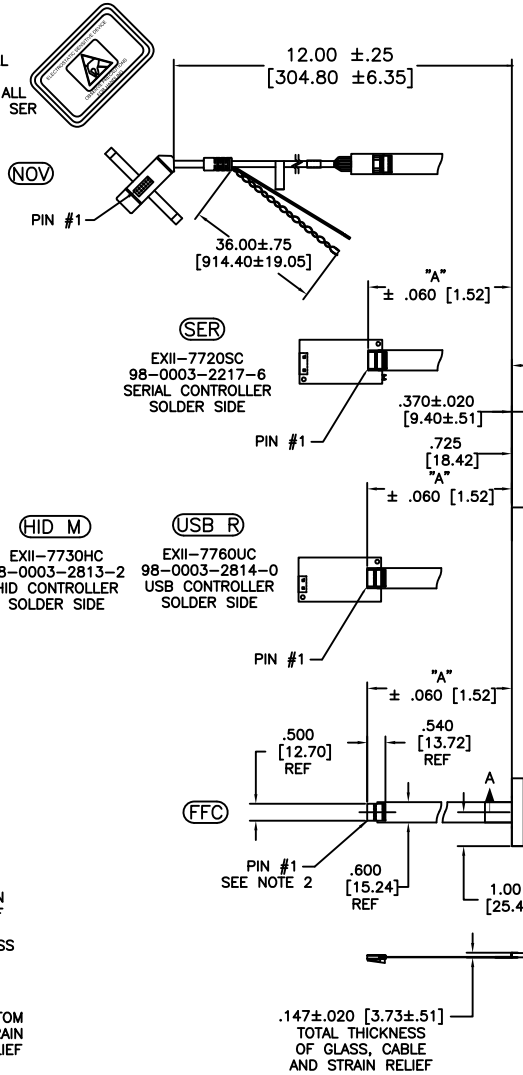


OGA DIAGONAL: 16.40 [416.59]  
 VA DIAGONAL: 15.68 [398.29]  
 PA DIAGONAL: 14.79 [375.72]

| TOP LEVEL NUMBER | SKU 98 NUMBER  | TYPE  | DIM "A" (TOTAL GLASS TO CONNECTOR) | A/G FINISH | PROD SPEC |
|------------------|----------------|-------|------------------------------------|------------|-----------|
| 17-8031-203      | 98-0003-2511-2 | FFC   | 4.27" [108.46]                     | AG500      | 23655     |
| 17-8031-204      | 98-0003-2513-8 | FFC   | 6.00" [152.40]                     | AG500      | 23655     |
| 17-8031-205      | 98-0003-2514-6 | FFC   | 8.00" [203.20]                     | AG500      | 23655     |
| 17-8031-206      | 98-0003-2515-3 | NOV   | SEE DWG                            | AG500      | 23655     |
| 17-8031-221      | 98-0003-2521-1 | SER   | 4.27" [108.46]                     | AG500      | 23655     |
| 17-8031-223      | 98-0003-2522-9 | SER   | 6.00" [152.40]                     | AG500      | 23655     |
| 17-8031-227      | 98-0003-2525-2 | SER   | 8.00" [203.20]                     | AG500      | 23655     |
| 17-8031-218      | 98-0003-2519-5 | USB R | 4.27" [108.46]                     | AG500      | 23655     |
| 17-8031-226      | 98-0003-2919-7 | USB R | 8.00" [203.20]                     | AG500      | 23655     |
| 17-8031-230      | 98-0003-2921-3 | HID M | 8.00" [203.20]                     | AG500      | 23655     |

ESD CLAMSHELL CASE IS USED WITH ALL NOV, USB AND SER TERMINATIONS.



- NOTES:
- WEIGHT OF GLASS IN GRAMS: 639 ±10%
  - 5 PIN AMP CONNECTOR LATCH STYLE HOUSING P/N: 487526-4 TIN CONTACTS P/N: 2-487406-4 HOUSING ORIENTED WITH LATCH DOWN

| PINOUT |      |
|--------|------|
| 1      | LR   |
| 2      | LL   |
| 3      | SHLD |
| 4      | UL   |
| 5      | UR   |

UNITS: INCHES [MM]

TOLERANCES UNLESS OTHERWISE SPECIFIED:  
 .X ±  
 .XX ±.03 [.76]  
 .XXX ±.015 [.38]  
 ANGLES ±1°

THIRD ANGLE PROJECTION

DO NOT SCALE DRAWING

SCALE: 1 = 1

**3M** 3M TOUCH SYSTEMS METHUEN, MA USA

© COPYRIGHT 2005 THIS DOCUMENT IS COPYRIGHTED PROPERTY OF THE 3M COMPANY AND MAY NOT BE REPRODUCED WITHOUT 3M WRITTEN PERMISSION OR USED OR DISCLOSED FOR OTHER THAN 3M AUTHORIZED PURPOSES.

DRAWN: K. CROWLEY 9/05

| REV | CHANGE NOTICE         | DATE | DRW |
|-----|-----------------------|------|-----|
| 05  | REVISED PER CO 030743 | 7/09 | SB  |
| 04  | REVISED PER CO 028873 | 5/08 | SEB |
| 03  | REVISED PER CO 028687 | 2/08 | ACM |

TITLE: MARKETING DRAWING SCT32NN 15.68"

CAD FORMAT: AUTOCAD SHEET: 1 OF 1

SIZE: C DOCUMENT NO: 28138-MKT REV: 05