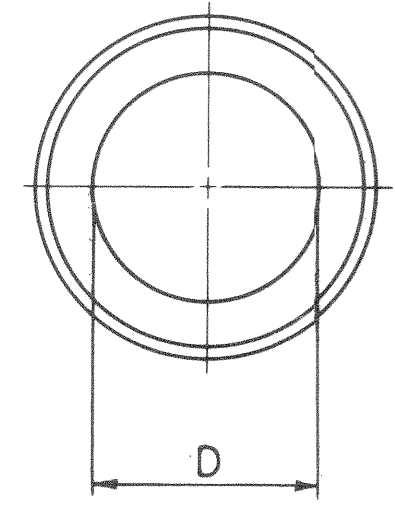
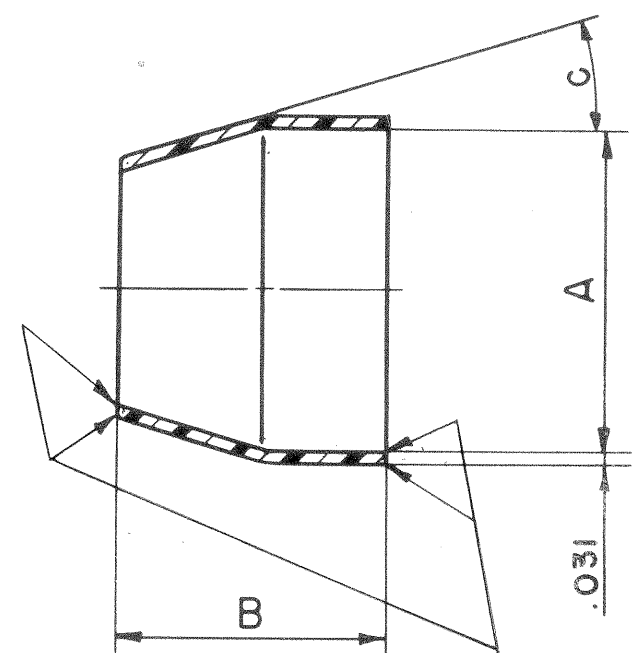


| PART NUMBER | A DIA | B | C | D DIA | WT-LB | COMMENT | RELEASE |
|-------------|---|------|-----|-------|-------|---------|-----------|
| 10-36298-8 | .516 ^{+0.000} / _{-0.010} | .63 | 22° | .288 | .0010 | 22387-6 | 30508-227 |
| -10 | .609 | ↓ | | .359 | .0011 | | |
| -12 | .766 | ↓ | | .484 | .0016 | | |
| -13 | .766 | .851 | | .484 | | | |
| -14 | .844 | .633 | | .609 | .0020 | | |
| -15 | .844 | .851 | | .609 | .0027 | | |
| -16 | .969 | .633 | | .734 | .0020 | | |
| -17 | .969 | .851 | | .734 | .0023 | | |
| -18 | 1.094 ↓ | ↓ | | .859 | .0040 | | |
| -20 | 1.219 ^{+0.000} / _{-0.015} | ↓ | | .984 | .0047 | | |
| -22 | 1.344 | ↓ | | 1.109 | .0051 | | |
| -24 | 1.469 | .788 | | 1.234 | .0052 | | |
| -28 | 1.719 ↓ | .788 | ↓ | 1.427 | .0063 | | |
| -32 | 2.000 ^{+0.000} / _{-0.020} | .726 | 34° | 1.708 | .0070 | | |
| -36 | 2.219 | ↓ | | 1.895 | .0066 | | |
| -40 | 2.469 | ↓ | | 2.130 | | | |
| -44 | 2.782 ↓ | ↓ | | 2.400 | | | |

10-36298

| REL. | 30508-227 | WAS | DATE | D'MAN | APPD. |
|------|-----------|---|---------|-----------|--------------------|
| 1 | 31018-1 | ADD: NOTE "FLASH PERMISSIBLE .015 MAX." | 5-16-55 | I. NILES | <i>[Signature]</i> |
| 2 | 30525-314 | REV COL A | 9-16-55 | JONES | <i>[Signature]</i> |
| 3 | 31662-2 | ADD D DIA FOR -10, RELOC C DIM, REV COL C | 1-17-56 | FGEORGE | <i>[Signature]</i> |
| 4 | 33199-1 | REV COL C | 6-24-57 | MUGGLIN | <i>[Signature]</i> |
| 5 | 35525-881 | ADD -44 AND DATA | 8-31-59 | FAIRCHILD | <i>[Signature]</i> |
| A | 49525-85 | (MFG); ADD. WT LB COL | 11-8-69 | Randall | <i>[Signature]</i> |



FLASH PERMISSIBLE
.015 MAX.

USE OF THIS DOCUMENT IS UNLIMITED. DOCUMENTS REFERENCED HEREON CONTAIN LIMITED RIGHTS DATA.

- NOTES:
- PARTS TO BE TRANSPARENT TO TRANSLUCENT.
 - E. I. DUPONT DE NEMOURS & CO, INC ZYTEL 101.
 - ENGINEERING SOURCE APPROVAL REQUIRED.

| | | | | | | | |
|--|---------------|---|--|--|--|---|--|
| MATERIAL SPEC. NYLON SEE NOTE 2 | PROCESS SPEC. | SCINTILLA MAGNETO DIVISION BENDIX AVIATION CORPORATION SIDNEY, N. Y., U.S.A. | | | | TOLERANCES UNLESS OTHERWISE SPECIFIED | |
| HEAT TREAT SPEC. | FINISH SPEC. | NAME END BELL, POTTING, ELECTRICAL CONNECTOR | | | | DECIMALS ± .010 CONCENTRICITY .015 FIR | |
| | | NEXT ASSEMBLY 10-87217 THRU 10-87232 10-87201 THRU 10-87216 | | | | WEIGHT - LBS SEE WT COL | |
| | | SUPERSEDES AND IS NOT INTERCHANGEABLE | | | | SUPERSEDED BY | |
| | | TOOL ACC | | | | REF | |
| | | COM. REC 22387-6 | | | | 10-36298 | |
| | | D'MAN CHERMAK | | | | SCALE NO SCALE | |
| | | CHECKER T. Lyons | | | | DATE 9-16-54 | |
| | | MAT EP | | | | SCALE NO SCALE | |
| | | ST'DS Bibean | | | | DATE 2-25-55 | |
| | | CH D'MAN Reed | | | | DATE 2-25-55 | |
| | | APPROVED <i>[Signature]</i> | | | | SCALE NO SCALE | |