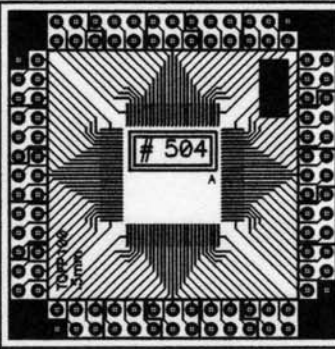
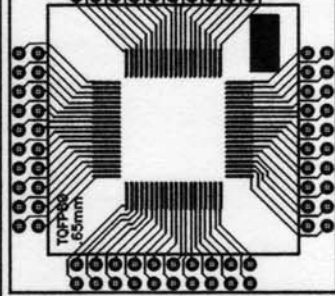
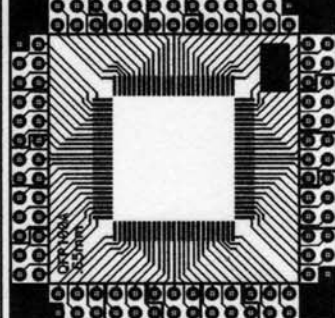
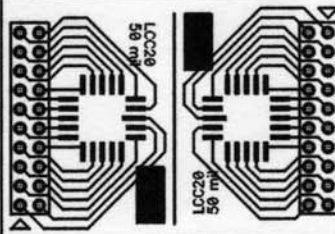
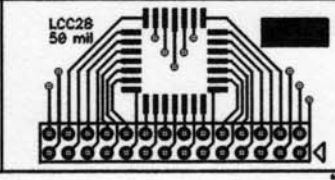
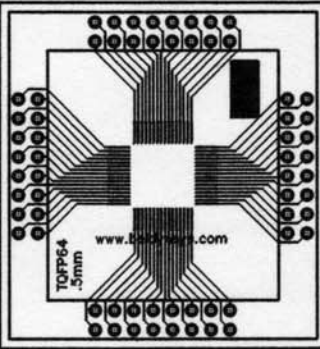
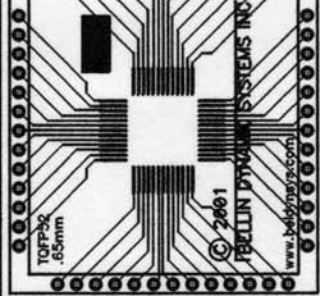
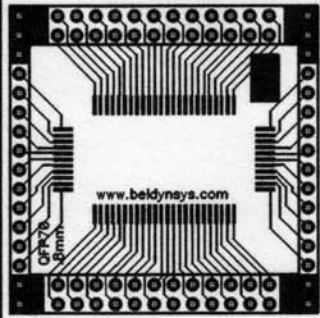
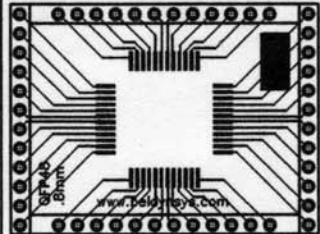
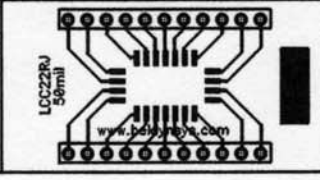
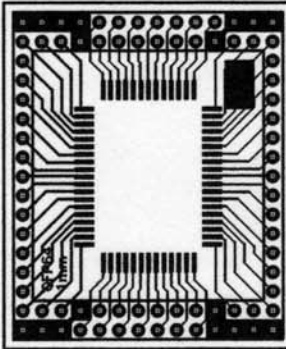
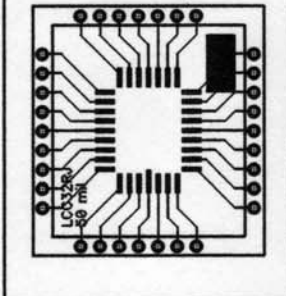
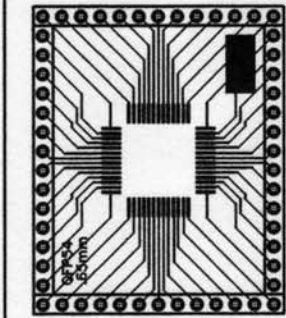
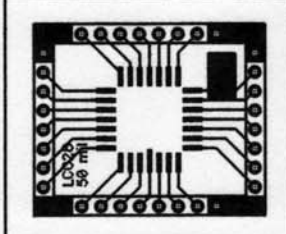
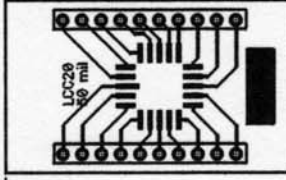


front side board thickness 0.031" all 0.070" pads have 0.050" plated through holes on 0.100" grid
 print 1:1 to fit check components lines between adapters grooved for easy snap-apart by hand

5.000"



0.000"

7.600"

Bellin Dynamic Systems Inc 211 S State College #319, Anaheim California 92806	
Tolerances:	Title
.XX = +/- .03"	Size
.XXX = +/- .010"	A
Drawn: P Bellin	Part #: 504
Check: P Bellin	Doc #: 20154B.PCB
	Board, Quad SMT
	Part Rev: A
	Sheet 1 Of 1

