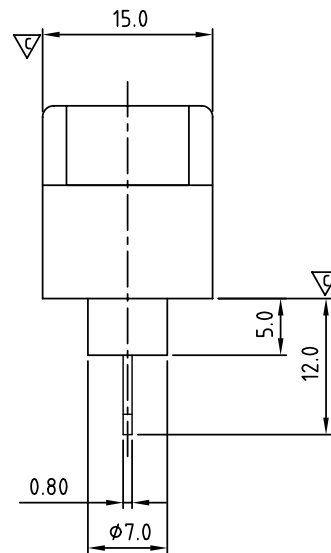
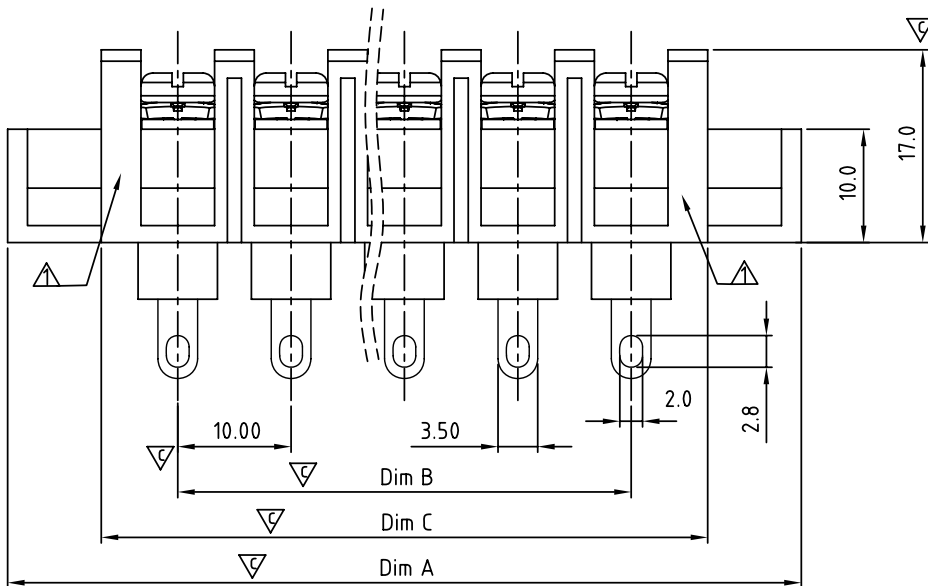


N=Number of poles
Dimension A&B

| | |
|-------|-----------------------|
| Dim A | $(N+2) \times 10.0$ |
| Dim B | $(N-1) \times 10.0$ |
| Dim C | $N \times 10.0 + 3.5$ |

| Poles | Tolerance |
|---------|------------|
| 4p-10p | ± 0.40 |
| 11p-20p | ± 0.60 |
| 21p-30p | ± 0.80 |



| SIGN | DATE | DESCRIPTION | APPROVER |
|------|----------|-------------------------------------------------------------------------------------------|----------|
| △ | 3/30'09 | Structure changed | JODY |
| △ | 3/30'09 | Temperature changed from $-40 \sim 105^{\circ}\text{C}$ to $-40 \sim 115^{\circ}\text{C}$ | JODY |
| △ | 11/17'12 | Change the screw plating specification | Jacky |
| △ | 11/17'12 | Change the dimensional tolerance | Jacky |

THIS IS CAD DRAWING, DO NOT REVISE MANUALLY!!!

MATERIALS ELECTRICAL
RATED VOLTAGE & CURRENT: 300 V, 20 A
WITHSTAND VOLTAGE: AC 2000 V/Min
INSULATION RESISTANCE: 1000 MΩ OR MORE AT DC 500 V
OPERATING TEMPERATURE RANG: △ $-40^{\circ}\text{C} \sim +115^{\circ}\text{C}$
SCREW TORQUE VALUE: 12 Lb-In.
WIRE RANGE: 22 - 12 AWG
1) MOLDED PARTS: POLYIMIDE 66, UL 94 V-0 BLACK
2) TERMINAL: BRASS, 0.8t, Tin PLATED
3) TERMINAL SCREWS: STEEL, M3.5

APPROVAL:
 Critical dimension: ▽

PART NO.:

YK 606 xx 3 x x 00G

NO. OF POLES
 04: 4 POLES
 05: 5 POLES
 06: 6 POLES
 ...
 30: 30 POLES

G:RoHS compliant(lead=4%)
 in copper alloy

MARK
 0: "@" MARK
 1: "ANY" MARK

TERMINAL & SCREW PLATED
 0: TERMINAL & SCREW: G/F
 △ 1: TERMINAL: G/F, SCREW: Zinc
 2: TERMINAL: Sn, SCREW: G/F
 △ 3: TERMINAL: Sn, SCREW: Zinc

ANYTEK

CUSTOMER COPY

ALL RIGHTS RESERVED. REPRODUCTION OR ISSUE TO THIRD PARTIES IN ANY FORM WHATSOEVER IS NOT PERMITTED WITHOUT WRITTEN AUTHORITY FROM THE PROPRIETOR. PROPERTY OF ANYTEK TECHNOLOGY CO., LTD

| | | | | | | |
|----------|---------|------------------------------------------------|-------------------|--------------|--|-------------|
| TITLE | | YK-606 With Flange&Without Cover Series(4-30P) | | | | |
| PART NO. | | YK606xx3xx00G | | DWG NO. | | 8YK0003-606 |
| APPROVED | CHECKED | DESIGNED | DRAWN | CUST NO. | | Tolerance |
| | | Jacky 11/17 12 | Jacky 11/17 12 | | | X. ±0.50 |
| | | | | UNIT: mm | | X.X ±0.30 |
| | | | | SCALE: NONE | | X.XX ±0.10 |
| | | | | SHEET: 01/01 | | X° ±1° |
| | | | | REV.: D | | |