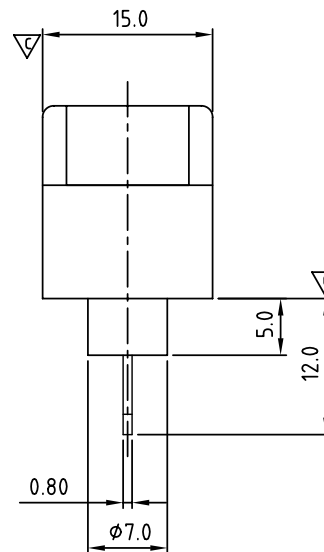
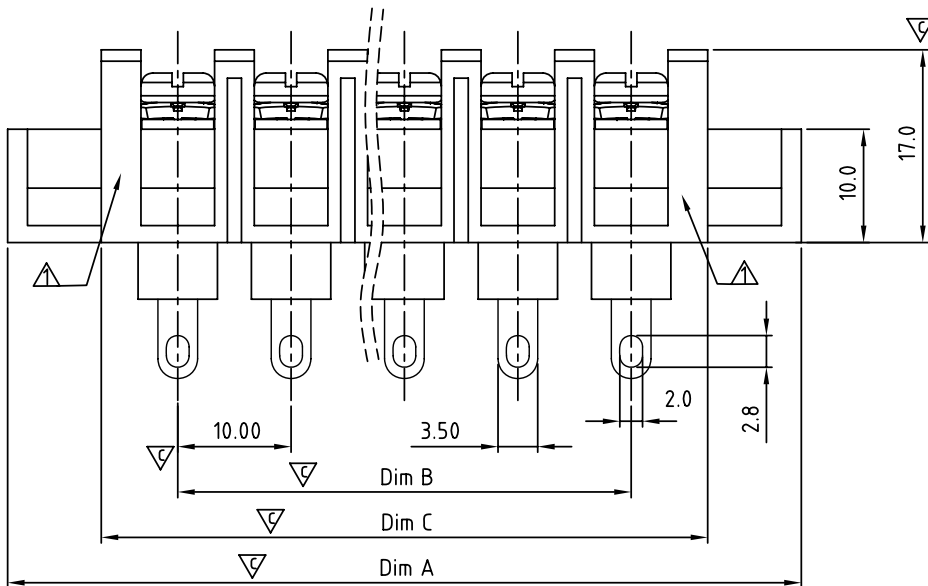




N=Number of poles  
Dimension A&B

|       |            |
|-------|------------|
| Dim A | (N+2)×10.0 |
| Dim B | (N-1)×10.0 |
| Dim C | N×10.0+3.5 |

| Poles   | Tolerance |
|---------|-----------|
| 4p-10p  | ±0.40     |
| 11p-20p | ±0.60     |
| 21p-30p | ±0.80     |



| SIGN | DATE     | DESCRIPTION                                     | APPROVER |
|------|----------|---|----------|
| △    | 3/30'09  | Structure changed                               | JODY     |
| △    | 3/30'09  | Temperature changed from -40~105°C to -40~115°C | JODY     |
| △    | 11/17'12 | Change the screw plating specification          | Jacky    |
| △    | 11/17'12 | Change the dimensional tolerance                | Jacky    |

*THIS IS CAD DRAWING, DO NOT REVISE MANUALLY!!!*

**MATERIALS ELECTRICAL**  
**RATED VOLTAGE & CURRENT:** 300 V, 20 A  
**WITHSTAND VOLTAGE:** AC 2000 V/Min  
**INSULATION RESISTANCE:** 1000 MΩ OR MORE AT DC 500 V  
**OPERATING TEMPERATURE RANG:** △ -40 °C ~ +115 °C  
**SCREW TORQUE VALUE:** 12 Lb-In.  
**WIRE RANGE:** 22 - 12 AWG  
**1) MOLDED PARTS:** POLYIMIDE 66, UL 94 V-0 BLACK  
**2) TERMINAL:** BRASS, 0.8t, Tin PLATED  
**3) TERMINAL SCREWS:** STEEL, M3.5

APPROVAL:   
 Critical dimension: ▽

PART NO.:

YK 606 xx 3 x x 00G

NO. OF POLES  
 04: 4 POLES  
 05: 5 POLES  
 06: 6 POLES  
 ...  
 30: 30 POLES

G:RoHS compliant(lead<4%)  
 in copper alloy

MARK  
 0: "@" MARK  
 1: "ANY" MARK

TERMINAL & SCREW PLATED  
 0: TERMINAL & SCREW: G/F  
 △ 1: TERMINAL: G/F, SCREW: Zinc  
 2: TERMINAL: Sn, SCREW: G/F  
 △ 3: TERMINAL: Sn, SCREW: Zinc

**ANYTEK**

**CUSTOMER COPY**

ALL RIGHTS RESERVED. REPRODUCTION OR ISSUE TO THIRD PARTIES IN ANY FORM WHATSOEVER IS NOT PERMITTED WITHOUT WRITTEN AUTHORITY FROM THE PROPRIETOR. PROPERTY OF ANYTEK TECHNOLOGY CO., LTD

|          |         |  |          |              |  |             |
|----------|---------|--|----------|--------------|--|-------------|
| TITLE    |         | YK-606 With Flange&Without Cover Series(4-30P) |          |              |  |             |
| PART NO. |         | YK606xx3xx00G                                  |          | DWG NO.      |  | 8YK0003-606 |
| APPROVED | CHECKED | DESIGNED                                       | DRAWN    | CUST NO.     |  | Tolerance   |
|          |         | Jacky  | Jacky    |              |  | X. ±0.50    |
|          |         | 11/17 12                                       | 11/17 12 |              |  | X.X ±0.30   |
|          |         |  |          | UNIT: mm     |  | X.XX ±0.10  |
|          |         |  |          | SCALE: NONE  |  | X° ±1°      |
|          |         |  |          | SHEET: 01/01 |  | REV.: D     |