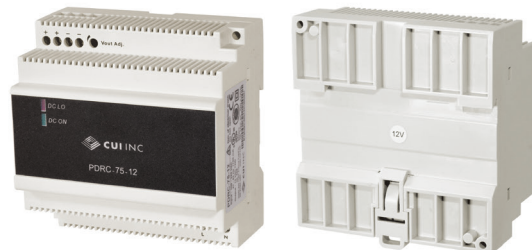




SERIES: PDRC-75 | DESCRIPTION: AC-DC DIN RAIL POWER SUPPLY

FEATURES

- low profile for building automation
- universal input (90~264 Vac)
- integrated fuse and surge protection
- 3,000 Vac input/output isolation voltage
- DC On/Low LED indicators
- over-voltage/current protection
- UL/cUL, TUV, CE certified

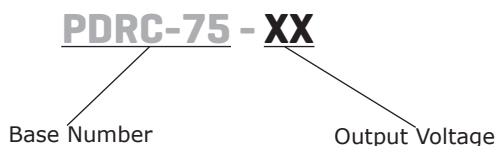


MODEL	output voltage	output current	output power	ripple and noise ¹	efficiency ²
	(Vdc)	max (A)	max (W)	max (mVp-p)	typ (%)
PDRC-75-5	5	12.0	60	50	80
PDRC-75-12	12	6.0	72	50	86
PDRC-75-15	15	5.0	75	50	86
PDRC-75-24	24	4.2	100	50	89
PDRC-75-24-2 ³	24	3.8	91	50	89

Notes:

1. At full load, nominal input, 20 MHz bandwidth oscilloscope.
2. At nominal input.
3. Model PDRC-75-24-2 is UL 1310 certified.
4. All specifications are measured at $T_a=25^{\circ}\text{C}$, nominal input voltage, and rated output load unless otherwise specified.

PART NUMBER KEY



INPUT

parameter	conditions/description	min	typ	max	units
voltage		90		264	Vac
		120		375	Vdc
frequency		47		63	Hz
current	at 90 Vac, full load			1.5	A
	5 Vdc output model			1.7	A
	12, 15 output model			2.2	A
inrush current	at 115 Vac, full load			30	A
	at 230 Vac, full load			60	A
leakage current	input to output			0.25	mA

OUTPUT

parameter	conditions/description	min	typ	max	units
capacitive load	at Vi nom, full load			3,500	μF
initial set point accuracy				±1	%
line regulation	at full load, V in min to V in max			±1	%
load regulation	at Vi nom, 0~100% load			±1	%
adjustability	via built in trim pot, 0.8 A load				
	5 Vdc output model	5		5.5	Vdc
	12 Vdc output model	12		14	Vdc
	15 Vdc output model	13.5		16.5	Vdc
	24 Vdc output model	24		28	Vdc
rated continuous loading at max trim voltage	24 Vdc output model (PDRC-75-24-2)	20		24.2	Vdc
	5 Vdc output model (5.5 Vdc)			10.5	A
	12 Vdc output model (14.0 Vdc)			5.1	A
	15 Vdc output model (16.5 Vdc)			4.5	A
	24 Vdc output model (28.0 Vdc)			3.6	A
start-up time	24 Vdc output model (PDRC-75-24-2) (24.2 Vdc)			3.7	A
	at Vi nom, full load			1.0	s
rise time	at Vi nom, full load with max capacitive load			1.5	s
	at Vi nom, full load			150	ms
hold-up time	at Vi nom, full load with max capacitive load			500	ms
	5, 12 Vdc output models				
	at 115 Vac, full load	16			ms
	at 230 Vac, full load	60			ms
fall time	15, 24 Vdc output models				
	at 115 Vac, full load	12			ms
transient recovery time	at 230 Vac, full load	60			ms
switching frequency	at Vi nom, full load	35		45	kHz
temperature coefficient				±0.03	%/°C
power back immunity	at Vi nom, full load, for 1 second				
	5 Vdc output model	7.5			Vdc
	12 Vdc output model	18			Vdc
	15 Vdc output model	22			Vdc
DC ON indicator threshold at start-up (GREEN)	24 Vdc output model	35			Vdc
	5 Vdc output model	3.5		4.5	Vdc
	12 Vdc output model	9.0		10.8	Vdc
	15 Vdc output model	11.0		13.5	Vdc
DC LOW indicator threshold after start-up (RED)	24 Vdc output model	19.2		21.6	Vdc
	5 Vdc output model	3.5		4.5	Vdc
	12 Vdc output model	9.0		10.8	Vdc
	15 Vdc output model	11.0		13.5	Vdc
	24 Vdc output model	19.2		21.6	Vdc

PROTECTIONS

parameter	conditions/description	min	typ	max	units
over voltage protection	at Vi nom, full load, auto recovery				
	5 Vdc output model	5.75		6.5	Vdc
	12 Vdc output model	15		16.5	Vdc
	15 Vdc output model	18		20	Vdc
	24 Vdc output model	30		33	Vdc
	24 Vdc output model (PDRC-75-24-2)	24.5		25.5	Vdc
over current protection	fold forward (see curve)				
	24 Vdc output model (PDRC-75-24-2)	102		108	%
	all other models	110		150	%
short circuit protection	fold forward				

SAFETY & COMPLIANCE

parameter	conditions/description	min	typ	max	units
isolation voltage	input to output for 1 minute	3,000			Vac
		4,242			Vdc
isolation resistance	input to output at 500 Vdc	100			MΩ
safety approvals ⁵	UL 508, UL 1310, UL 60950-1, EN 60950-1 ISA 12.12.01 (Class I, Div 2, Groups A~D)				
safety class	class I				
EMI/EMC	EN 55032 Class B, EN 55024, ENV 50204, EN 61204-3, EN 61000-3-2, EN 61000-3-3, EN 61000-6-2, EN 61000-6-3, EN 61000-4-2, EN 61000-4-3, EN 61000-4-4, EN 61000-4-5, EN 61000-4-6, EN 61000-4-8, EN 61000-4-11				
pollution degree	2				
degree of protection	IP20				
MTBF	as per Bellcore Issue 6 at 40 °C, GB				
	5 Vdc output model		610,000		hours
	12 Vdc output model		578,000		hours
	15 Vdc output model		581,000		hours
	24 Vdc output model		554,000		hours
	24 Vdc output model (PDRC-75-24-2)		583,000		hours
RoHS	yes				

Notes: 5. Model PDRC-75-24-2 is only model that is UL 1310 certified.

6. The power supply is considered a component which will be installed into final equipment. The final equipment still must be tested to meet the necessary EMC directives.

ENVIRONMENTAL

parameter	conditions/description	min	typ	max	units
operating temperature	see derating curves	-40		71	°C
storage temperature		-40		85	°C
humidity	non-condensing	20		95	%
altitude	IEC 60068-2-13			4,850	m
vibration	meets IEC 60068-2-6 (Mounting on rail: 10~500 Hz, 2 G, along X,Y,Z axis, for 60 minutes on each axis)				
shock	meets IEC 60068-2-27 (15 G, 11 ms, 3 axis, 6 faces, 3 times for each face)				

MECHANICAL

parameter	conditions/description	min	typ	max	units
dimensions	91.00 x 90.00 x 57.00 (3.58 x 3.54 x 2.24 inches)				mm
material	plastic				
weight			380		g
cooling	natural convection				
input/output connector	accepts 24~12 AWG wire				

MECHANICAL DRAWING

units: mm [inch]

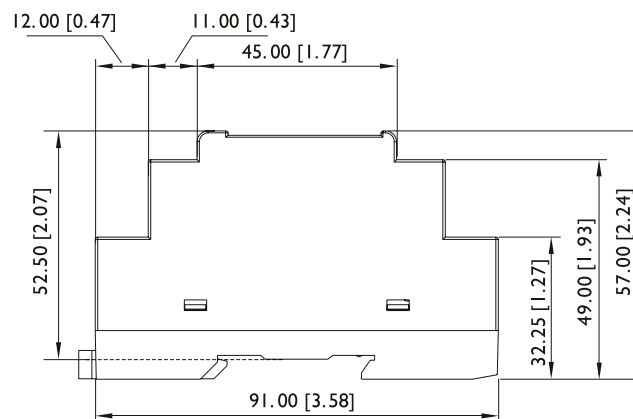
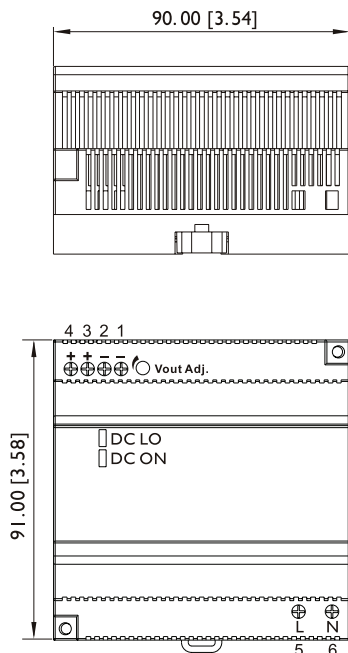
tolerance:

X≤30.00: ±0.30 [±0.01]

30.00<X≤120.00: ±0.50 [±0.02]

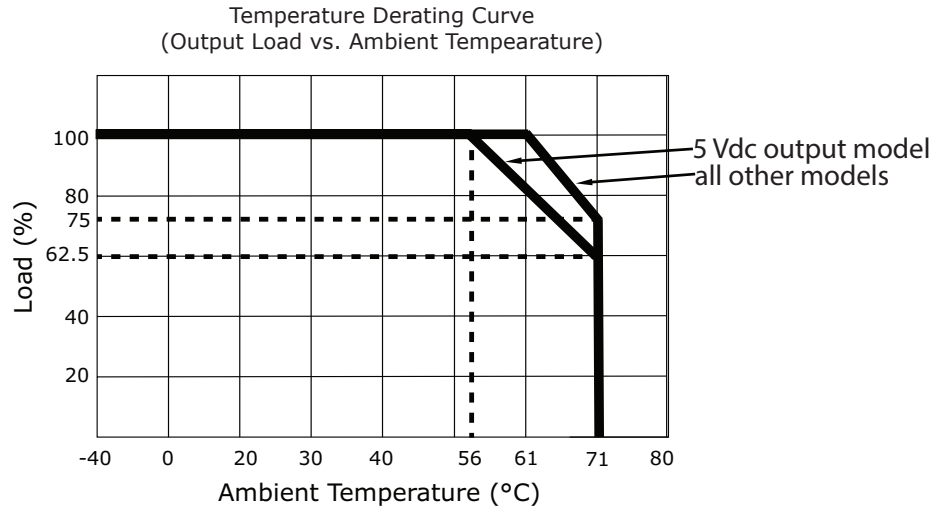
unless otherwise noted

TERMINAL CONNECTIONS	
TERMINAL	Function
1	V-
2	V-
3	V+
4	V+
5	L
6	N

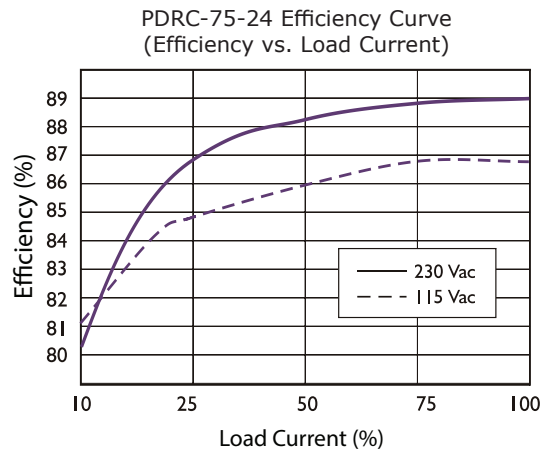


INSTALLATION	
DIN RAIL	TS35/7.5 or TS35/15
Cable	flexible/solid, copper conductors only, 60/75°C
Wire Range	24~12 AWG (0.2~2.5 mm ²)
Strip Length	7 mm
Screw Torque	6 lb·in
Position	Vertical
Cooling	Natural convection, 25 mm clearance on all sides

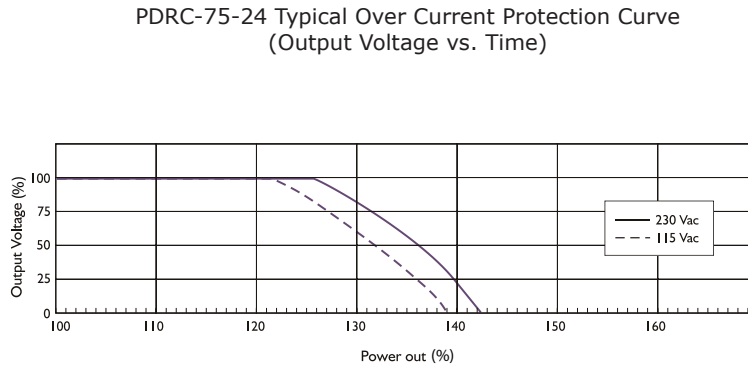
DERATING CURVES



EFFICIENCY CURVES



CURRENT LIMITED CURVE



REVISION HISTORY

rev.	description	date
1.0	initial release	06/17/2019

The revision history provided is for informational purposes only and is believed to be accurate.



CUI INC[®]

Headquarters
20050 SW 112th Ave.
Tualatin, OR 97062
800.275.4899

Fax 503.612.2383
cui.com
techsupport@cui.com

CUI offers a two (2) year limited warranty. Complete warranty information is listed on our website.

CUI reserves the right to make changes to the product at any time without notice. Information provided by CUI is believed to be accurate and reliable. However, no responsibility is assumed by CUI for its use, nor for any infringements of patents or other rights of third parties which may result from its use.

CUI products are not authorized or warranted for use as critical components in equipment that requires an extremely high level of reliability. A critical component is any component of a life support device or system whose failure to perform can be reasonably expected to cause the failure of the life support device or system, or to affect its safety or effectiveness.