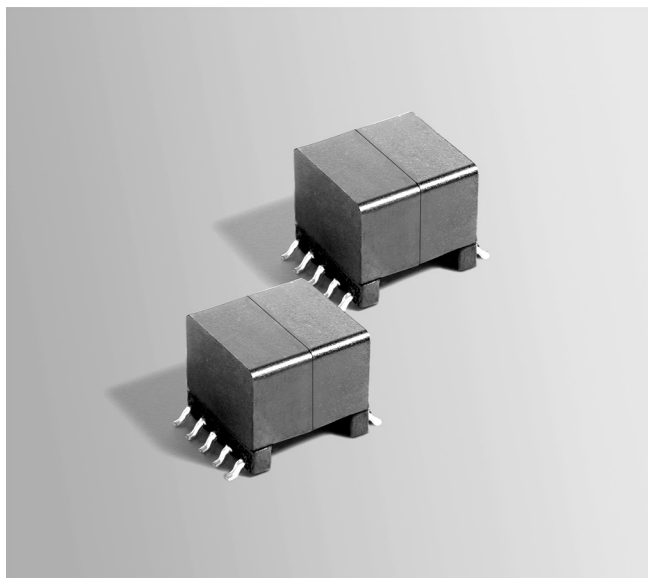




Flyback Transformers

For Silicon Laboratories
Si3402 PD Controllers



- Designed for Power over Ethernet PD controllers for applications up to 15 Watts.
- Operates in continuous conduction mode with 36 – 57 V input
- 1500 Vrms, one minute isolation between primary and secondary

Core material Ferrite

Terminations RoHS tin-silver over tin over nickel over phos bronze. Other terminations available at additional cost.

Weight 6.57 – 6.71 g

Ambient temperature –40°C to +85°C

Storage temperature Component: –40°C to +85°C.

Tape and reel packaging: –40°C to +80°C

Resistance to soldering heat Max three 40 second reflows at +260°C, parts cooled to room temperature between cycles

Moisture Sensitivity Level (MSL) 1 (unlimited floor life at <30°C / 85% relative humidity)

Failures in Time (FIT) / Mean Time Between Failures (MTBF)

38 per billion hours / 26,315,789 hours, calculated per Telcordia SR-332

Packaging 175 per 13" reel. Plastic tape: 32 mm wide, 0.5 mm thick, 28 mm pocket spacing, 12.93 mm pocket depth

PCB washing Tested with pure water or alcohol only. For other solvents, see Doc787_PCB_Washing.pdf

Part number ¹	Power (W)	Inductance at 0 A ² ±10% (μH)	Inductance at I _{pk} ³ min (μH)	DCR max (Ohms) ⁴		Leakage inductance ⁵ max (μH)	Turns ratio ⁶ pri : sec	I _{pk} ³ (A)	Output ⁷
FA2924-AL_	15	40.0	36.0	0.100	0.025	0.666	1 : 0.3	2.0	3.3 V, 4.5 A
FA2805-CL_	15	40.0	36.0	0.108	0.040	0.621	1 : 0.4	2.0	5.0 V, 3.0 A
FA2925-AL_	15	40.0	36.0	0.100	0.155	0.566	1 : 1	2.0	12.0 V, 1.25 A

1. When ordering, please specify **packaging** code:

FA2925-ALD

Packaging: D = 13" machine-ready reel. EIA-481 embossed plastic tape (175 parts per full reel).

B = Less than full reel. In tape, but not machine ready. To have a leader and trailer added (\$25 charge), use code letter D instead.

2. Inductance is for the primary, measured at 200 kHz, 0.2 Vrms, 0 Adc.

3. I_{pk} is peak primary current drawn at minimum input voltage.

4. DCR for the secondary is per winding.

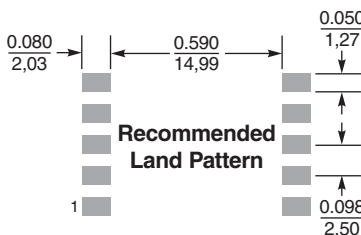
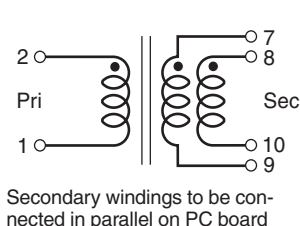
5. Leakage inductance measured between pins 1 and 2 with all secondary pins shorted.

6. Turns ratio is with the secondary windings connected in parallel.

7. Output is with the secondary windings connected in parallel.

8. Electrical specifications at 25°C.

Refer to Doc 362 "Soldering Surface Mount Components" before soldering.



Dimensions are in $\frac{\text{inches}}{\text{mm}}$

