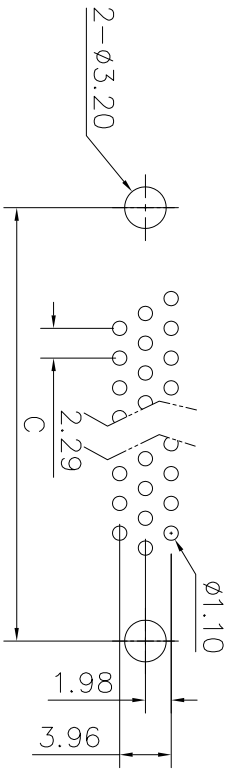
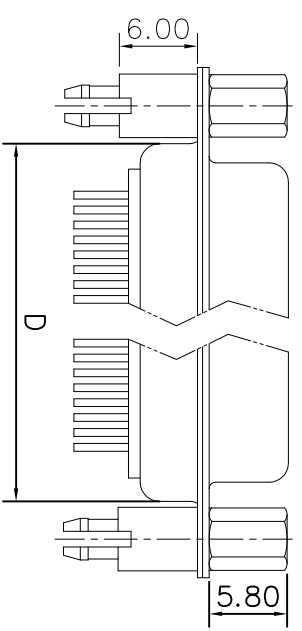
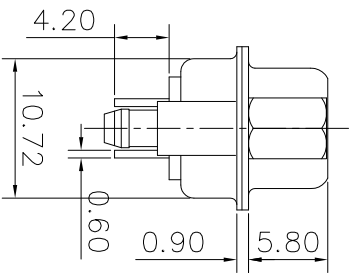
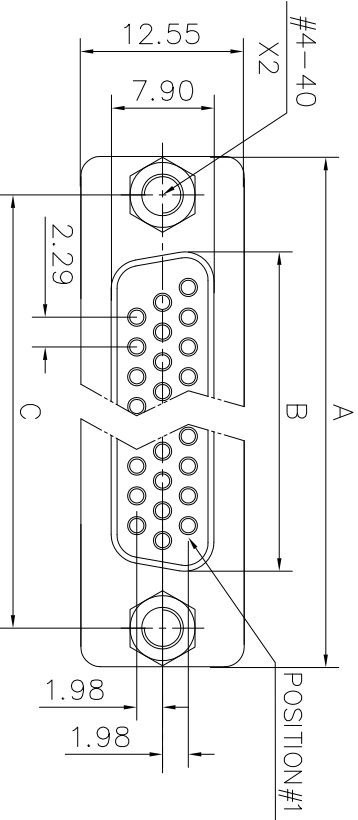


This document is the property of Amphenol Corporation and is addressed to the specific customer. It is not to be reprinted, reproduced or used, in whole or in part, without the prior consent of Amphenol Corporation. Amphenol Corporation will not be held responsible for any errors or omissions in this document or to use any information in this document.



RECOMMENDED P.C.B LAYOUT
(TOLERANCE +/-0.03)

DIM. S	A	B	C	D
SHELL	A	B	C	D
15	30.84	16.24	24.99	19.28
26	39.24	24.56	33.32	27.51
44	53.04	38.38	47.04	41.30
62	69.32	54.76	63.50	57.71

Customer drawing

REVISONS		DATE	APPROVED
1	SWM EGN	04/14/08	

D-SUB TECHNICAL DATA

SHELL : Steel 100u" min tin over 50u" min nickel
 BODY : Glass filled thermoplastic.
 Flame retardant to UL94 V-0 Color Black

CONTACTS : Brass
 Gold flash over 50u" min nickel on mating area
 100u" min tin over 50u" min nickel on solder area

BOARDLOCK : Brass. 100u" min tin over 50u" min nickel

SCREWLOCK: Brass. 50u" min nickel

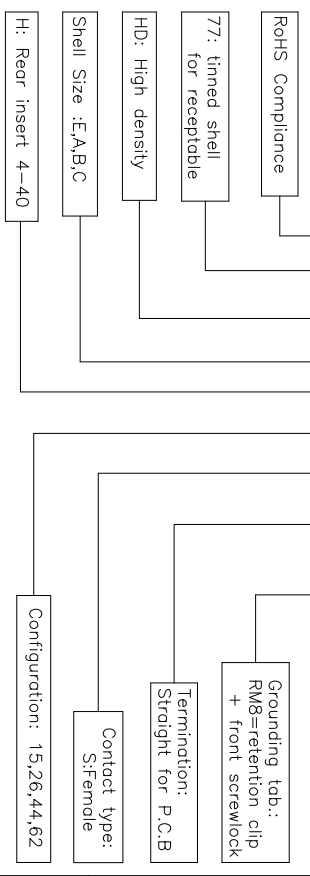
ELECTRICAL : Voltage rating 250 V Rms to 50 Hz
 Current rating signal contacts 3A
 Withstanding Voltage >1000 V Rms to 50 Hz for one minute
 Insulation resistance >5000 M Ohms
 Contact resistance 20 mOhms max.

CLIMATIC : Temperature range -55 °C up to 125°C

MARKING : Amphecol...(Series No.)
 Commercial reference
 Manufacturing date

PRODUCT CODE

L77 HD X H XX S OL2 RM8



UNLESS OTHERWISE SPECIFIED	APPROVAL	DATE	TITLE
TOLERANCES	DRAWN	04/14/08	Amphenol
U.S. METRIC	CHECKED	04/14/08	
.X +/- XX FRACTIONS +/- ANGLES +/-	Li.k.wing		Stamped and formed connector, HD series
SEE MATERIALS AND FINISHES	DRAWING FILE :		
REMOVE SHARP EDGES	ANGLE OF PROJECTION		
DIMENSIONS	SIZE	DRAWING NO.	REV.
U.S. INCHES	A4	C L77HDXXXXSOL2RM8	1
METRIC MM	SCALE	NONE	SHEET 1 OF 1