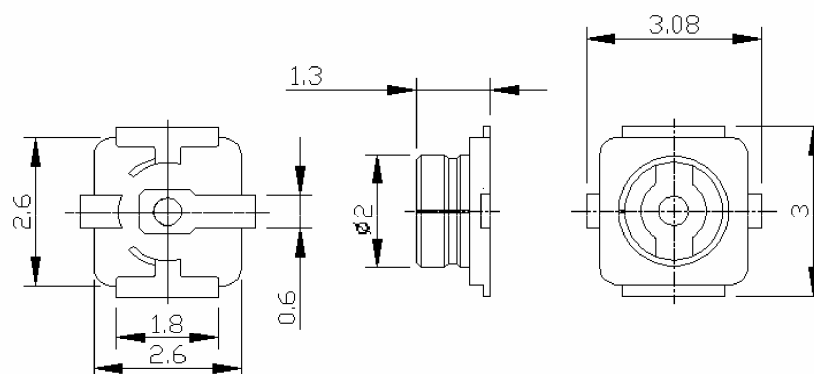
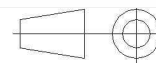


STRAIGHT RECEPTACLE FOR PCB H2.0-H2.5**R302.302.000****REEL OF 1000**

Series : MML



All dimensions are in mm.



COMPONENTS	MATERIALS	PLATING (µm)
BODY	BRONZE	GOLD
CENTER CONTACT	BRASS	GOLD
OUTER CONTACT		
INSULATOR	LCP	
GASKET		
OTHERS PARTS		
.	.	.
.	.	.

Issue : 1020 A

In the effort to improve our products, we reserve the right to make changes judged to be necessary.

RADIAL 

STRAIGHT RECEPTACLE FOR PCB H2.0-H2.5**R302.302.000****REEL OF 1000**

Series : MML

PACKAGING

Standard	Unit	Other
1000	'W' option	Contact us

SPECIFICATION**ELECTRICAL CHARACTERISTICS**

Impedance	50	Ω
Frequency	0-6	GHz
VSWR	1.35 + 0,0000	x F(GHz) Maxi
Insertion loss	NA	$\sqrt{F}(\text{GHz})$ dB Maxi
RF leakage	NA	- F(GHz)) dB Maxi
Voltage rating	60	Veff Maxi
Dielectric withstanding voltage	200	Veff mini
Insulation resistance	500	M Ω mini

ENVIRONMENTAL

Operating temperature	-40/+90	$^{\circ}\text{C}$
Hermetic seal	NA	Atm.cm3/s
Panel leakage	NA	

OTHER CHARACTERISTICS

Assembly instruction

Others :

MECHANICAL CHARACTERISTICS

Center contact retention	
Axial force – Mating end	NA N mini
Axial force – Opposite end	NA N mini
Torque	NA N.cm mini
Recommended torque	
Mating	NA N.cm
Panel nut	NA N.cm
Mating life	30 Cycles mini
Weight	0,0200 g

Issue : 1020 A

In the effort to improve our products, we reserve the right to make changes judged to be necessary.

RADIAL 

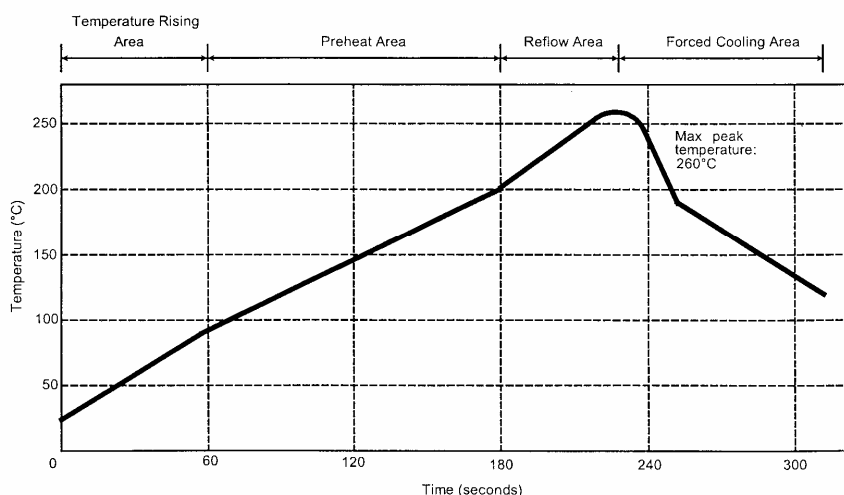
STRAIGHT RECEPTACLE FOR PCB H2.0-H2.5**REEL OF 1000****R302.302.000**

Series : MML

SOLDER PROCEDURE

1. Deposit solder paste 'Sn Ag4 Cu0.5' on mounting zone by screen printing application. We recommend a low residue flux.
We advise a thickness of 150 microm (5.850 microinch). Verify that the edges of the zone are clean.
2. Placement of the receptacle on the mounting zone with an automatic machine of 'pick and place' type. A video camera is recommended for positioning of the component . Adhesive agents must not be used on the receptacle.
3. This process of soldering has been tested with convection oven .Below please find ,the typical profile to use.
4. The cleaning of printed circuit boards is not obliged .
5. Verification of solder joints and position of the component by visual inspection.

NOTE : The receptacle and the plug must not be mated before completion of this procedure

TEMPERATURE PROFILE

Parameter	Value	Unit
Temperature rising Area	1 - 4	°C/sec
Max Peak Temperature	260	°C
Max dwell time @260°C	10	sec
Min dwell time @235°C	20	sec
Max dwell time @235°C	60	sec
Temperature drop in cooling Area	-1 to - 4	°C/sec
Max dwell time above 100°C	420	sec

Issue : 1020 A

In the effort to improve our products, we reserve the right to make changes judged to be necessary.

RADIAL 

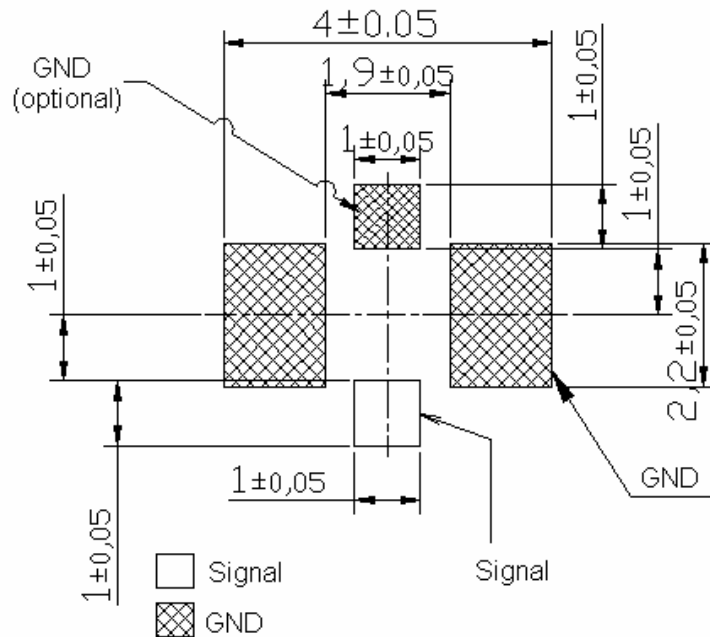
STRAIGHT RECEPTACLE FOR PCB H2.0-H2.5

R302.302.000

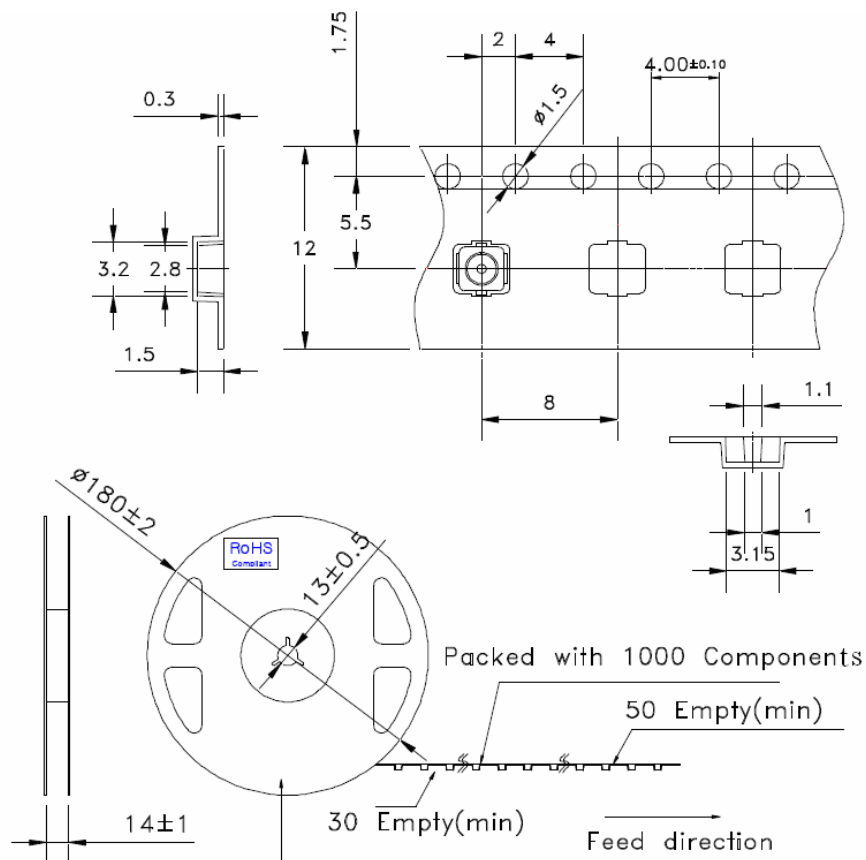
REEL OF 1000

Series : MML

RECOMMENDED PCB DIMENSIONS



PACKING



Issue : 1020 A

In the effort to improve our products, we reserve the right to make changes judged to be necessary.

RADIAL