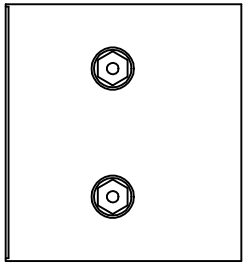
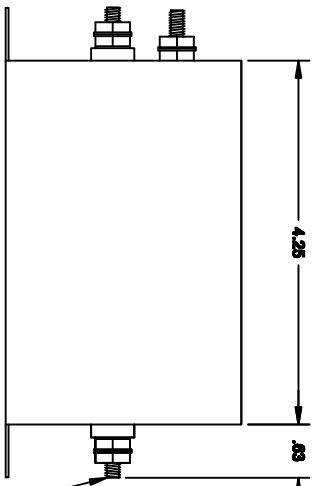
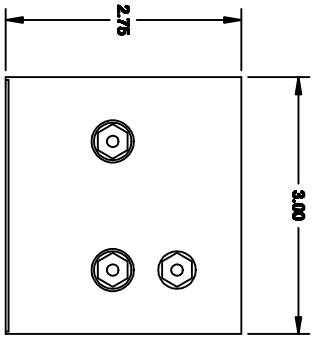
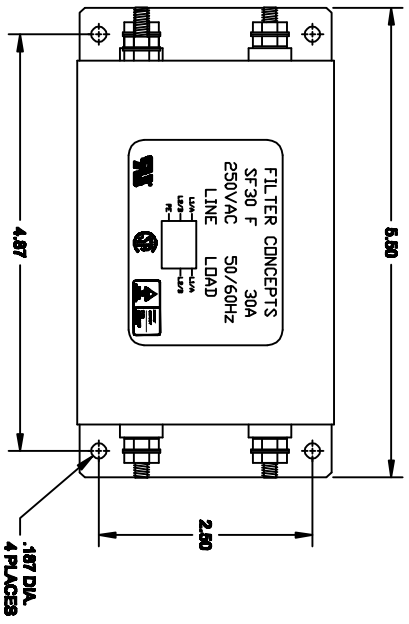


REVISION			
LTR	DESCRIPTION	DATE	APPROVED
A	INITIAL RELEASE	02-19-03	LE

SPECIFICATIONS

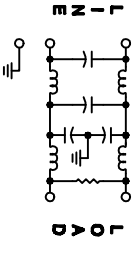
1. CASE: 22 GA. (0.80) CR8, TIN PLATED
2. RATED CURRENT: 30A
3. RATED VOLTAGE: 250VAC, 50/60HZ
4. TEST VOLTAGE: LINE TO LINE: 1.7KVDC
LINE TO GROUND: 2.8KVDC
5. LEAKAGE CURRENT: 1.0mA @ 250VAC, 60Hz



INSERTION LOSS (50 Ω TYPICAL)

	.05 MHz	.15 MHz	.50 MHz	1.5 MHz	5.0 MHz	20 MHz
L/L	18 db	50 db	65 db	50 db	50 db	55 db
L/G	8 db	45 db	65 db	65 db	55 db	45 db

SCHEMATIC



APPLICATION	USED ON

ALL DIMENSIONS UNLESS OTHERWISE SPECIFIED DIMENSIONS ARE IN INCHES TOLERANCES ARE: FINISHES: DECIMALS ANGLES & XX (.0005) & MATERIAL: 3003 H14	CONTRACT NO. APPROVALS DATE
DRAWN: QUANG TRINH CHECKED: DANH VIUONG DATE: 02-19-03	FINISH:

FILTER CONCEPTS INC.

APPLICATION DRAWING

SF30 F FILTER

SIZE: **B** CODE IDENT. NO. DRAWING NO. **7665**

SCALE: 3/4" = 1" SHEET 1 OF 1