

APPROVED BY: *C. Westrich* DATE: 4-30-92 REV: 6

SAFETY ORGANIZATION(S).
THIS FILTER HAS BEEN FORMALLY RECOGNIZED, CERTIFIED OR APPROVED BY THE LISTED AGENCY. THEREFORE, ALL TEST/REQUIREMENTS SPECIFIED IN THE LATEST REVISION OF THE FOLLOWING AGENCY STANDARDS HAVE BEEN MET.

UL 1283
CSA 22.2, NO. 0.0.4.8
VDE 565-3, 625
SEN 432901
SEV 1055/TP1977/5.1.1

OPERATING SPECIFICATIONS.
LINE VOLTAGE/CURRENT:

2 AMP., 120/250 VAC
2 AMP./40°C, 250 VAC
50-60HZ
.25mA @ 120V 50HZ
.40mA @ 250V 50HZ
-10°C TO +40°C @ RATED CURRENT, I_r

IN AN AMBIENT, I_a, HIGHER THAN 40°C. THE MAXIMUM OPERATING CURRENT, I_o, IS AS FOLLOWS:

$$I_o = I_r \sqrt{\frac{85-I_a}{45}}$$

RELIABILITY SPECIFICATIONS.

STORAGE TEMPERATURE:
-25°C TO +85°C
HUMIDITY:
21 DAYS @ 40°C 95% RH
CURRENT OVERLOAD TEST:
6 TIMES RATED CURRENT FOR 8 SECONDS

TEST SPECIFICATIONS.

INDUCTANCE:
.75mH NOMINAL
CAPACITANCE: (MEASURED @ 1 KHz, 0.25 VAC MAX., 25°C ±1°C)
LINE TO GROUND:
.0028µF ±20%
LINE TO LINE:
.047µF ±20%
DISCHARGE RESISTOR:
1.5 MΩ
LINE/GROUND AND LINE/LINE INSULATION RESISTANCE (W/O DISCHARGE RESISTOR)
6000 MΩ (MIN) AT 100 VDC
20°C AND 50% RH

RECOMMENDED RECEIVING INSPECTION HIPOTL.

LINES TO GROUND,
LINE TO LINE,
2250 VDC FOR 1 MINUTE
1450 VDC FOR 1 MINUTE

FILTER APPROVAL.
THE BEST WAY TO SELECT AND QUALIFY A FILTER IS FOR YOUR ENGINEERING TO TEST THE UNIT IN YOUR EQUIPMENT.

TOLERANCE EXCEPT AS NOTED

DECIMAL: .XXX .XX .X ANGLES
ENGLISH: ±.025 ±.1
METRIC: ±

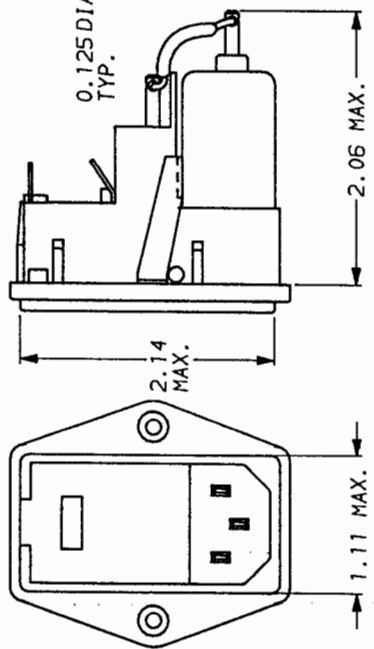
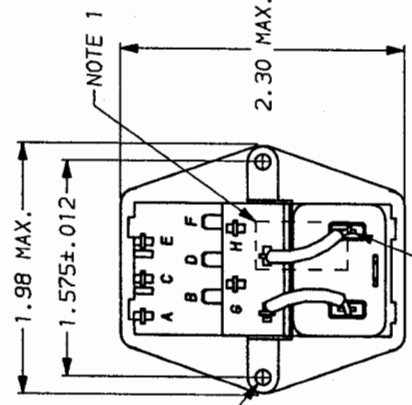
MATERIAL: AS SUPPLIED

FINISH:

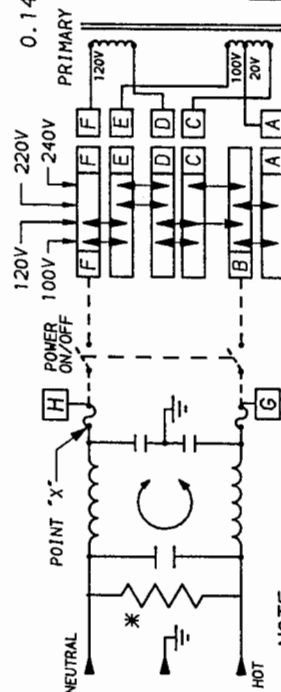
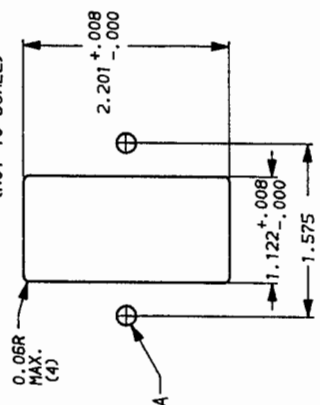


LIBERTYVILLE, IL 60048

SCALE	DATE	DRG. NO.	REV.
NTS	3-12-87	2EDL4	6
DES. BY	ORIGINATOR		
LJD	CFW	2EDL4 & 2EDL4M	6



RECOMMENDED PANEL CUTOUT
(NOT TO SCALE)



- NOTE:**
- 1.) PROVISION FOR DUAL EUROPEAN STYLE FUSING 2EDL4M ONLY.
 - 2.) 2EDL4 CONNECT JUMPER OR SWITCH FROM POINT X TO F AND FROM G TO B.

FREQUENCY PHZ	50Ω	15Ω	50Ω	1.0	3.0	5.0	10	30
COMMON	6	14	20	24	35	40	45	50
DIFF. dB	—	7	16	21	23	37	47	50

This document is proprietary to CORCOM INC. and is not to be reproduced nor used for manufacturing purposes except on CORCOM's order or prior written consent.

*RESISTOR ADDED TO PRODUCT BUILT AFTER 3-30-92 (9212).