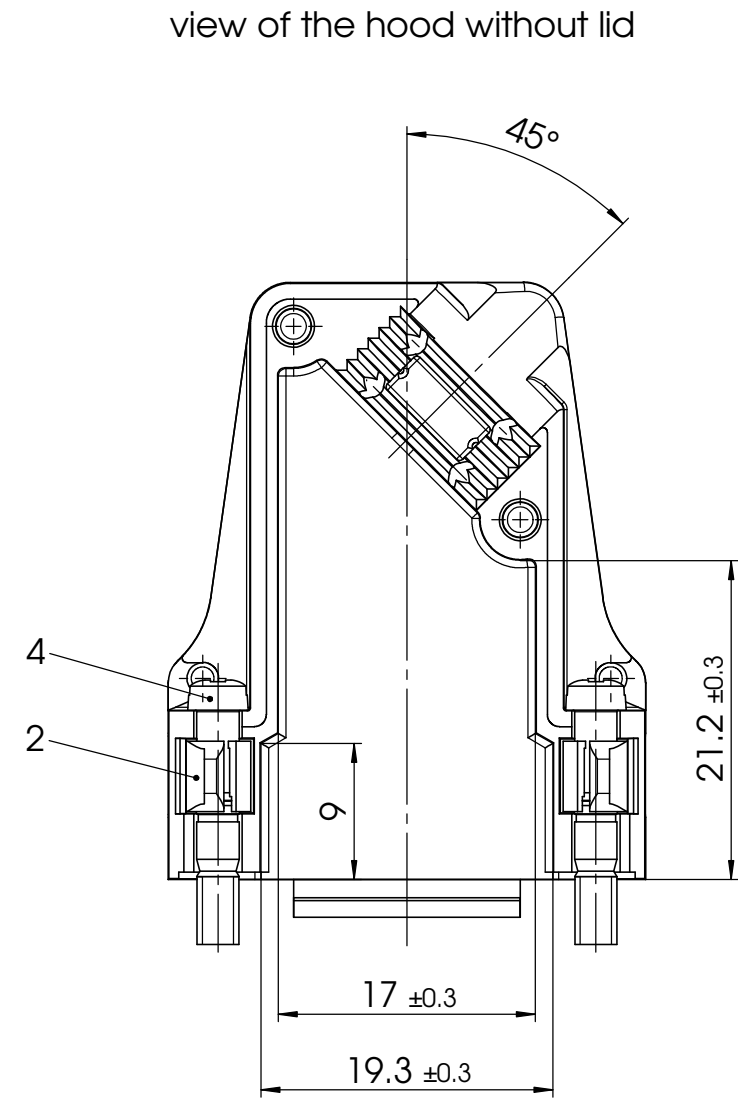
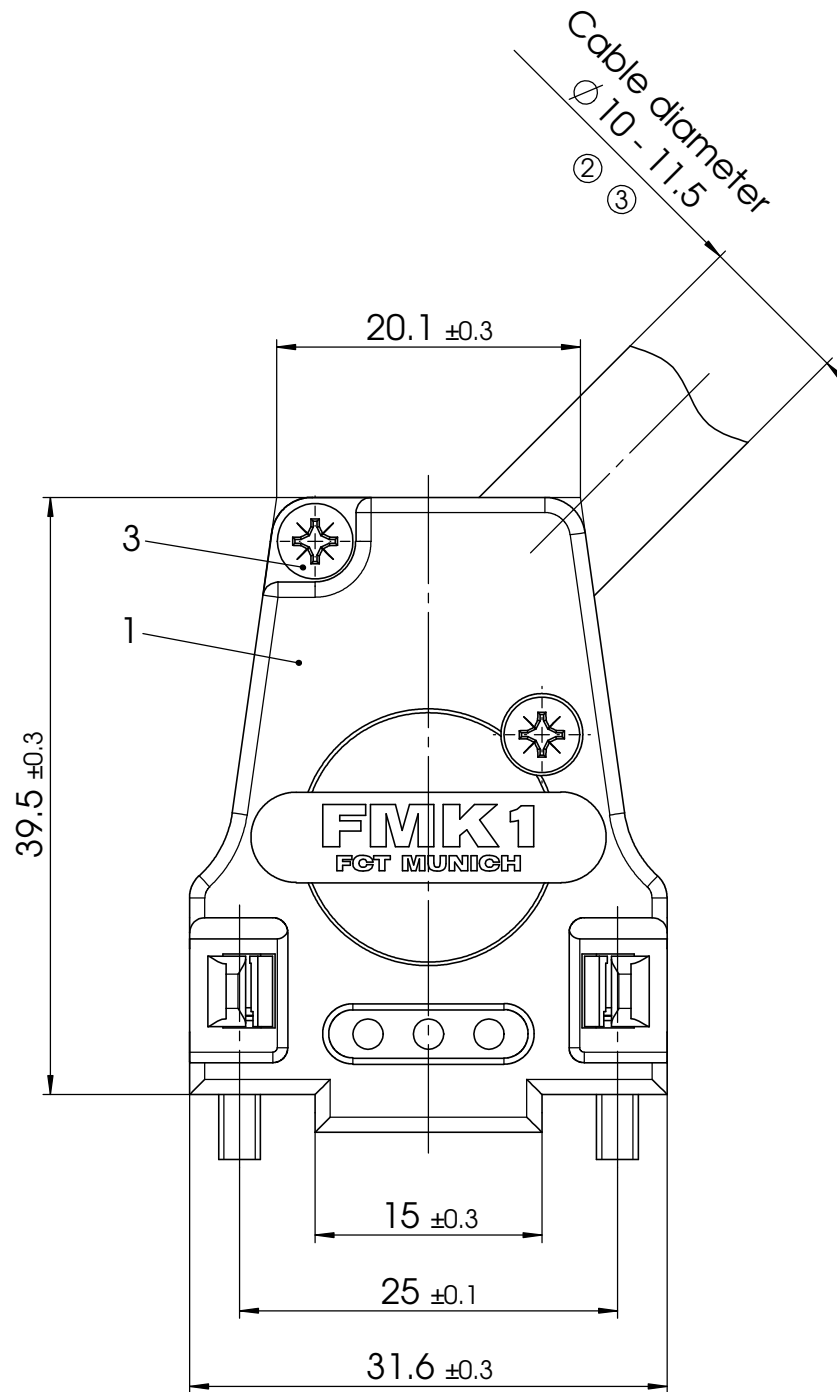
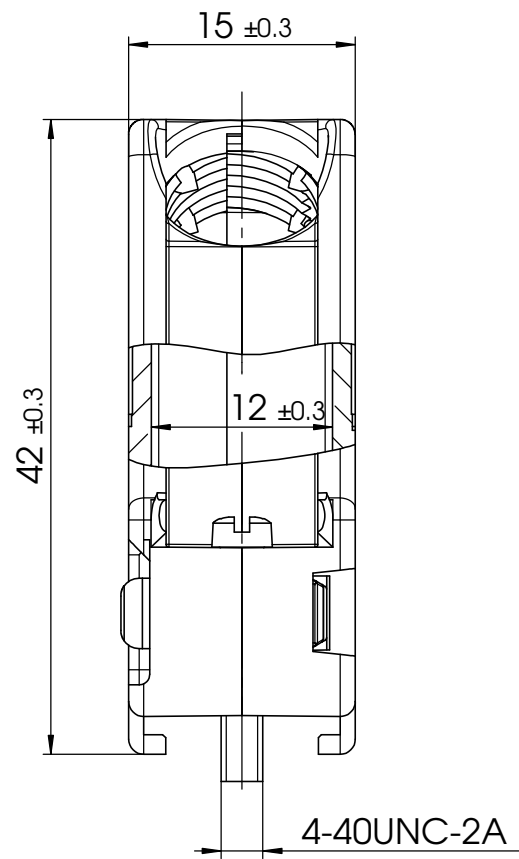




COMMENT:
ALL RIGHTS ARE RESERVED BY US FOR THIS DRAWING. WITHOUT OUR PRIOR CONSENT,
IT MAY NEITHER BE DUBICATED NOR MADE AVAILABLE TO A THIRD PARTY.
AND IT ALSO MAY NOT BE IMPROPERLY USED BY THE RECEIVER, OR A THIRD PARTY.



④ RoHS compliant

⑤

4	2	Locking screw	FVS1/5-K1163 4-40 / Steel	nickel plated
3	2	Screw	Case hardened steel	zinc plated
④ 2	2	Catch spring	Polyester	black
1	1	Hood	FMK1-K201 / Zinc die-cast	nickel plated
No.	St.	Part	Type Description/Material	Surface plating/Colour/Class

				Measurement without tolerance acc. to ISO 2768-m	SCALE 2:1	TITLE Metal Hood		
				NAME / DATE				
5	17-11-2011	22060	DRAWN	Denzinger 26-09-2003				
4	22-06-2007	22053	CHECKED	Anke.Meyer-Richter 26-04-2012				
3	19-10-2004	2 1457				DWG.NO.	FMK1-K201	R
2	17-02-2004	2 1348						
REV.	DATE	CH.-NO.	ORIGINAL: DIN A3-DRAWING AS A FILE			REPLACEMENT FOR:	PAGE	

④ max. torque are 40 Ncm

FMK1-K201