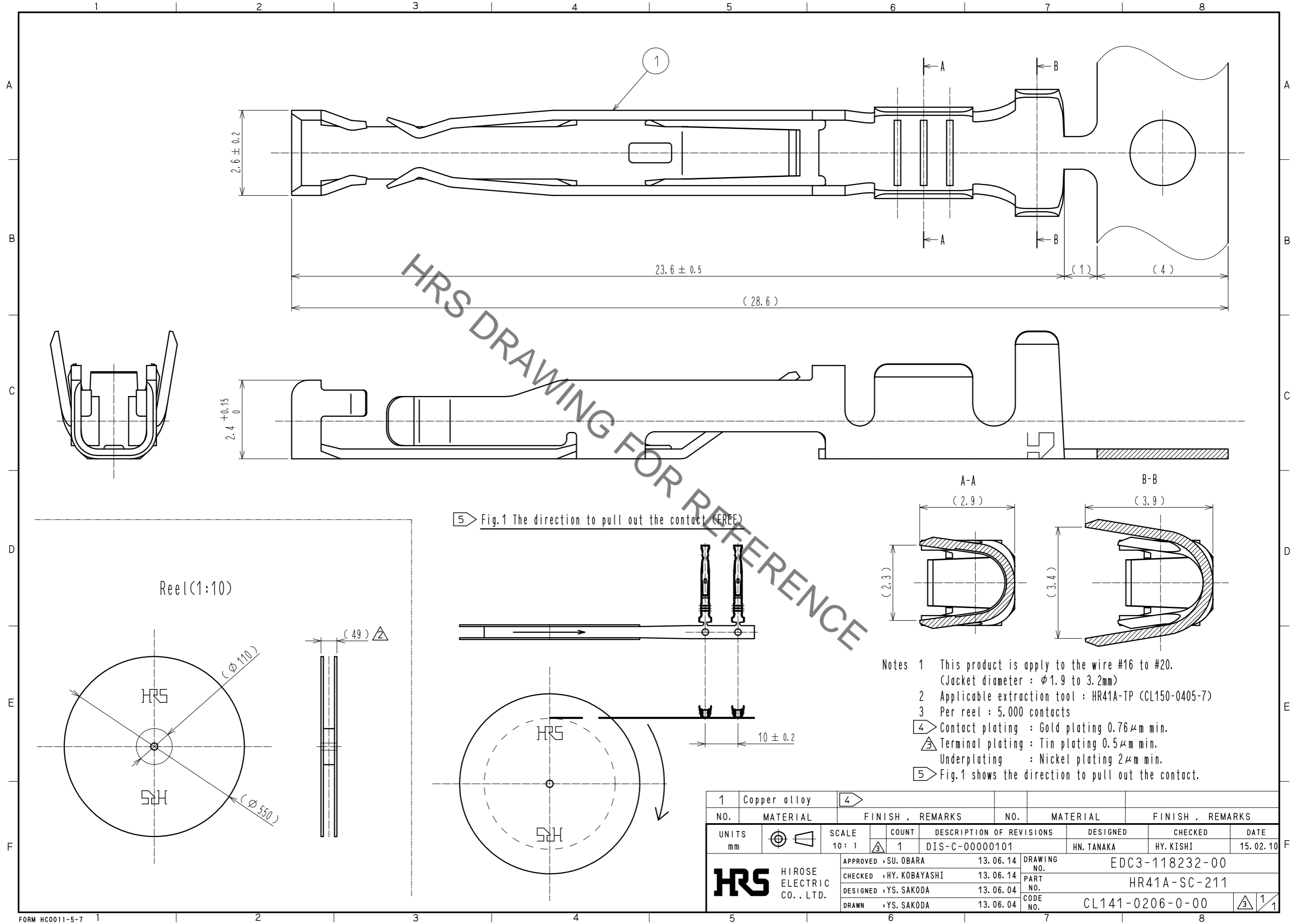


Jul.1.2019 Copyright 2019 HIROSE ELECTRIC CO., LTD. All Rights Reserved.  
 In case of consideration for using Automotive equipment / device which demand high reliability, kindly contact our sales window correspondents.



5 Fig.1 The direction to pull out the contact (FREE)

- Notes
- 1 This product is apply to the wire #16 to #20.  
(Jacket diameter :  $\phi 1.9$  to  $3.2\text{mm}$ )
  - 2 Applicable extraction tool : HR41A-TP (CL150-0405-7)
  - 3 Per reel : 5,000 contacts
  - 4 Contact plating : Gold plating  $0.76\mu\text{m}$  min.
  - Terminal plating : Tin plating  $0.5\mu\text{m}$  min.  
Underplating : Nickel plating  $2\mu\text{m}$  min.
  - 5 Fig.1 shows the direction to pull out the contact.

1	Copper alloy	4					
NO.	MATERIAL	FINISH	REMARKS	NO.	MATERIAL	FINISH	REMARKS
UNITS	$\odot$ $\triangleleft$	SCALE	COUNT	DESCRIPTION OF REVISIONS			DESIGNED
mm		10 : 1	1	DIS-C-00000101			HN. TANAKA
APPROVED : SU. OBARA				13.06.14	DRAWING NO.		
CHECKED : HY. KOBAYASHI				13.06.14	EDC3-118232-00		
DESIGNED : YS. SAKODA				13.06.04	PART NO.		
DRAWN : YS. SAKODA				13.06.04	HR41A-SC-211		
HRS HIROSE ELECTRIC CO., LTD.				CODE NO.			CL141-0206-0-00
							1/1