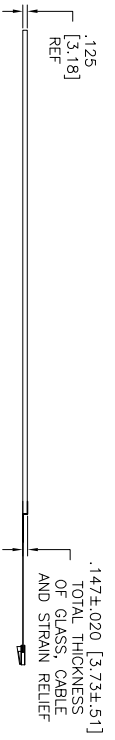
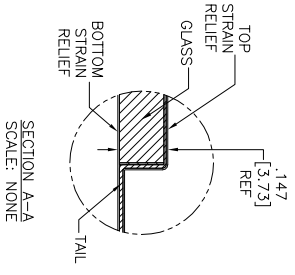
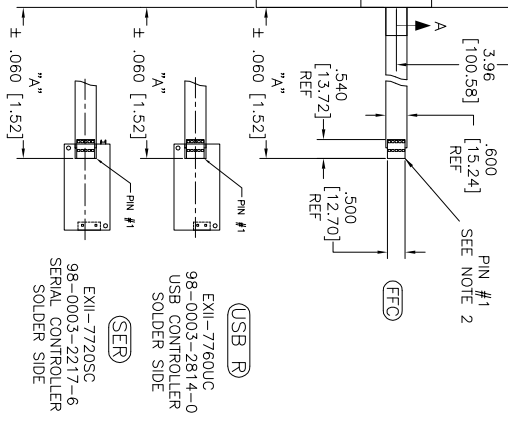
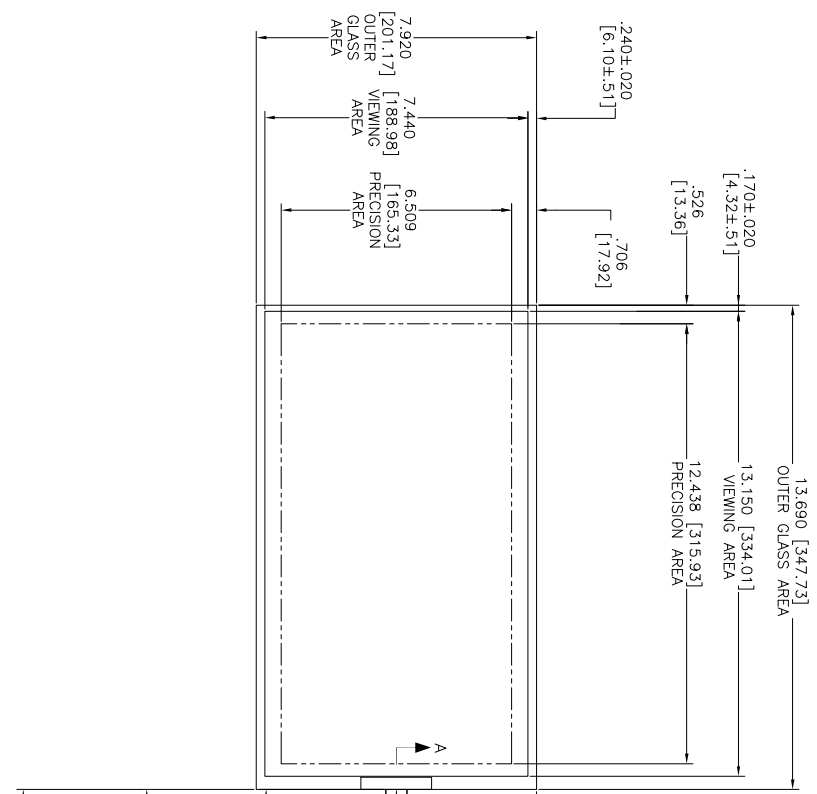


OGA DIAGONAL: 15.82 [401.72]
 VA DIAGONAL: 15.11 [385.76]
 PA DIAGONAL: 14.04 [356.57]

TOP LEVEL NUMBER	US NUMBER	TYPE	DM "A" (TOTAL GLASS TO CONNECTION)	A/G FINISH	PROD SPEC
17-9601-205	98-0003-2273-9	FCG	8.00" [203.20]	AG500	23655
17-9601-226	98-0003-3267-0	USB R	8.00" [203.20]	AG500	23655
17-9601-227	98-0003-3268-8	SER	8.00" [203.20]	AG500	23655



- NOTES:
1. WEIGHT OF GLASS IN GRAMS: 555±10%
 2. NICOMATIC HOUSING P/N: 0L05
 3. NICOMATIC RECEPTACLES (PINS) MATTE TIN PLATED P/N: 14106-12
 4. HOUSING ORIENTED WITH LATCH DOWN

PINOUT
1 UL
2 UR
3 SHLD
4 LR
5 LL

UNITS: INCHES [MM]

TOLERANCES UNLESS OTHERWISE SPECIFIED

X ±.03 [.76]
 .XX ±.015 [.38]
 .XXX ±.015 [.38]
 ANGLES ±1°

THIRD ANGLE PROJECTION

DO NOT SCALE DRAWING

SCALE: 1 = 1

3M TOUCH SYSTEMS
 3M TOUCH SYSTEMS
 USA
 3M TOUCH SYSTEMS
 USA
 3M TOUCH SYSTEMS
 USA

THIS DOCUMENT IS THE PROPERTY OF 3M TOUCH SYSTEMS. IT IS TO BE USED ONLY FOR THE PROJECT AND FOR WHICH IT WAS PREPARED. NO PART OF THIS DOCUMENT IS TO BE REPRODUCED OR TRANSMITTED IN ANY FORM OR BY ANY MEANS, ELECTRONIC OR MECHANICAL, INCLUDING PHOTOCOPYING, RECORDING, OR BY ANY INFORMATION STORAGE AND RETRIEVAL SYSTEM, WITHOUT THE WRITTEN PERMISSION OF 3M TOUCH SYSTEMS.

REV	DATE	BY	CHKD	DESCRIPTION
F	4/13	SB		REVISED PER CO 036256
E	2/12	SB		REVISED PER CO 034264
D	10/11	SEB		REVISED PER CO 033709
REV	DATE	BY	CHKD	DESCRIPTION

MARKETING DRAWING
 SCT32NN 15.11" W

3M TOUCH SYSTEMS
 3M TOUCH SYSTEMS
 USA

THIS DOCUMENT IS THE PROPERTY OF 3M TOUCH SYSTEMS. IT IS TO BE USED ONLY FOR THE PROJECT AND FOR WHICH IT WAS PREPARED. NO PART OF THIS DOCUMENT IS TO BE REPRODUCED OR TRANSMITTED IN ANY FORM OR BY ANY MEANS, ELECTRONIC OR MECHANICAL, INCLUDING PHOTOCOPYING, RECORDING, OR BY ANY INFORMATION STORAGE AND RETRIEVAL SYSTEM, WITHOUT THE WRITTEN PERMISSION OF 3M TOUCH SYSTEMS.

DMW S.Berford 10/09/08

SIZE: C

DOCUMENT NO: 36238-MKT

SHEET: 1 OF 1

REV: F