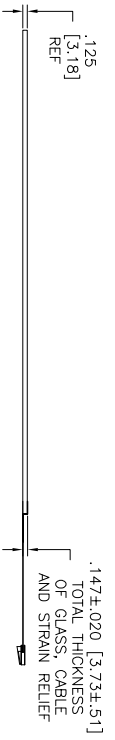
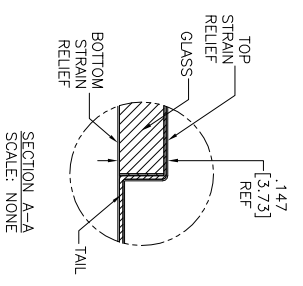
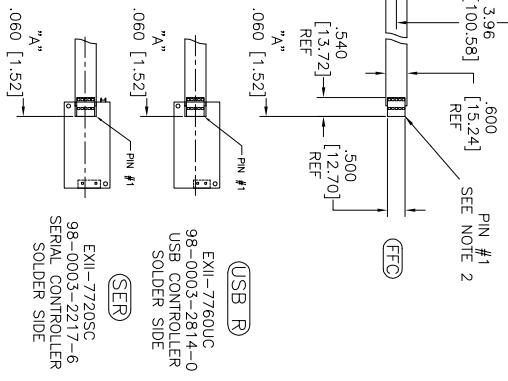
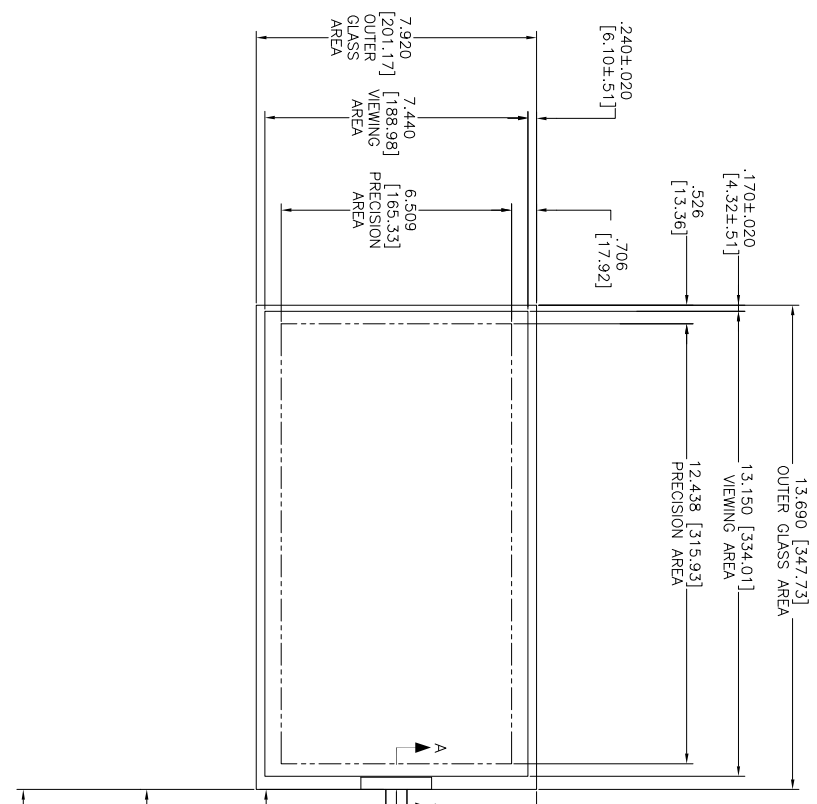


OGA DIAGONAL: 15.82 [401.72]
 VA DIAGONAL: 15.11 [385.76]
 PA DIAGONAL: 14.04 [356.57]

TOP LEVEL NUMBER	US NUMBER	TYPE	DM "A" (TOTAL GLASS TO CONNECTION)	A/G FINISH	PROD SPEC
17-9601-205	98-0003-2273-9	FTC	8.00" [203.20]	AG500	23655
17-9601-226	98-0003-3267-0	USB R	8.00" [203.20]	AG500	23655
17-9601-227	98-0003-3268-8	SER	8.00" [203.20]	AG500	23655



- NOTES:
1. WEIGHT OF GLASS IN GRAMS: 555±10%
 2. NICOMATIC HOUSING P/N: 0L05
 3. NICOMATIC RECEPTACLES (PINS) MATTE TIN PLATED P/N: 14106-12
 4. HOUSING ORIENTED WITH LATCH DOWN

PINOUT
1 UL
2 UR
3 SHLD
4 LR
5 LL

UNITS INCHES [MM]

TOLERANCES UNLESS OTHERWISE SPECIFIED

X ±.03 [.76]
 .XX ±.015 [.38]
 .XXX ±.015 [.38]
 ANGLES ±1°

3M TOUCH SYSTEMS
 3M TOUCH SYSTEMS
 USA
 3M TOUCH SYSTEMS
 USA
 3M TOUCH SYSTEMS
 USA

THIS DOCUMENT IS THE PROPERTY OF THE COMPANY AND IS TO BE KEPT CONFIDENTIAL. IT IS TO BE RETURNED TO THE COMPANY WITHOUT DELAY UPON REQUEST. PERMISSION TO USE OR REPRODUCE THIS DOCUMENT FOR OTHER THAN 3M AUTHORIZED PURPOSES IS PROHIBITED.

REV	DATE	BY	CHKD	APP'D
F	4/13	SB		
E	2/12	SB		
D	10/11	SEB		
C	10/11	SEB		

MARKETING DRAWING
 SCT32NN 15.11" W

DO NOT SCALE DRAWING

SCALE 1 = 1

DRAWN S.Berford 10/09/08

3M TOUCH SYSTEMS

3M TOUCH SYSTEMS
 USA
 3M TOUCH SYSTEMS
 USA

THIS DOCUMENT IS THE PROPERTY OF THE COMPANY AND IS TO BE KEPT CONFIDENTIAL. IT IS TO BE RETURNED TO THE COMPANY WITHOUT DELAY UPON REQUEST. PERMISSION TO USE OR REPRODUCE THIS DOCUMENT FOR OTHER THAN 3M AUTHORIZED PURPOSES IS PROHIBITED.

DATE 10/11

BY SEB

CHKD SEB

APP'D

SIZE C

DOCUMENT NO. 36238-MKT

SHEET 1 OF 1

REV F