



RP180 Series - Medical Grade

IEC Inlet Single Stage Power Line Filter

**RP180
MEDICAL GRADE FILTER
IEC INLET FROM 15 TO 20A**

ROHS COMPLIANT



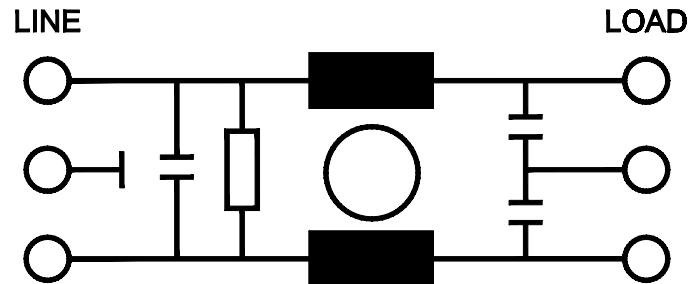
| SPECIFICATIONS | |
|------------------------|------------------|
| Operating Freq. | : 50/60Hz |
| Max. Operating Voltage | : 250V +10% |
| Ambient Temperature | : -25 to 40C |
| Climatic Category | : 25/100/21 |
| Hipot Rating (L-G) | : 2121VDC |
| Plastic Mtg Force | : 18 LBS |
| Terminals (-T) | : QD: 0.25 Tabs |
| Safety Approvals | : cURus, EN60939 |
| Typ. Weight, LBS (KG) | : 0.2 (0.1) |

| LEAKAGE CURRENT | | |
|-----------------|------------------|------------------|
| Y-cap, nF | mA, 120V/60Hz | mA, 250V/60Hz |
| 0 | 0 | 0 |
| .22 | 0.02 | 0.04 |
| .47 | 0.04 | 0.08 |
| 1 | 0.09 | 0.18 |

| PART NUMBER/ ORDERING | | | |
|-----------------------|--------------|------------------|----|
| RP180 | -X (Amps) | -Y (Ycap, nF) | -T |
| | 15 | 0 | QD |
| | 20 | .22 | |
| | | .47 | |
| | | 1 | |

Note: Use any combination of -Y with any -X (Amps) rating
e.g. RP180-6-1-QD (6Amps with 1nF Ycap)

SCHEMATIC

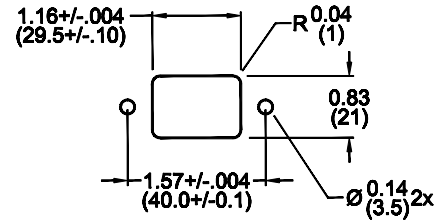
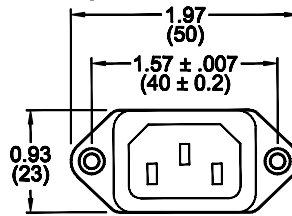


Reference purposes only.
Specifications are subject to change.
Consult factory to verify specifications.

RP180

Typical Insertion Loss, dB (50/50ohm) Mechanical Dimensions

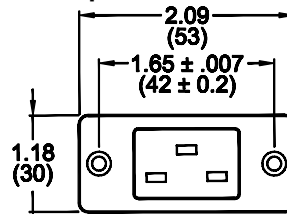
15 Amp



| 15 Amp | | | | | |
|------------|-----|----|-----|----|----|
| FREQ (MHz) | .15 | .5 | 1.0 | 10 | 30 |
| CM(dB) | 8 | 18 | 26 | 45 | 50 |
| DM(dB) | 10 | 18 | 22 | 50 | 50 |



20 Amp



| 20 Amp | | | | | |
|------------|-----|----|-----|----|----|
| FREQ (MHz) | .15 | .5 | 1.0 | 10 | 30 |
| CM(dB) | 10 | 20 | 26 | 45 | 55 |
| DM(dB) | 14 | 24 | 30 | 55 | 55 |



TYPICAL TOLERANCE: +/-0.02 (0.50)

Reference purposes only.
Specifications are subject to change.
Consult factory to verify specifications.