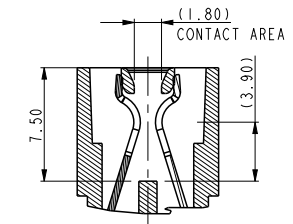
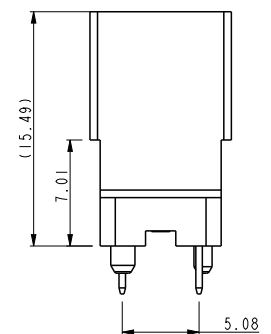
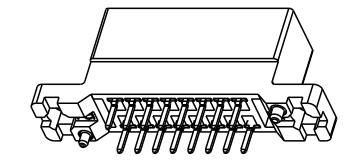
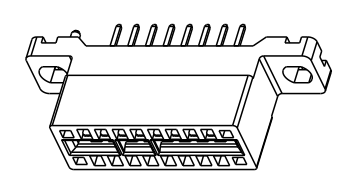
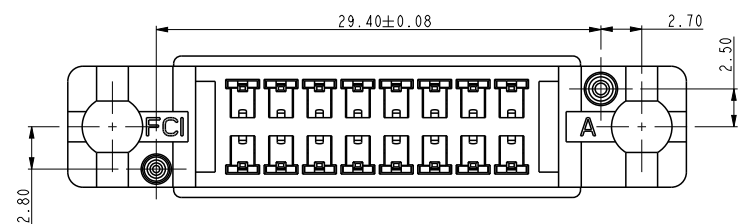
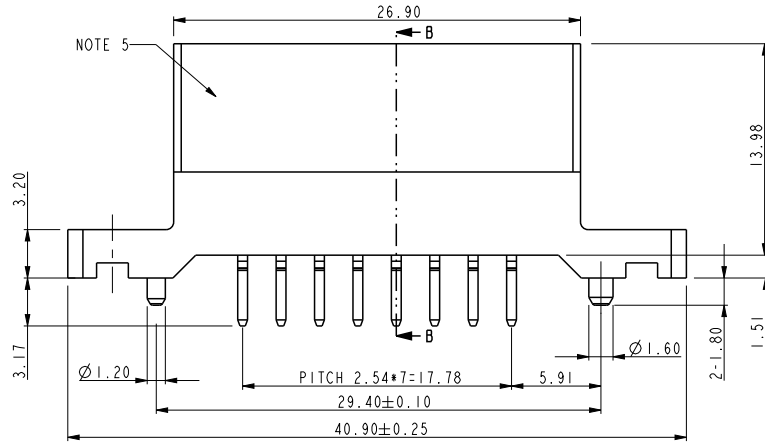
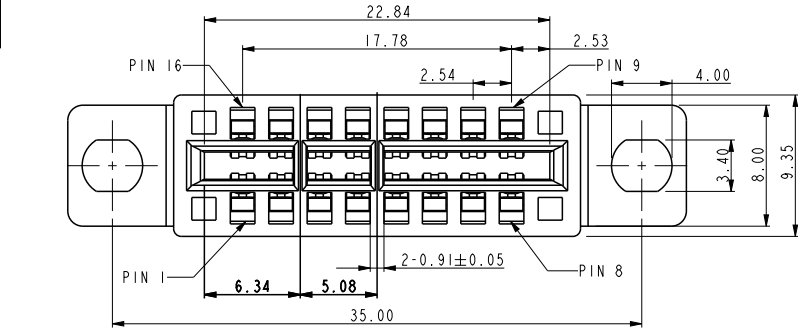


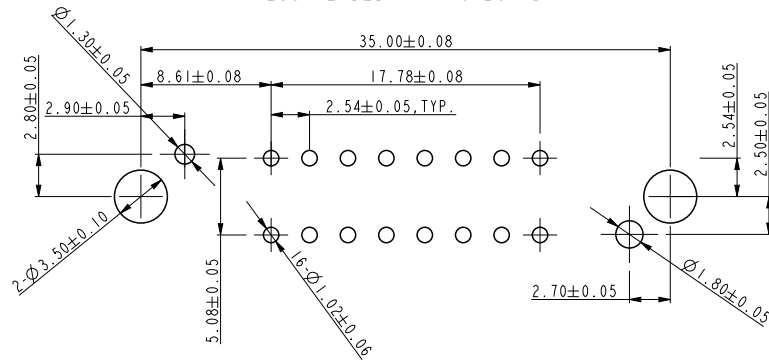
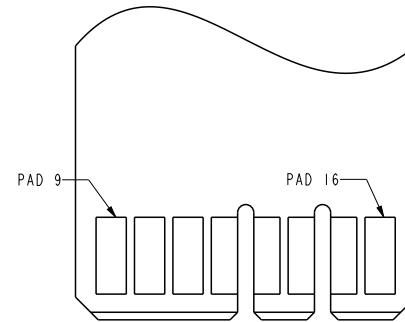
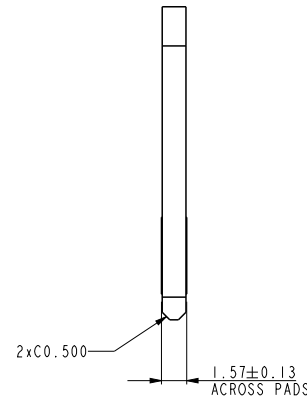
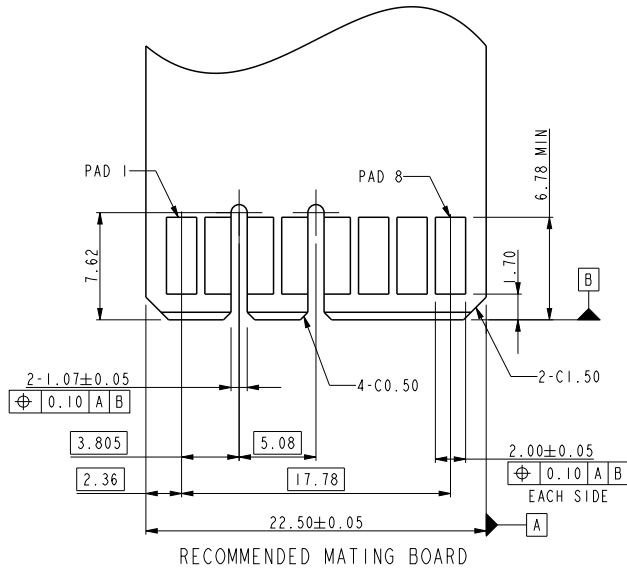
PRODUCT NO  
10046972-001LF



- NOTE:
- Material:  
HOUSING: HIGH TEMPERATURE THERMOPLASTIC,  
UL 94 V-0 FLAME RETARDANT.  
TERMINAL: HIGH CONDUCTIVITY COPPER ALLOY.  
PLATING SPEC AS BELOW:  
Ni 50u" UNDER PLATED.  
Au 30u" OVER CONTACT AREA. (ONE SIDE)  
Matte Tin 120u" OVER SOLDERING AREA.
  - PACKING SPEC. GS-14-937.
  - PRODUCT SPEC. GS-12-338.
  - PART NUMBER 10046972-001LF MEETS EUROPEAN UNION DIRECTIVE AND OTHER COUNTRY REGULATIONS AS DESCRIBED IN GS-22-008.  
THE HOUSING WILL WITHSTAND EXPOSURE TO 260°C PEAK TEMPERATURE FOR 10 SECONDS IN A WAVE SOLDER APPLICATION WITH A CIRCUIT BOARD.
  - PRODUCT MARKING ON HOUSING IN AREA SHOWN MEETS AFCI SPECIFICATION: GS-24-007.
  - A SYMBOL  $\triangle$  WILL BE NEXT TO ANY DIMENSION, VIEW, OR NOTE WHICH HAS BEEN MODIFIED WITH THE CURRENT DRAWING REVISION.

spec ref	*	dr	w wcdmin	2006/08/26	projection	MM ←→	size	A4	scale	1.000				
tolerance std	TOLERANCES UNLESS OTHERWISE SPECIFIED	eng	Sunny2 Liu	2016/05/05			ecn no	ELX-DG-22934-1						
		chr	Terris Liu	2016/05/20				rel level	Released					
surface	linear	0.X	±0.5	Amphenol FCI	title	product family	dwg no	10046972	rev	G				
		0.XX	±0.25								cat. no.	*	Product - Customer Drw	sheet 1 of 4
		0.XXX	±0.13											
	angular	0°	±°											

PRODUCT NO  
10046972-001LF



RECOMMENDED PC BOARD LAYOUT  
AND THE THICKNESS IS 2.36 mm

spec ref *		dr <a href="#">w wcadmin</a>	<a href="#">2006/08/26</a>	projection 	MM 	size A4	scale 1.000
tolerance std		eng <a href="#">Sunny2 Liu</a>	<a href="#">2016/05/05</a>			ecn no <a href="#">ELX-DG-22934-1</a>	
TOLERANCES UNLESS OTHERWISE SPECIFIED		chr <a href="#">Terris Liu</a>	<a href="#">2016/05/20</a>	product family		rel level <b>Released</b>	
surface ✓		appr <a href="#">Pei-Ming Zheng</a>	<a href="#">2016/05/24</a>	title <b>Amphenol FCi</b>		dwg no 10046972	rev <b>G</b>
linear		cat. no. *		Product - Customer Drw		sheet 2 of 4	
0.X ±0.5							
0.XX ±0.25							
0.XXX ±0.13							
angular 0° ±°							

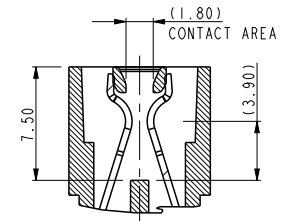
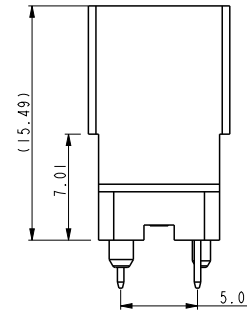
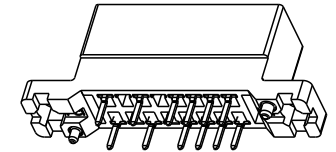
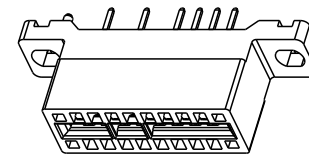
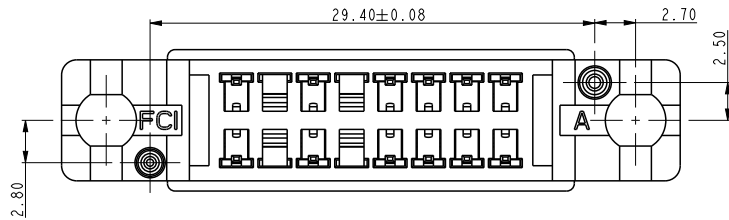
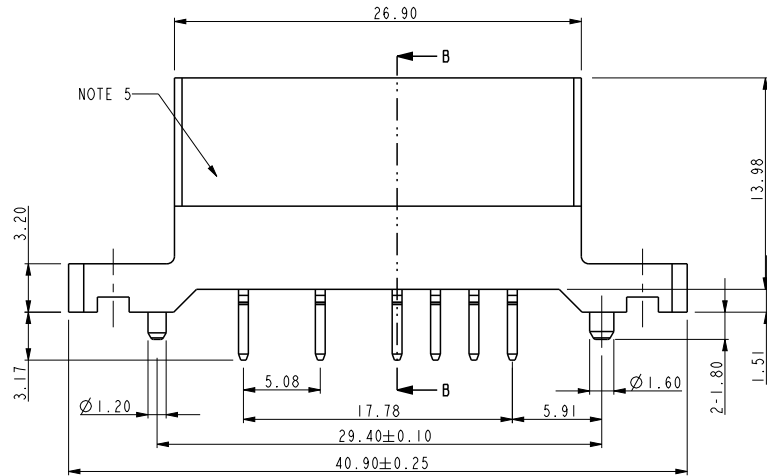
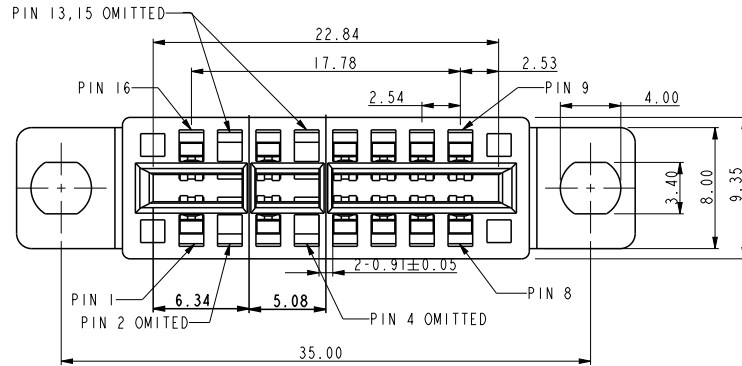
A

B

C

D

PRODUCT NO  
10046972-002LF



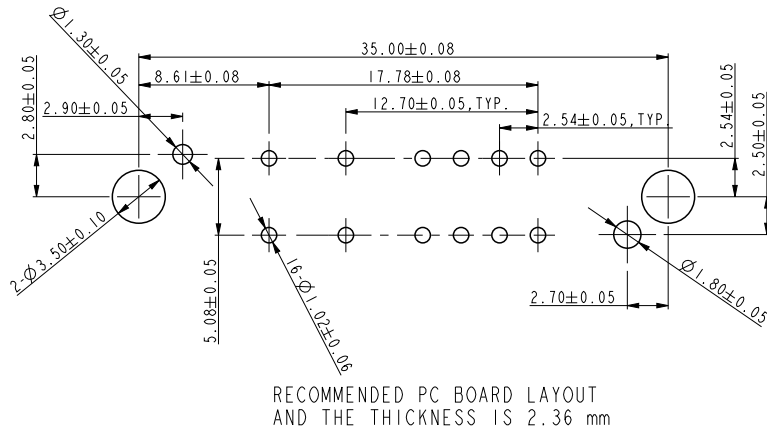
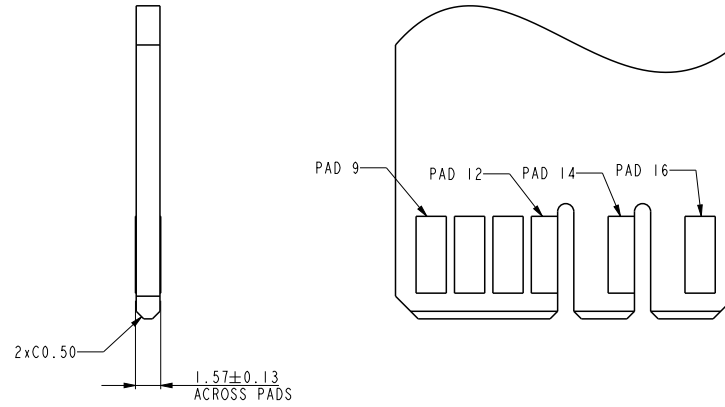
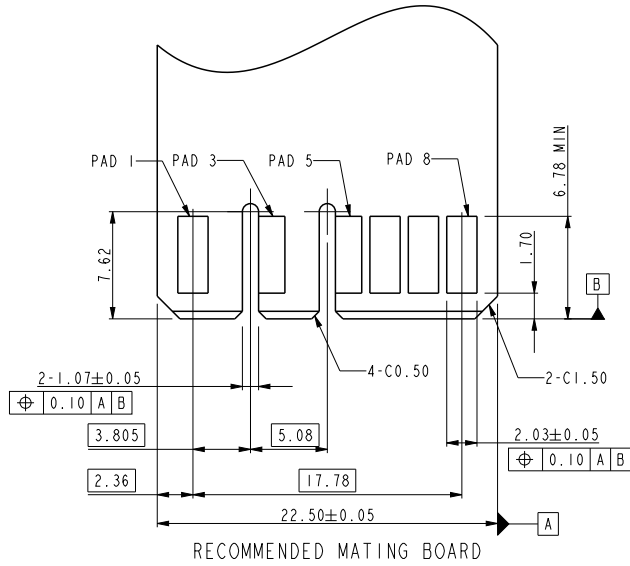
SECTION B-B

NOTE:

1. Material:  
HOUSING: HIGH TEMPERATURE THERMOPLASTIC,  
UL 94 V-0 FLAME RETARDANT.  
TERMINAL: HIGH CONDUCTIVITY COPPER ALLOY.  
PLATING SPEC AS BELOW:  
Ni 50u" UNDER PLATED.  
Au 30u" OVER CONTACT AREA.(ONE SIDE)  
Matte Tin 120u" OVER SOLDERING AREA.
2. PACKING SPEC. GS-14-937.
3. PRODUCT SPEC. GS-12-338.
4. PART NUMBER 10046972-001LF MEETS EUROPEAN UNION DIRECTIVE AND OTHER COUNTRY REGULATIONS AS DESCRIBED IN GS-22-008.  
THE HOUSING WILL WITHSTAND EXPOSURE TO 260°C PEAK TEMPERATURE FOR 10 SECONDS IN A WAVE SOLDER APPLICATION WITH A CIRCUIT BOARD.  
PRODUCT MARKING ON HOUSING IN AREA SHOWN MEETS AFCI SPECIFICATION: GS-24-007.
6. A SYMBOL WILL BE NEXT TO ANY DIMENSION, VIEW, OR NOTE WHICH HAS BEEN MODIFIED WITH THE CURRENT DRAWING REVISION.

spec ref	*	dr	w wcdmin	2006/08/26	projection	MM	size	A4	scale	1.000		
tolerance std	TOLERANCES UNLESS OTHERWISE SPECIFIED	eng	Sunny2 Liu	2016/05/05			ecn no		ELX-DG-22934-1			
		chr	Terris Liu	2016/05/20			rel level		Released			
		appr	Pei-Ming Zheng	2016/05/24	product family		rev		G			
surface	linear	0.X	±0.5	<b>Amphenol FCI</b>	title PEC VT WITH MOUNTING EARS 2X8P		dwg no 10046972		cat. no. Product - Customer Drw		sheet 3 of 4	
		0.XX	±0.25									
		0.XXX	±0.13									
	angular	0°	±°									

PRODUCT NO  
10046972-002LF



spec ref	*	dr	w wcadmin	2006/08/26	projection	MM	size	A4	scale	1.000											
tolerance std	TOLERANCES UNLESS OTHERWISE SPECIFIED	eng	Sunny2 Liu	2016/05/05			ecn no ELX-DG-22934-1														
		chr	Terris Liu	2016/05/20			rel level Released														
		appr	Pei-Ming Zheng	2016/05/24			product family														
surface	<table border="1"> <tr> <td>linear</td> <td>0.X</td> <td>±0.5</td> </tr> <tr> <td></td> <td>0.XX</td> <td>±0.25</td> </tr> <tr> <td></td> <td>0.XXX</td> <td>±0.13</td> </tr> <tr> <td>angular</td> <td>0°</td> <td>±°</td> </tr> </table>	linear	0.X	±0.5		0.XX	±0.25		0.XXX	±0.13	angular	0°	±°	<b>Amphenol FCI</b>		title PEC VT WITH MOUNTING EARS 2X8P		dwg no 10046972		rev <b>G</b>	
linear	0.X	±0.5																			
	0.XX	±0.25																			
	0.XXX	±0.13																			
angular	0°	±°																			
cat. no. *					Product - Customer Drw			sheet 4 of 4													