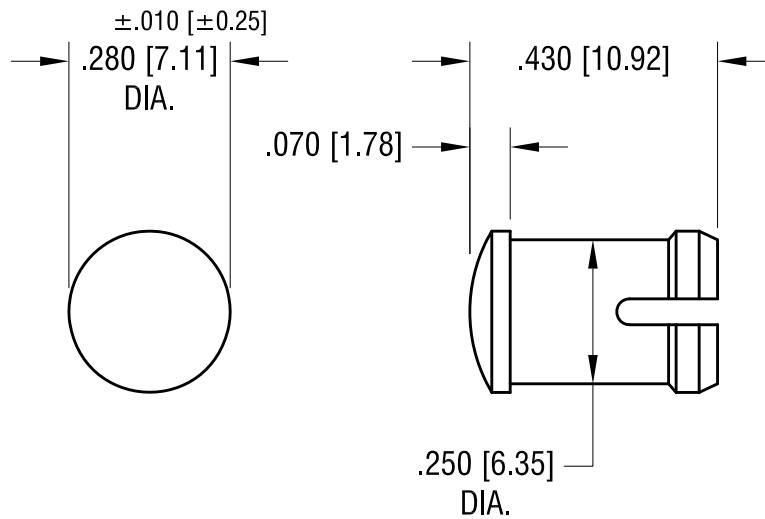


THIS DOCUMENT IS THE PROPERTY OF  
KEYSTONE ELECTRONICS CORP. AND  
SHALL NOT BE REPRODUCED, DISTRIBUTED  
OR USED AS A BASIS FOR MANUFACTURE  
WITHOUT PRIOR WRITTEN PERMISSION  
FROM KEYSTONE ELECTRONICS CORP.

**ACTUAL SIZE**



**NOTE:**

- 1. MOUNTING:**  $\pm .002$  [ $\pm 0.05$ ]  
MOUNTS IN A  $.250$  [ $6.35$ ] DIA. PANEL HOLE  
ON  $.375$  [ $9.50$ ] CENTER.  
PANEL THICKNESS  $.031$  [ $0.80$ ] TO  $.250$  [ $6.35$ ]  
PANEL HOLE SHOULD BE DEBURRED, BUT NOT CHAMFERED.
- 2. ASSEMBLY:**  
INSERT LENS THROUGH PANEL HOLE ,  
(FOR THIN PANEL LESS THAN  $.188$  [ $4.75$ ] TH'K,  
SLIDE CAT#8692 SPACER ON BACK OF LENS),  
AND INSERT LED INTO LENS

PART NO.	COLOR
8668	RED
8669	GREEN
8670	YELLOW
8671	CLEAR

DATE	DESCRIPTION	REV.
10.04.13	CHANGE AS PER ECN 13-079	B
2.18.04	CHANGE AS PER ECN 04-013	A

<b>KEYSTONE ELECTRONICS CORP.</b>			
www.keyelco.com • ASTORIA, N.Y. 11105-2017 • Tel (718) 956-8900			
PART NAME			
LED ROUND LENS CAP			
MATERIAL			
POLYCARBONATE			
FINISH		DRN BY	DATE
-		BOONE	2.9.96
		APP'D	SCALE
		LN	3X
TOLERANCES	INCH [MM]	CODE	DWG NO.
DECIMAL	$\pm .005$ [ $\pm 0.15$ ]	C	<b>8668-8671</b>
ANGULAR	$\pm 1^\circ$		
UNLESS OTHERWISE SPECIFIED			