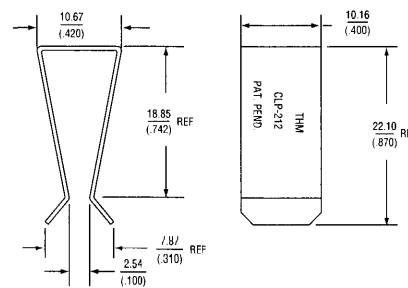


## SECONDARY CLIPS

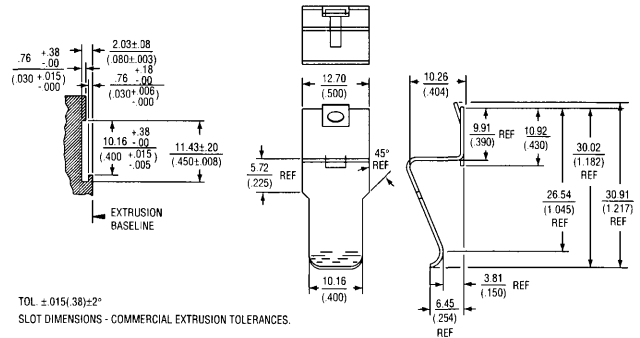
Secondary Clip Part Number	Transistor Case Style	Heat Sink Material Thickness mm (inches)
CLP-101	TO-220, TO-218, Multiwatt	1.27-2.03 (.050-.080)
CLP-201	TO-220	1.27-2.03 (.050-.080)
CLP-202	TO-220	2.29-3.18 (.090-.125)
CLP-203	TO-220	1.27-2.03 (.050-.080)
CLP-204	TO-220, TO-218	
CLP-206	TO-220, TO-218, Multiwatt	1.27-3.18 (.050-.125)
CLP-207	TO-220	1.27-2.03 (.050-.080)
CLP-211	TO-220, TO-218, Multiwatt	
CLP-212	TO-220, TO-218, Multiwatt	
CLP-214	TO-220, TO-218, Multiwatt	
CLP-215	TO-220, TO-218, Multiwatt	
4426 * , ♦	TO-220	
4525 * , ♦♦	TO-220	
4473 * , ♦	TO-218/TO-247	
4597 * , ♦♦	Multiwatt, TO-218/TO-247	

## CLIPS FOR EXTRUSIONS

## SECONDARY CLIPS



▲ CLP-212

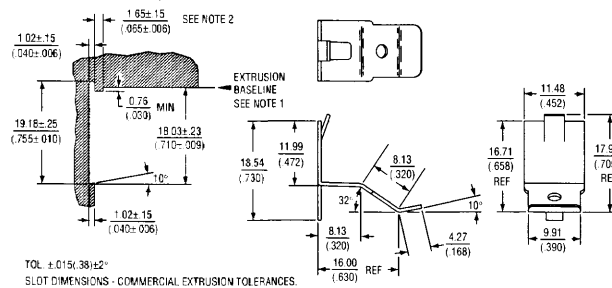


▲ CLP-214

### CLP-214, CLP-215: Patents Pending

- \* These clips fit the KL, KM, KP, KR, KV, KT, and YC extrusions.
- ♦ For easy and quick fitting. The stabilizing legs retain clip to heat sink to allow assembly prior to device fitment. Device can be removed and replaced without clip removal.
- ♦♦ Similar to the 4426 and 4473 clips but without the stabilizing legs, devices can therefore be placed closer together where space is at a premium. The 4597 clip is also suitable for the wider Multiwatt packages.

**FITTING** Assemble clip to the retaining rail by thumb pressure applied to the top/front of the clip – this will snap it firmly in place. Clips can be removed and re-used by gripping the clip immediately adjacent to the rail using long nosed pliers or similar, and twisting in an upward direction.

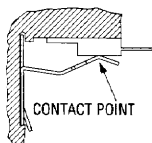


▲ KM75-1 + 4426 Clip

### Notes:

- (1) The baseline location relative to the clip attachment dimensions should be adjusted to allow for insulator thickness if an insulator is used.
- (2) Dimension may be increased as needed to position transistor as desired under clip contact point.

### ▲ CLP-215



▲ 4426



▲ 4525



▲ 4473



▲ 4597

- Dispenses insulators and Conducta-Cote™ pre-coated with thermal grease, eliminating the mess and contamination of hand coating.
- The dispenser keeps pace with your production—the next insulator is available as soon as one is removed.

**INSUL-COTE™  
AUTOMATED  
DISPENSER**

