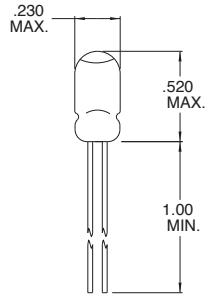
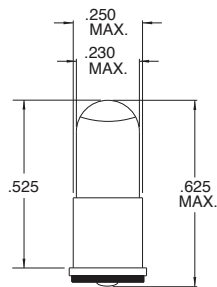


## TL-1 3/4 Wire Terminal Lens End



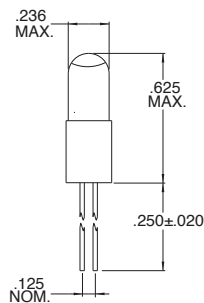
Part Number	Design Voltage	Amps	Spot Characteristic	Life Hours	Filament Type
CM8-374	2.5	.35	B*	3,000	C-2R
CM1750	2.5	.40	None	3,000	C-2R
CM1948	2.5	.40	None	7,500	C-2R
CM8426	5.0	.18	None	10,000	C-2R

## TL-1 3/4 Midget Flange Base Lens End



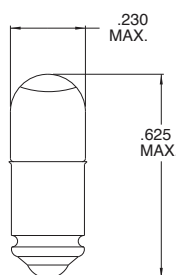
Part Number	Design Voltage	Amps	Spot Characteristic	Life Hours	Filament Type
CM8-3374	2.5	.35	B*	10,000	C-2R
CM8-443	5.0	.22	None	10,000	C-2R
CM3903	14.0	.08	None	1,000	C-2F

## TL-1 3/4 Bi-Pin Base (.125") Lens End



Part Number	Design Voltage	Amps	Spot Characteristic	Life Hours	Filament Type
CM761	2.5	.35	B*	10,000	C-2R
CM8261	2.5	.35	None	10,000	C-2R
CM7426	5.0	.22	None	10,000	C-2R

## TL-1 3/4 Midget Groove Base Lens End



Part Number	Design Voltage	Amps	Spot Characteristic	Life Hours	Filament Type
CM8-373	2.5	.35	B*	10,000	C-2R
CM3901	5.0	.18	None	10,000	C-2R
CM3904	14.0	.08	None	1,000	C-2F

\* Reference page 2-61 for applicable spot characteristics.