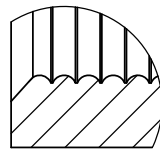
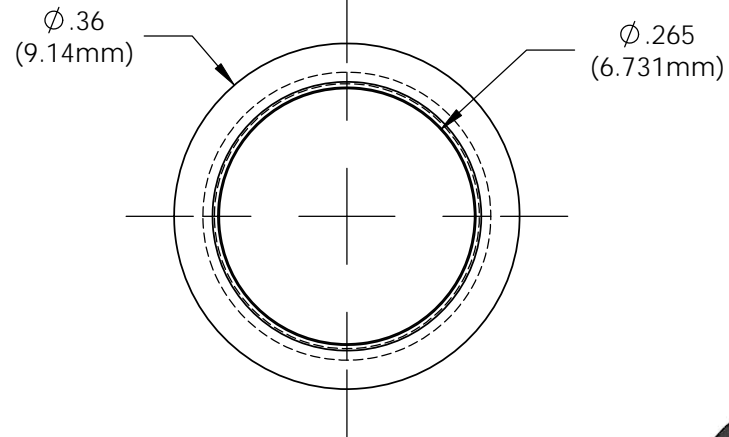
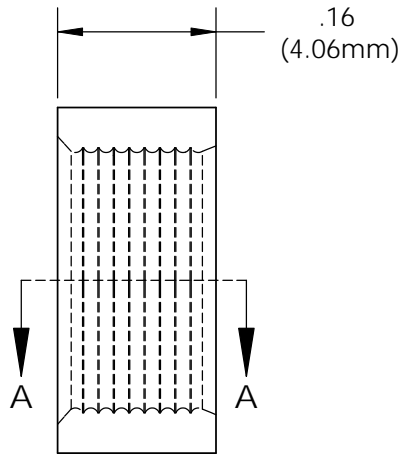


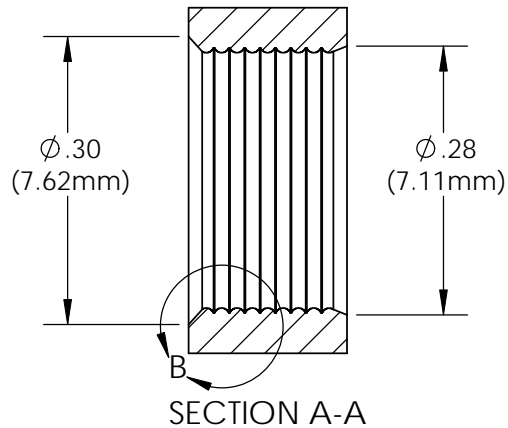
**NOTES:**

1. U.S. & Foreign Pat. Issued & Pend.

REVISIONS				
ECN #	REV	DESCRIPTION	DATE	INITIALS
	1	VARIOUS	7/94	JS
	2	WAS .275 IS .272	9/26/02	JS
	3	WAS .272 IS .265	10/17/02	JS
	001	REVISED PER ECR111009AZ01	2/11/10	KH
145	002	CHANGE IN MATERIAL	7/12/10	KH



DETAIL B  
SCALE 8 : 1



ISOMETRIC VIEW  
4:1

<small>UNLESS OTHERWISE SPECIFIED DIMENSIONS ARE IN INCHES: ANGLES ± 1°    DECIMALS .X ± .020                   .XX ± .010                   .XXX ± .005  BREAK ALL CORNERS AND SHARP EDGES .050 MAX</small>		MATERIAL		<b>VISUAL COMMUNICATIONS COMPANY</b> 190 Bosstick Boulevard, Suite 101 San Marcos, CA 92069 USA Phone (760) 560-1300 Fax (760) 560-1301 email vccsales@vcclite.com		
		POLYPROPYLENE, BLACK				
<small>THIRD ANGLE PROJECTION</small> 		FINISH		TITLE: <b>CLIPMOUNT RING RNG 268</b>		
		SEE NOTES				
<small>PROPRIETARY AND CONFIDENTIAL</small> <small>THE INFORMATION CONTAINED IN THIS DRAWING IS THE SOLE PROPERTY OF VISUAL COMMUNICATIONS COMPANY, INC. ANY REPRODUCTION IN PART OR AS A WHOLE WITHOUT THE WRITTEN PERMISSION OF VISUAL COMMUNICATIONS COMPANY, INC. IS PROHIBITED.</small>		APPROVALS	DATE	SIZE	DWG. NO.	REV
		DRAWN K.Howard	2/11/10	<b>A</b>	<b>RNG 268</b>	<b>002</b>
		CHECKED DPZ	2/22/10	SCALE: 5:1		SHEET 1 OF 1
		DO NOT SCALE DRAWING				