

4

3

2

1

THIS DRAWING IS UNPUBLISHED.

RELEASED FOR PUBLICATION

© COPYRIGHT

ALL RIGHTS RESERVED.

LOC

DIST

REVISIONS

P	LTR	DESCRIPTION	DATE	DWN	APVD
	B1	ECR-14-018880	08JAN2015	GK	HMR

REPLACED BY OCEAN STYLE APPLICATOR PART
NUMBER 2150459-2


FOR REPLACEMENT PARTS FOR APPLICATOR 1339616
REFER TO ADDITIONAL PAGE(S). SPARE PARTS KIT (IF LISTED)
WILL REMAIN AVAILABLE.

THE REPLACEMENT OCEAN STYLE APPLICATOR HAS THE
SAME TERMINATOR/PRESS INTERFACE AS APPLICATOR
1339616

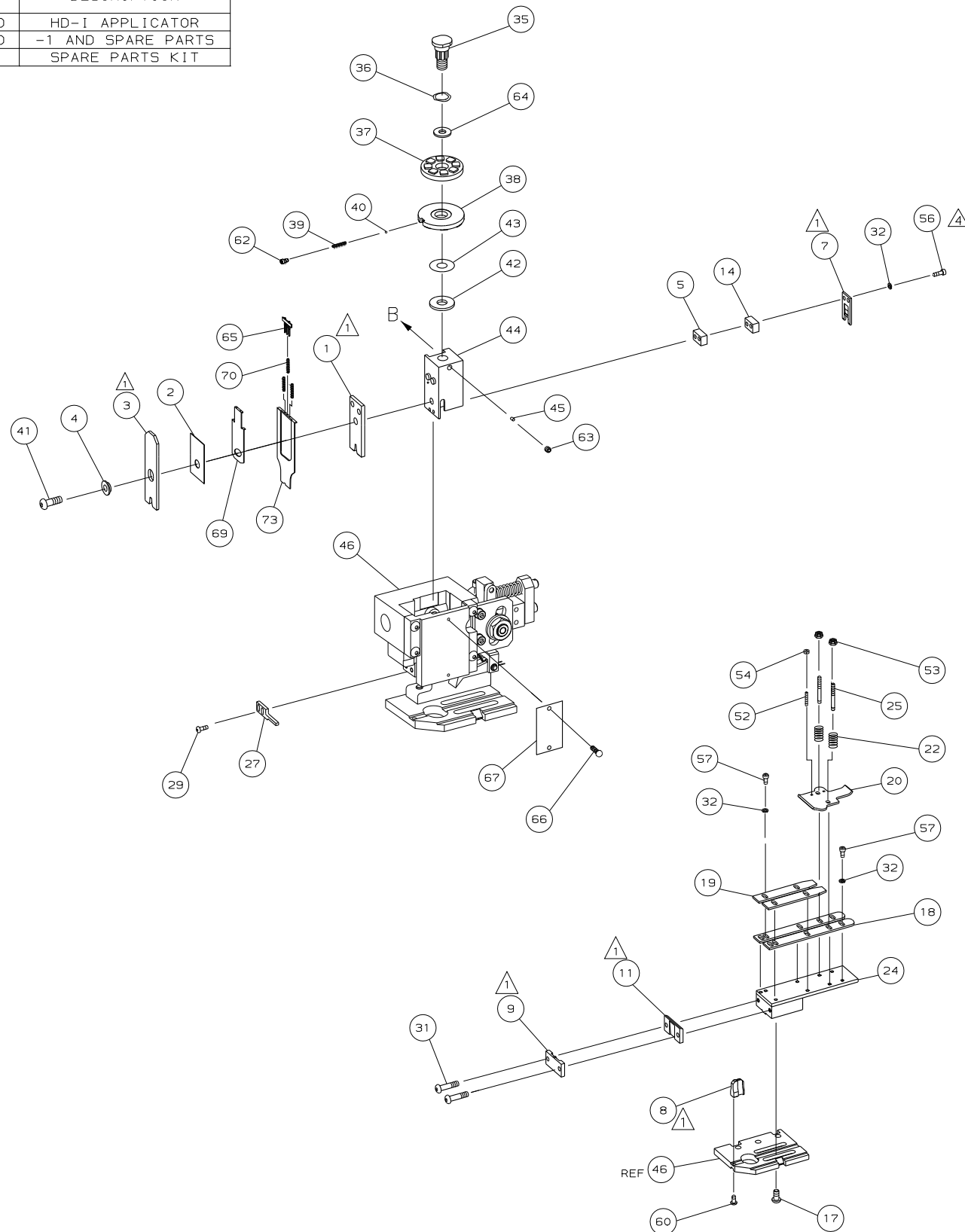
THIS DRAWING IS A CONTROLLED DOCUMENT.		DWN	GOPALAKRISHNA HV			
		CHK	RAGHAVENDRA			
		APVD	RAGHAVENDRA			
		PRODUCT SPEC				
		APPLICATION SPEC				
		WEIGHT				
		CUSTOMER DRAWING		SCALE	SHEET 1 OF 2	
				REV	B1	

TE Connectivity			
END FEED HD-I APPLICATOR			
SIZE	CAGE CODE	DRAWING NO	RESTRICTED TO
A3		©- 1339616	

DIMENSIONS:	TOLERANCES UNLESS OTHERWISE SPECIFIED:
	0 PLC ± 1 PLC ± 2 PLC ± 3 PLC ± 4 PLC ± ANGLES ± FINISH
MATERIAL	



- ① RECOMMENDED SPARE PARTS.
2. GREASE RAM, CAM, CAM FOLLOWER AND FEED ROD LIGHTLY.
3. LUBRICATE DAILY PER THE APPLICATOR INSTRUCTION SHEET SUPPLIED WITH THE APPLICATOR.
- ④ CUT TO LENGTH AT ASSY.



-	1	1	1490525-1	DEPRESSOR, WIRE	73
-	1	1	1339616	PRINT, APPLICATOR LOG SHEET	72
-	1	1	1338705-2	DOCUMENTATION PACKAGE	71
-	3	3	2-23147-2	SPRING, DEPRESSOR	70
-	1	1	1490524-2	SPACER, DEPRESSOR	69
					68
-	1	1	461264-1	PLATE, IDENTIFICATION	67
-	2	2	21017-2	SCR,DRIVE (#2X.19) ID PLATE	66
-	1	1	1424350-1	HOLDER, PIN, WIRED	65
-	1	1	986950-1	WASHER, FLAT PRECISION	64
-	1	1	3-18031-0	SCR,SKT SET(M6X6)RAM	63
-	1	1	18023-9	SCR,SKT CAP(M4X6)CP DSC	62
					61
-	1	1	18024-7	SCR,BHC(M4X10) ANVIL	60
					59
					58
-	6	6	1-18023-0	SCR,SHC(M4X8) STRIP GUIDE	57
-	2	2	1-18023-5	SCR,SHC(M4X25) SLUG BLADE	56
					55
-	2	2	18029-1	NUT, HEX (M3) DRAG	54
-	2	2	986965-1	NUT, HEX SL (M4) DRAG STUD	53
-	2	2	2-18032-2	SCR,SKT SET (M3X10) DRAG	52
					51
					50
-	1	1	18024-3	SCR,BHC(M3X10) CAM	49
					48
-	1	1	1338676-1	CAM, POST-FEED 30 & 40 mm ST	47
-	1	1	1338662-2	APPLICATOR, BASIC (SUBASSY)	46
-	1	1	690191-1	PLUG, NYLON	45
-	1	1	1320998-1	RAM	44
-	1	1	690125-1	WASHER, LAMINATED	43
-	1	1	690124-4	WASHER, RAM	42
-	1	1	2-18024-6	SCREW,BHC(M8X25) CRIMPER	41
-	1	1	23241-1	BALL, STEEL	40
-	1	1	2-22278-7	SPRING, COMPRESSION	39
-	1	1	1320922-1	DISC, INSULATION	38
-	1	1	354777-1	WIRE DISC, PLASTIC	37
-	1	1	22480-5	WASHER, SPRING	36
-	1	1	690212-1	POST, RAM	35
					34
					33
-	8	8	18025-2	WASHER, LOCK (M4) SHEAR BL	32
-	2	2	1-18024-0	SCR,BHC(M4X20) SHEAR PL	31
					30
-	2	2	18024-8	SCR,BHC(M4X12) STRIPPER	29
					28
-	1	1	690455-1	STRIPPER	27
					26
-	2	2	1320906-1	DRAG, STUD	25
-	1	1	1-1320995-6	STRIP GUIDE	24
					23
-	2	2	2-22281-6	SPRING, DRAG	22
					21
-	1	1	1338665-1	DRAG, STOCK	20
-	2	2	1338664-1	GUIDE, UPPER STRIP	19
-	2	2	1338663-6	GUIDE, LOWER STRIP	18
-	4	4	1-18024-8	SCR,BHC(M6X12) STRIP GD PL	17
					16
					15
-	1	1	2-240641-6	SPACER, SLUG BLADE	14
					13
					12
-	1	1	1-240644-7	PLATE, REAR SHEAR	11
					10
-	1	1	5-690482-1	PLATE, FRONT SHEAR	9
1	2	1	1333223-7	ANVIL	8
-	1	1	690474-4	BLADE, SLUG	7
					6
-	1	1	240641-2	SPACER, SLUG BLADE	5
-	1	1	238009-1	SPACER, BLOCK CRIMPER	4
1	2	1	6-683453-8	CRIMPER, INSULATION	3
-	1	1	455888-4	SPACER, CRIMPER	2
1	2	1	456414-5	CRIMPER, WIRE	1

VIEW B

POST-FEED 40 mm STROKE

REF

44

47

49

LOC	A
DIST	66

LEADMAKER OR BENCH G

ROTATED 180°

POST-FEED 30 mm STROKE

REF

44

47

49

K TERMINATOR BENCH MACHINE

		DIMENSIONS: mm (INCHES)		MATERIAL		HT TR		FIN	
		DO NOT SCALE PRINT.							
		TOLERANCES UNLESS OTHERWISE SPECIFIED.		DR 04FEB02 APP 04FEB02					
		1 PLC DEC ±		M.C.LIFFORD		F. BACKHURST			
		2 PLC DEC ±		CHK -		REL 13MAR02		AMP INCORPORATED	
		3 PLC DEC ±				L.LOFTHOUSE		HARRISBURG, PA 17105-3608	
		ANGLES ±		NAME		END FEED HD-I APPLICATOR			
B		ECR-05-015248		TE		MACHINE REF			
A		SEE ECN 015A-0177-02		LJL MAR02		HD-I APPL			
P F LTR	REVISION RECORD		APP	DATE	SCALE -		DWG NO	1339616	SHEET 1 OF 1
3					CAGE CODE 00779		CUSTOMER AND ASSEMBLY DRAWING		REV B
									RESTRICTED TO -