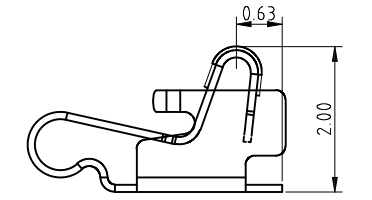
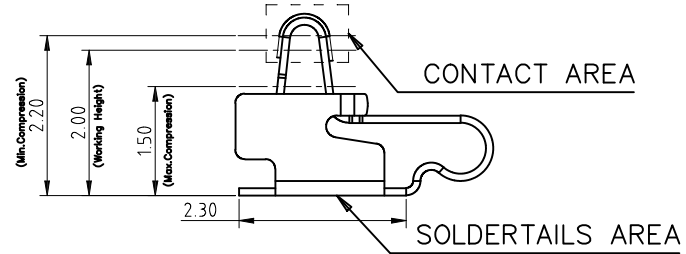
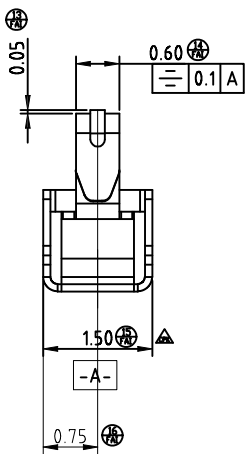
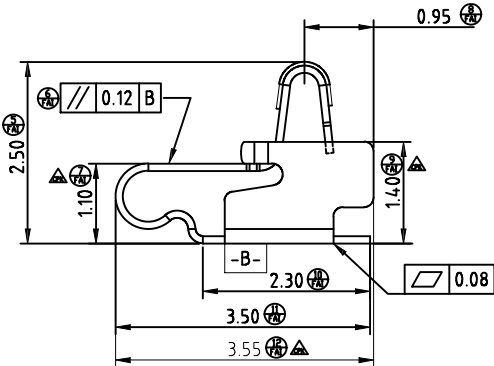
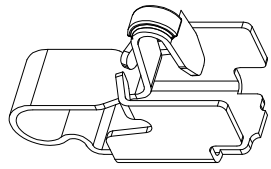
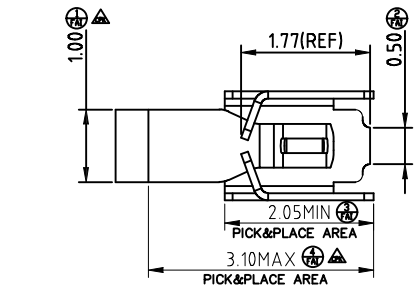
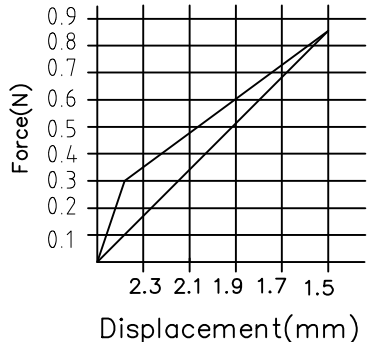


MD	Description	Please follow Pulse Limits for the hazardous substances (RoHS, halogens) in the document "Pulse Hazardous Substances (HS) Limits (RPGE002-03)" and "Vendor Survey Questionnaire, Material Composition (LDM-SAF-L0040)".	Reliability Test Spec according to WIHS7.5.33 (Reliability Test Working Instruction) Default test standard is Test Standard A if no definition			
P3	Change the Logo					



STATE AT WORKING HIGHT 2.00



RECOMMENDED PCB LAYOUT
DEFAULT TOLERANCE IS ±0.05MM

*Normal tolerance ±0.1mm

- NOTES:UNLESS OTHERWISE SPECIFIED
1. MATERIAL: Copper Alloy
THICKNESS 0.10±0.01mm
 2. NO CRACK APPEARS ON CONTACT BALL SHAPE.
 3. NO LINES APPEARS ON BENDING AREA.
 4. ALL UNSPECIFIED RADII TO BE 0.05 MAXIMUM .
 5. BURR:0.03MAX;CUMBER:1.5MM MAX/500MM; TWIST:20°/500MM.
 6. PRE-LOAD FORCE:0.40N ON CONTACT POINT
 7. PLATING: 10u"MIN GOLD PLATING ON CONTACT AREA,
3u"MIN GOLD PLATING ON SOLDER AREA,
50u" MIN NICKEL PLATING OVER ALL

Confidential
This is a proprietary information of Pulse Suzhou.
No reproduction/copying is allowed without permission.

Functional Characteristics Key (Cpk requirement : Cpk) >
 ● Process Capability Studies required(total pcs)
 ● Ongoing Statistical Process Control Required (total pcs)
 ● Critical dimension need to be measured, no CPK requirement (total pcs)

- .X± 0.15
- .XX± 0.10
- .XXX± 0.05
- X:± 5°

PULSE (SUZHOU) WIRELESS PRODUCTS CO.LTD.		THIRD ANGLE PROJECTION		SHEET NUMBER 1 / 1					
 99 HUOJU RD. SUZHOU NEW DISTRICT 215009 P.R.CHINA		SCALE 4,000		GENERAL TOLERANCE					
				CUSTOMER NUMBER					
PRODUCT(S) SW0183N		DESIGN JACKIE JUN-28-18		CHECKED MARK Nov-22-17		APPROVED JAMES Nov-22-17		P3 March-07-19 CHRIS	
ITEM TX80104-001(CLIP)		DOCUMENT NUMBER SW0183N		PART VERSION P01		DOCUMENT VERSION P3		P2 Oct-26-18 Chris P1 JUN-28-18 JACKIE MOD DATE NAME	