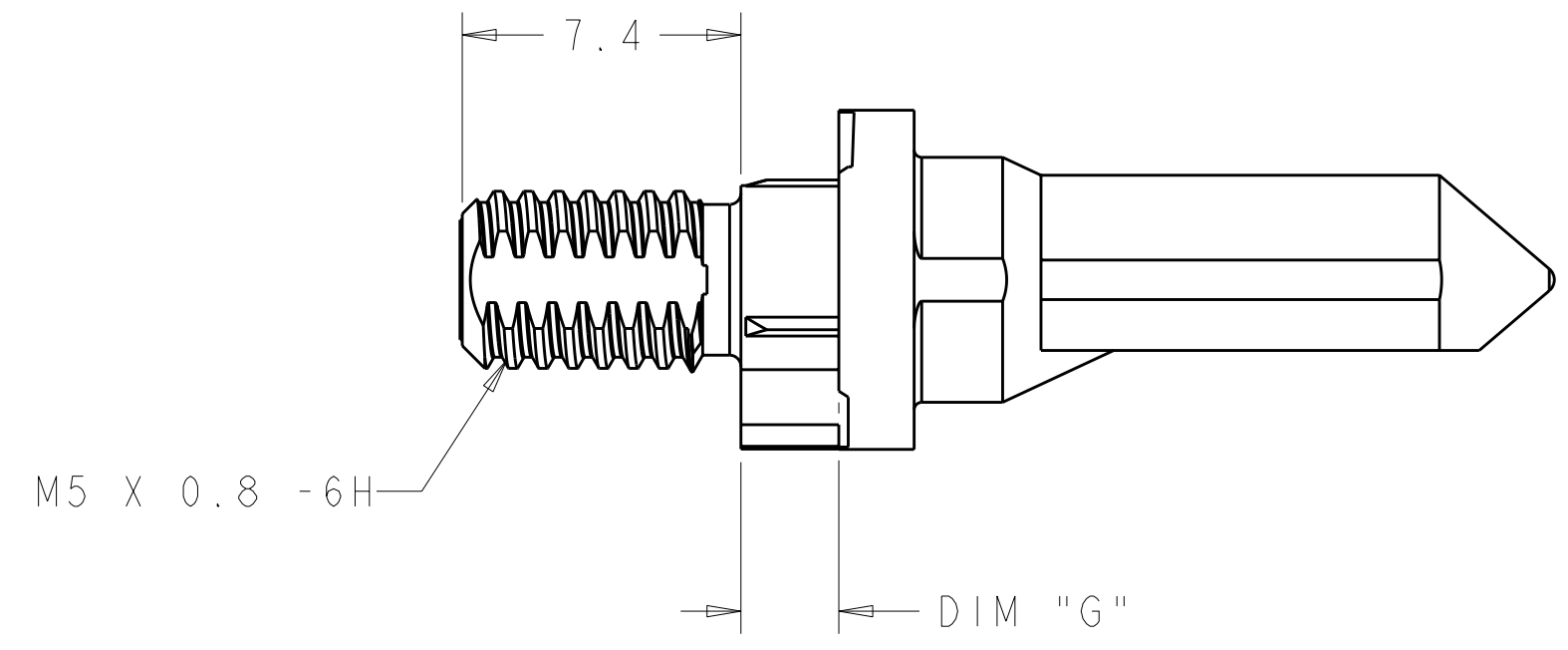
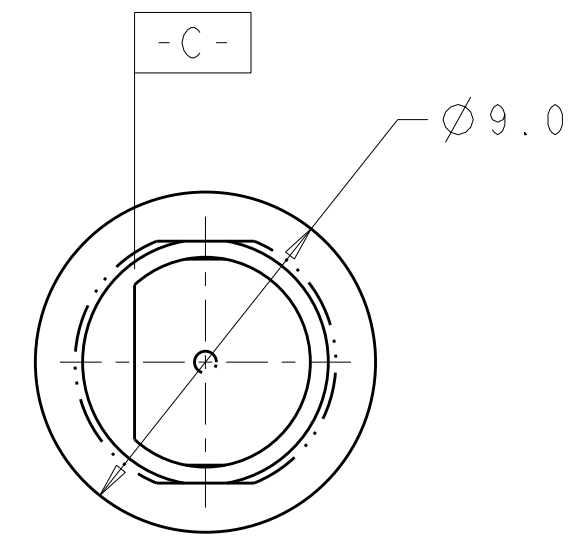
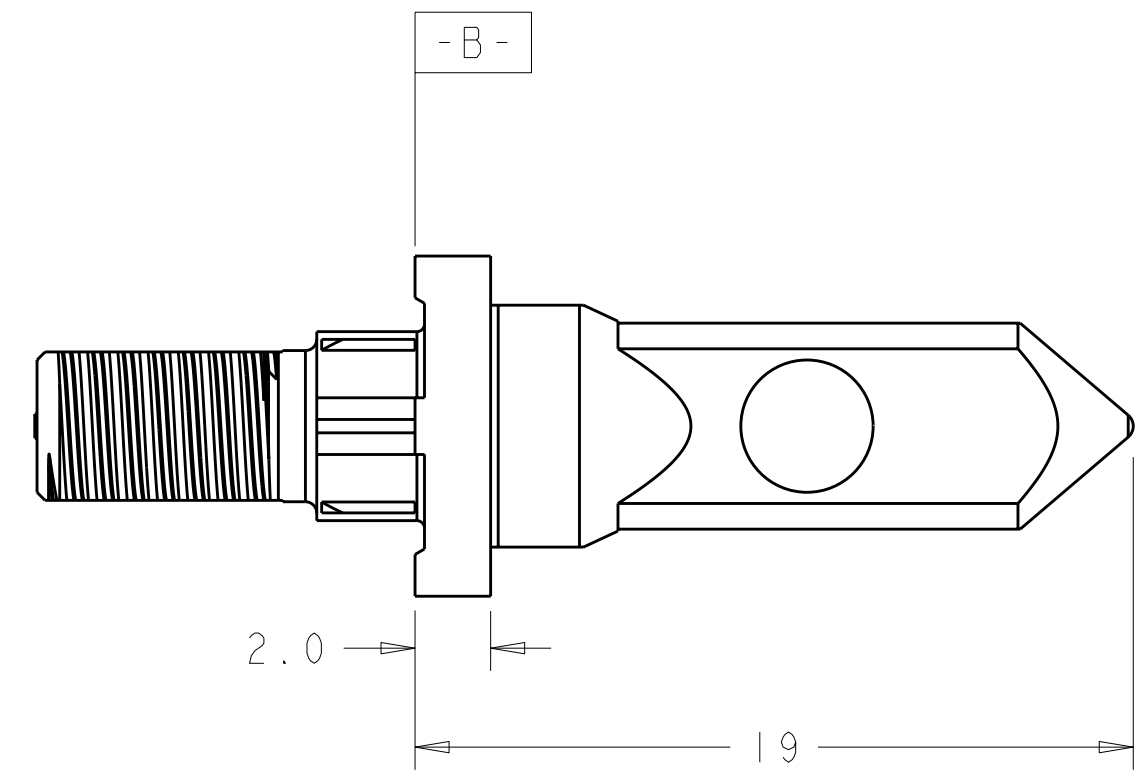
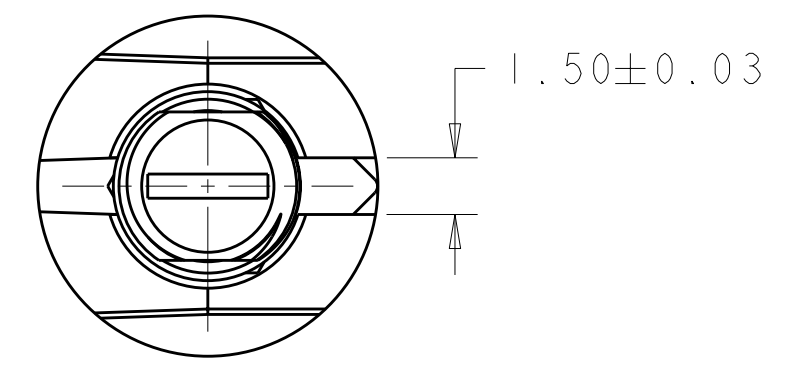


THIS DRAWING IS UNPUBLISHED. RELEASED FOR PUBLICATION 20  
 © COPYRIGHT 20 BY - ALL RIGHTS RESERVED.

| LOC | DIST | REVISIONS |     |             |           |     |      |
|-----|------|-----------|-----|-------------|-----------|-----|------|
| CG  | 00   | P         | LTR | DESCRIPTION | DATE      | DWN | APVD |
|     |      |           | A   | RELEASED    | 04AUG2011 | BC  | AS   |



- 1 KEY HOLE ORIENTATION (DIM A) PER MATING GUIDE MODULE PART NUMBER TABLE (ORIENTATION SHOWN ON PCB LAYOUT IS FOR 1-1410353-2).
- 2 ANNULAR RING PLATED AROUND GUIDE PIN MOUNTING HOLE ON TOP AND BOTTOM SIDE OF BOARD.
- 3 FINISH:  
3.81µm MINIMUM SILVER IN CONTACT AREA OVER NICKEL OVER COPPER ALL OVER.
- 4 MATERIAL: ZINC ALLOY.

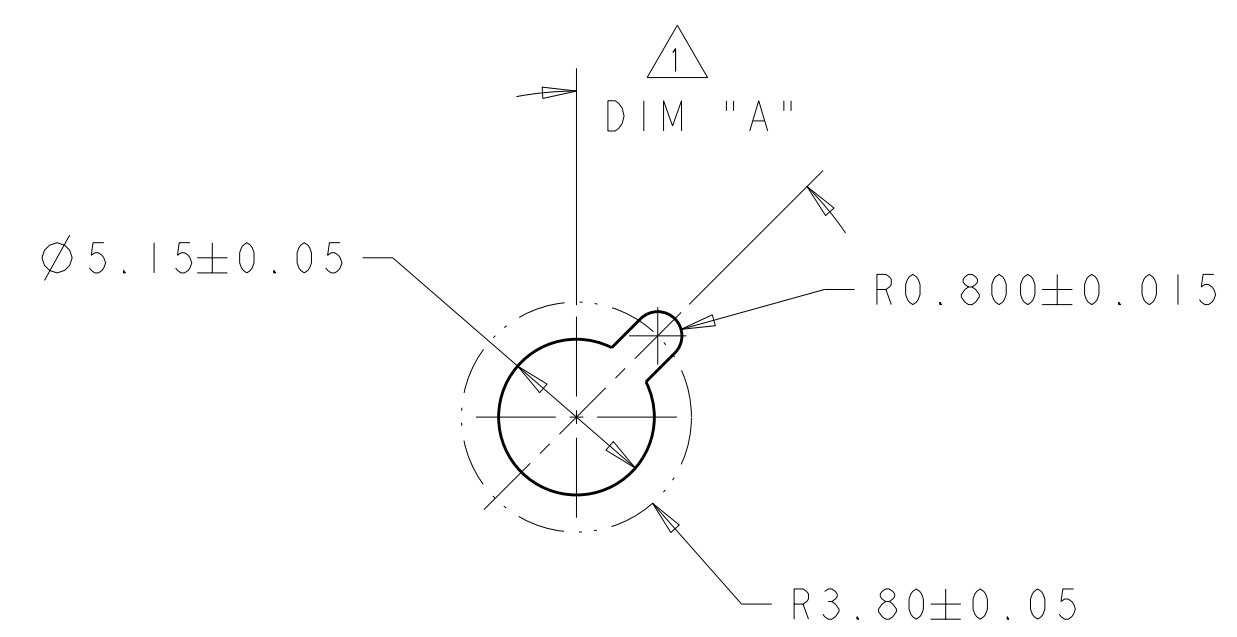


|        |         |             |
|--------|---------|-------------|
| 3      | 5.70    | 1-1410355-4 |
| 3      | 4.20    | 1-1410355-3 |
| 3      | 2.60    | 1-1410355-2 |
| FINISH | DIM "G" | PART NUMBER |

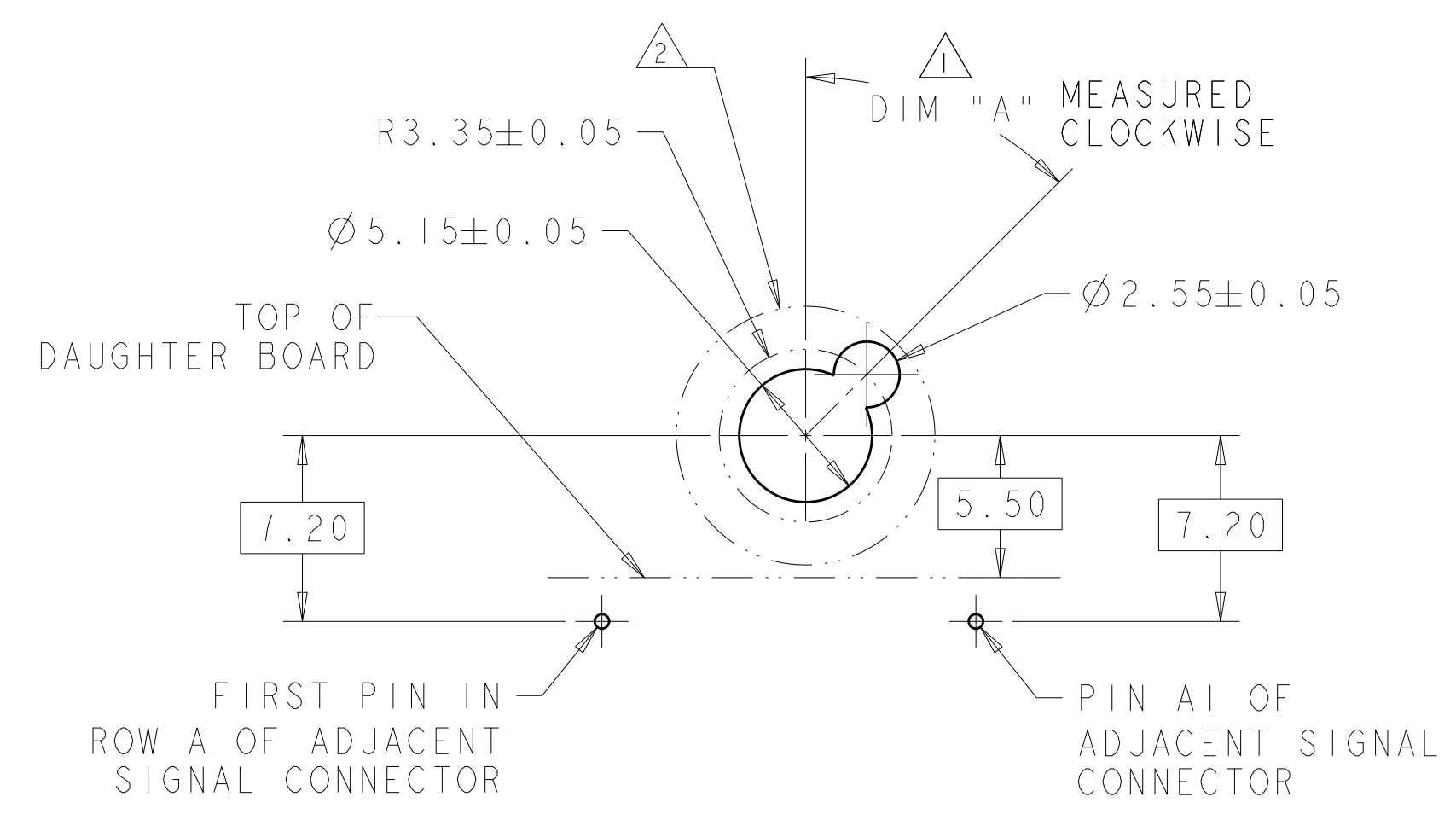
|   |   |                                |  |                    |                       |                    |
|---|---|--------------------------------|--|--------------------|-----------------------|--------------------|
| THIS DRAWING IS A CONTROLLED DOCUMENT.  |   | DWN<br>B. CARBO<br>04AUG2011   | TE Connectivity  |                    |                       |                    |
| DIMENSIONS:<br>mm   |   | CHK<br>A. SHARPE<br>04AUG2011  |  |                    |                       |                    |
| TOLERANCES UNLESS OTHERWISE SPECIFIED:  |   | APVD<br>A. SHARPE<br>04AUG2011 | NAME<br>KEYED GUIDE PIN, DIE CAST BACKPLANE CONNECTOR, MULTIGIG, THREADED POST |                    |                       |                    |
| 0 PLC ±<br>1 PLC ±0.5<br>2 PLC ±0.13<br>3 PLC ±0.013<br>4 PLC ±<br>ANGLES ±<br>FINISH ± |   | PRODUCT SPEC<br>108-2072       | SIZE<br>A2   | CAGE CODE<br>00779 | DRAWING NO<br>1410355 | RESTRICTED TO<br>- |
| MATERIAL<br>4   | - | APPLIC. SPEC<br>114-13056      | SCALE<br>5:1   | SHEET<br>1         | OF<br>2               | REV<br>A           |
| CUSTOMER DRAWING  |   | WEIGHT<br>-                    |  |                    |                       |                    |

THIS DRAWING IS UNPUBLISHED. RELEASED FOR PUBLICATION 20  
 © COPYRIGHT 20 BY - ALL RIGHTS RESERVED.

| LOC | DIST | REVISIONS   |             |     |      |
|-----|------|-------------|-------------|-----|------|
| P   | LTR  | DESCRIPTION | DATE        | DWN | APVD |
| CG  | 00   | -           | SEE SHEET 1 | -   | -    |
|     |      |             |             |     |      |
|     |      |             |             |     |      |



ALTERNATE PCB LAYOUT FOR GUIDE POST  
 SCALE 4:1



TIER 2 GUIDE PIN FOOTPRINT  
 (20.3mm SIGNAL MODULES)  
 SCALE 4:1

|                       |         |                     |
|-----------------------|---------|---------------------|
| 3                     | -       | 1-1410353-9         |
| 3                     | 315°    | 1-1410353-8         |
| 3                     | 270°    | 1-1410353-7         |
| 3                     | 90°     | 1-1410353-3         |
| 3                     | 45°     | 1-1410353-2         |
| 3                     | 0°      | 1-1410353-1         |
| FINISH                | DIM "A" | 20.3mm GUIDE MODULE |
| MATING GUIDE MODULE 1 |         |                     |

|   |  |                                |  |                    |                        |                    |
|---|--|--------------------------------|--|--------------------|------------------------|--------------------|
| THIS DRAWING IS A CONTROLLED DOCUMENT.  |  | DWN<br>B. CARBO<br>04AUG2011   | TE Connectivity  |                    |                        |                    |
| DIMENSIONS:<br>mm   |  | CHK<br>A. SHARPE<br>04AUG2011  |  |                    |                        |                    |
| TOLERANCES UNLESS OTHERWISE SPECIFIED:  |  | APVD<br>A. SHARPE<br>04AUG2011 | NAME<br>KEYED GUIDE PIN, DIE CAST BACKPLANE CONNECTOR, MULTIGIG, THREADED POST |                    |                        |                    |
| 0 PLC ±<br>1 PLC ±0.5<br>2 PLC ±0.13<br>3 PLC ±0.013<br>4 PLC ±<br>ANGLES ±<br>FINISH 3 |  | PRODUCT SPEC<br>108-2072       | SIZE<br>A2   | CAGE CODE<br>00779 | DRAWING NO.<br>1410355 | RESTRICTED TO<br>- |
| MATERIAL 4  |  | APPLICATION SPEC<br>114-13056  | SCALE 1:1  |                    | SHEET 2 OF 2           | REV A              |
|   |  | WEIGHT<br>-                    | CUSTOMER DRAWING   |                    |                        |                    |