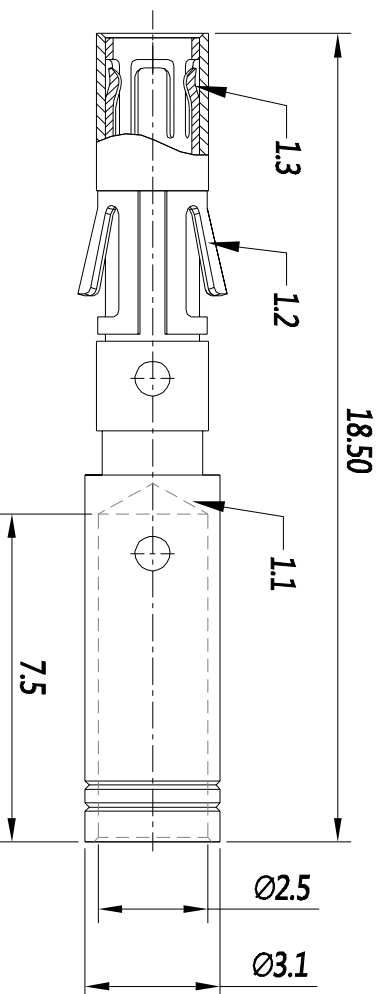


REVISIONS				
REV	ECO	DESCRIPTION	DATE	BY APPR
B1	-	RELEASED DRAWING	JULY-1-2014	BEN TOMMY



- NOTES : (UNLESS OTHERWISE SPECIFIED)
- MATERIAL :
 - CONTACT BODY : COPPER ALLOY.
 - POSITIONING CLIP : COPPER ALLOY.
 - CROWN CONTACTS : COPPER ALLOY.
 - SPECIFICATIONS :
 - CURRENT RATING : 13A(MAX).
 - TERMINATION TYPE : CRIMPING.
 - WIRE RANGE : 16~14AWG.
 - SUITABLE SOCKET TYPE : MP14M23xx.
 - ROHS COMPLIANT.
 - ALL DIMENSIONS ARE FOR REFERENCE USE ONLY.

P/N	CONTACT PLATING(MATING AREA)
MS14M23T	TIN PLATING OVER NICKEL.
MS14M23S	SILVER PLATING OVER NICKEL.
MS14M23F	GOLD FLASH PLATING OVER NICKEL.
MS14M23G10	10µ" GOLD PLATING OVER NICKEL.
MS14M23G15	15µ" GOLD PLATING OVER NICKEL.
MS14M23G30	30µ" GOLD PLATING OVER NICKEL.

QUANTITY	PART NUMBER	DESCRIPTION	ITER
MATERIALS LIST			

UNLESS OTHERWISE SPECIFIED		SIGNATURES		DATE	
1) All dimensions are in millimeters.	2) Tolerances are as indicated.	DRAWN: BBI	DATE: JULY-2014		
1) Pl. DEC 20 08	1) Pl. DEC 20 08	DESIGNED: Andrew St			
2) Pl. DEC 20 08	2) Pl. DEC 20 08	ENGINEER:			
3) Note reference =	3) Note reference =	APPROVAL:			
MATERIAL SPECIFICATIONS:		CUSTOMER:			

PROCESS SPECIFICATIONS:		THIS DRAWING IS SUPPLIED FOR		SIZE		TYPE		DWG NO.		REVISION	
NEXT ASST.		SPECIFICATIONS AND PERFORMANCE DATA		B		C-		MS14M23xx		B1	
		THE DRAWING IS FOR THE PRODUCTION OF		SCALE: NONE						SHEET 1 OF 1	
		REPRODUCTION AND ALL RIGHTS RESERVED. ALL									
		MANUFACTURING VARIATION									

ECO-MATE SOCKET CONTACT MACHINE, 16-14AWG, SIZE 16

Amphenol

Sine Systems - www.amphenol-sine.com
44724 Monkey Drive
Clinton Township, MI 48038