

## Sleeve housing - VC-K-T4-Z-M25 - 1852974

Please be informed that the data shown in this PDF Document is generated from our Online Catalog. Please find the complete data in the user's documentation. Our General Terms of Use for Downloads are valid (<http://phoenixcontact.com/download>)



Sleeve housing, plastic, with metric cable outlet, locking screws with cylinder head, type: VC4, cable screw connection: M25

### Product Features

- Seals with two cable entries are available
- Angled cable outlet so the cable can be routed as desired, from the side and straight



### Key Commercial Data

Packing unit	1 pc
Minimum order quantity	5 pc
GTIN	 4 017918 970840
Weight per Piece (excluding packing)	69.0 g
Custom tariff number	85472000
Country of origin	Poland

### Technical data

#### Dimensions

Height	75 mm
--------	-------

#### Ambient conditions

Degree of protection	IP65
Ambient temperature (operation)	-40 °C ... 80 °C

#### General

Note	When using fiber optics, the bending radii of the cable manufacturers must be observed.
Type	VC4

# Sleeve housing - VC-K-T4-Z-M25 - 1852974

## Technical data

### General

Degree of protection	IP65
Flammability rating according to UL 94	V0
Locking type	Screw locking, cylinder head
Fixing screws	M4
Tightening torque, mounting screw	1.5 Nm $\pm$ 0.3 Nm
Type of the screw connection	M25
Pg screw connection	none
Cable exit	Angled
Housing material	Polyamide
Seal material	EPDM
Ambient temperature (operation)	-40 °C ... 80 °C

### Standards and Regulations

Flammability rating according to UL 94	V0
--	----

## Classifications

### eCl@ss

eCl@ss 4.0	27140816
eCl@ss 4.1	27140816
eCl@ss 5.0	27371205
eCl@ss 5.1	27371205
eCl@ss 6.0	27371205
eCl@ss 7.0	27371205
eCl@ss 8.0	27440202
eCl@ss 9.0	27440202

### ETIM

ETIM 2.0	EC000437
ETIM 3.0	EC000437
ETIM 4.0	EC000437
ETIM 5.0	EC000437

### UNSPSC

UNSPSC 6.01	31261501
UNSPSC 7.0901	31261501
UNSPSC 11	31261501
UNSPSC 12.01	31261501

## Sleeve housing - VC-K-T4-Z-M25 - 1852974

### Classifications

#### UNSPSC

UNSPSC 13.2	31261501
-------------	----------

### Approvals

#### Approvals

#### Approvals

#### EAC

#### Ex Approvals

#### Approvals submitted

#### Approval details

EAC
-----

### Accessories

#### Accessories

#### Full screw connection

#### Cable gland - HC-K-KV-M25(11-17) - 1690639



Plastic screw connection up to 5 bar, thread length: 8 mm, cable diameter: 11 - 17 mm, WAF 29, screw connection: M25

#### Marking label - VC-BZS WH - 1852875

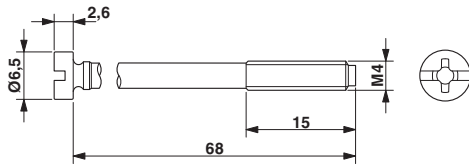


Marker labels, unprinted, 5-section, for individual labeling with M-PEN or CMS system, white

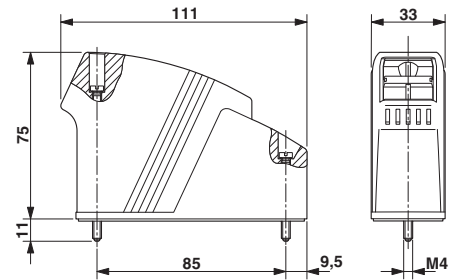
## Sleeve housing - VC-K-T4-Z-M25 - 1852974

### Drawings

Dimensional drawing



Dimensional drawing



Dimensional drawing

