

# Customer Information Sheet

DRAWING No.: R25-300XX02

SHEET 2 OF 2

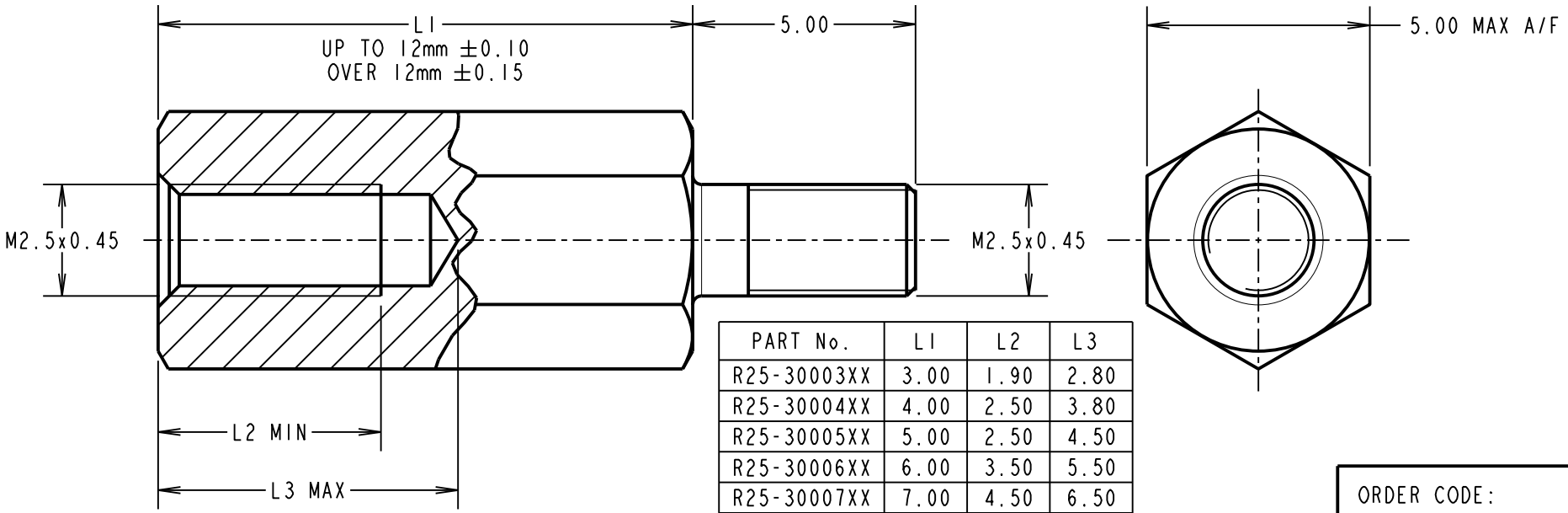
IF IN DOUBT - ASK



NOT TO SCALE

THIRD ANGLE PROJECTION

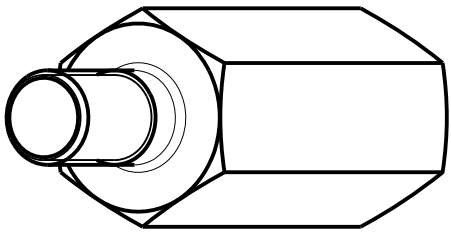
ALL DIMENSIONS IN mm



PART No.	L1	L2	L3
R25-30003XX	3.00	1.90	2.80
R25-30004XX	4.00	2.50	3.80
R25-30005XX	5.00	2.50	4.50
R25-30006XX	6.00	3.50	5.50
R25-30007XX	7.00	4.50	6.50
R25-30008XX	8.00	5.00	6.73
R25-30009XX	9.00		
R25-30010XX	10.00		
R25-30011XX	11.00		
R25-30012XX	12.00		
R25-30013XX	13.00		
R25-30014XX	14.00		
R25-30015XX	15.00		
R25-30016XX	16.00		
R25-30017XX	17.00		
R25-30018XX	18.00		
R25-30020XX	20.00		

ORDER CODE:  
**R25-300XX02**  
LENGTH L1 IN mm \_\_\_\_\_

MSP	10	18.05.16	13428
NAME	ISS.	DATE	C/NOTE
APPROVED: M.PERREN			
CHECKED: M.PLESTED			
DRAWN: I. SANDY			
CUSTOMER REF.:			
ASSEMBLY DRG:			



## HARWIN

www.harwin.com  
technical@harwin.com

THIS DRAWING AND ANY INFORMATION OR DESCRIPTIVE MATTER SET OUT HEREON ARE CONFIDENTIAL AND COPYRIGHT PROPERTY OF THE HARWIN GROUP AND MUST NOT BE DISCLOSED, LOANED, COPIED OR USED FOR MANUFACTURING, TENDERING OR FOR ANY OTHER PURPOSE WITHOUT THEIR WRITTEN PERMISSION.

TOLERANCES  
X. = ±1mm  
X.X = ±0.50mm  
X.XX = ±0.10mm  
X.XXX = ±0.01mm  
ANGLES = ±5°  
UNLESS STATED

MATERIAL:  
BRASS  
CW614N M TO BS EN 12164  
(CuZn39Pb3)

FINISH: NICKEL

S/AREA: mm<sup>2</sup>

TITLE:  
M2.5 HEXAGONAL  
MALE / FEMALE SPACER

DRAWING NUMBER:  
**R25-300XX02**

SHT  
2  
OF  
2