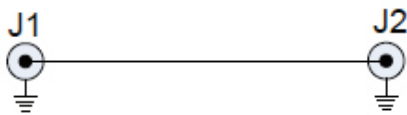


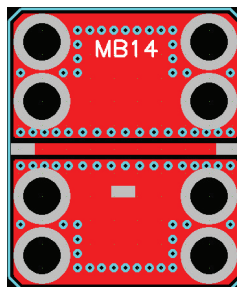
FEATURES

- Use for traight-through connections
- Can also be used for custom passive networks
- RO-4350 board material
- Fits MicroAmp MH-series housings

The MicroAmp MB-14 circuit board is used for a straight-through connection with the MicroAmp MH series of connectorized housings. It can be used as an extension when designing multiple board circuits with the MH-2 housing, thereby allowing a single board to be tested before adding a second one in cascade. The MB-14 can also be used to create custom passive networks by cutting the center trace and soldering components in series or shunt. Boards are fabricated from a high-performance 13 mil thick RO-4350 laminate with RoHS compatible ENIG plating (electroless nickel/immersion gold) on both the component side and the solid bottom ground plane. The board measures 0.490" x 0.590" and mounts into the housing with four or eight #1-72 screws for optimal high frequency grounding. Pads for the input/output RF connectors allow the SMA center pins to be easily soldered to the board after it is installed into the housing.



THROUGH-LINE SCHEMATIC



ASSEMBLY

REF	SIZE	FUNCTION
J1	N/A	RF port
J2	N/A	RF port