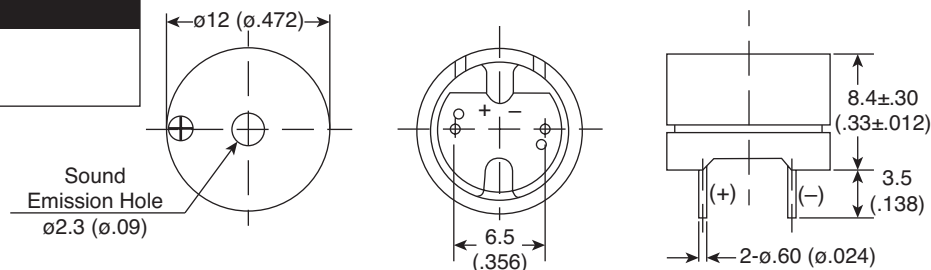


Part Number:

254-EMB140-RO



Frequency Response Curve

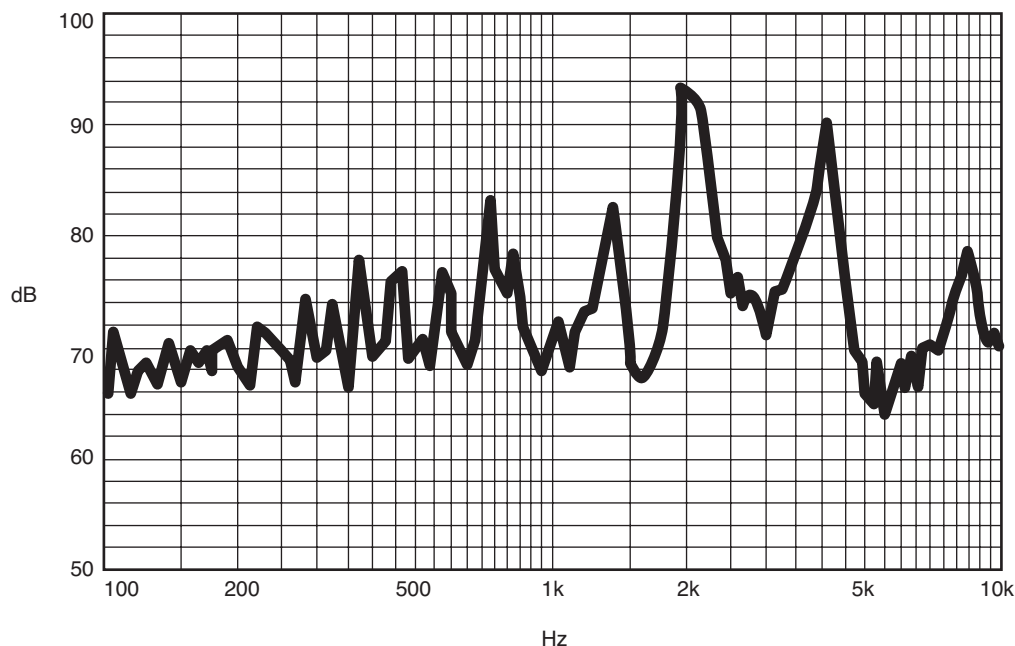
 A: Frequency Response, Magn dB re 20.00 μ PA

X: 2.0535 kHz

Y: 93.39dB

ZA: Live Curve

SSR T. RMS



KT-400549

Soldering Specifications:

- Hand Soldering: $360^{\circ} \pm 5^{\circ}\text{C} / 2 \text{ sec.}$
- Recommend using constant searing-iron
- Cautions: Wave soldering and wash not allowed

Electrical Specifications:

- Rated Voltage: 3.5Vo-p
- Operating Voltage: 2.5 ~ 6.0Vo-p
- Mean Current: 35mA (Max)
- Peak Current: 105mA (Max)
- Direct Current Resistance: $42 \pm 6.3\Omega$
- Sound Output: 85dBA (Min)
- Rated Frequency: 2048Hz

Mechanical Specifications:

- Operating Temperature: $-20^{\circ}\text{C} \sim +60^{\circ}\text{C}$
- Storage Temperature: $-40^{\circ}\text{C} \sim +80^{\circ}\text{C}$

Note: RoHS Compliant