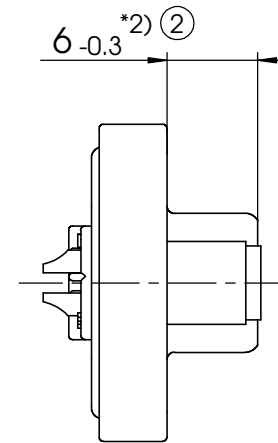
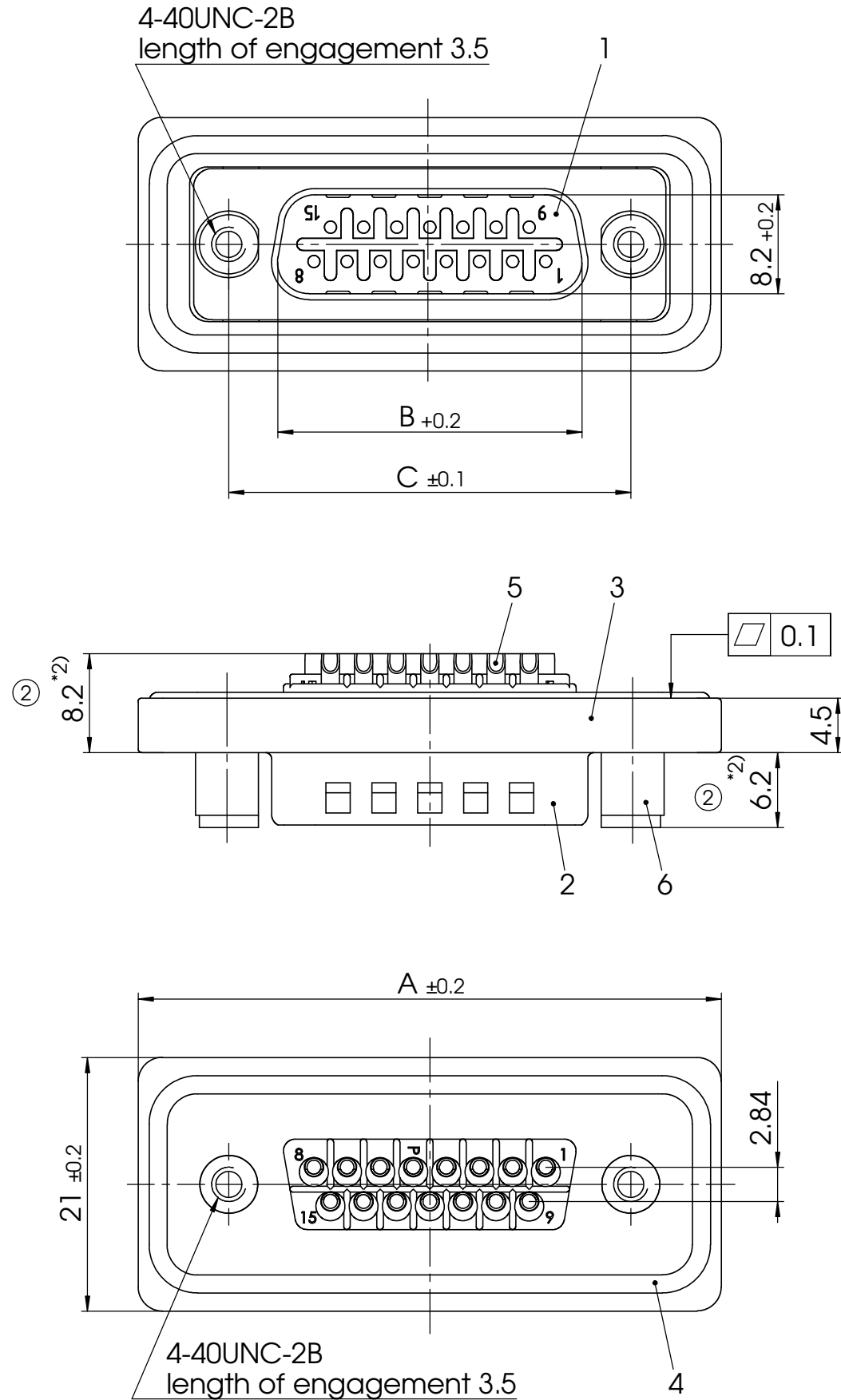


COMMENT:
ALL RIGHTS ARE RESERVED BY US FOR THIS DRAWING. WITHOUT OUR PRIOR CONSENT,
IT MAY NEITHER BE DUPLICATED NOR MADE AVAILABLE TO A THIRD PARTY.
AND IT ALSO MAY NOT BE IMPROPERLY USED BY THE RECEIVER, OR A THIRD PARTY.



FWDFxx ^{*1)} P

e.g. FWDF15P

*1) xx No. of contacts 09, 15 or 25

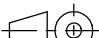

xx	A mm	B mm	C mm
09	40	16.9	25
15	48.3	25.2	33.3
25	62	38.9	47.04

② *2) Dimension starts from front surface of shell (Part-No. 2)

② max. torque are 40 Ncm
D-Sub connector with watertight frame,
Protection standard IP67, 100% checked

② according to DIN EN 60529 (compl. mounted)

6	2	Threaded spacer	4-40/4-40 / Brass	tin plated
5	xx	Signal contact	P0 / Brass	0.8µm Au / AWG 20
③ 4	1	O-ring seal	Silicone / UL94V-0	red
3	1	Watertight frame	PBT	black
2	1	Shell	Brass	tin plated
1	1	Insulator	PBT (-25°C - +70°C)	red
No.	St.	Part	Type Description/Material	Surface plating/Colour/Class

				Measurement without tolerance occ. to ISO 2768-m	SCALE 2:1	TITLE Waterproof Connector System		
				NAME / DATE				
				DRAWN sschref 15-03-2004				
				CHECKED cschoening 22-06-2010				
3	16-06-2010	22622				DWG.NO.	FWDFxxP	REV. 3
2	01-04-2008	22222						
1								
REV.	DATE	CH.-NO.	ORIGINAL: DIN A3-DRAWING AS A FILE			REPLACEMENT FOR:	FWDFxxPa_ACAD	PAGES 1