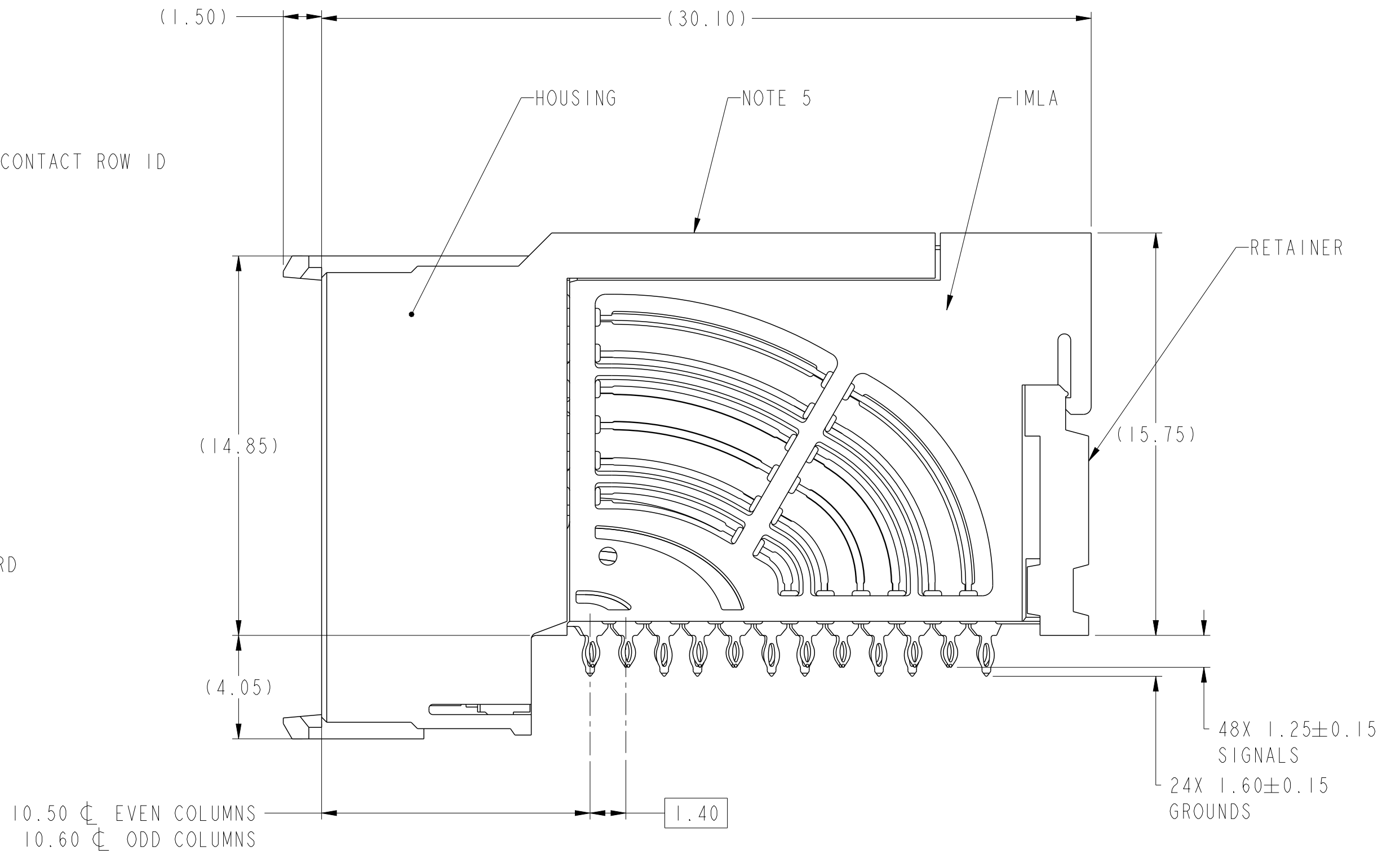
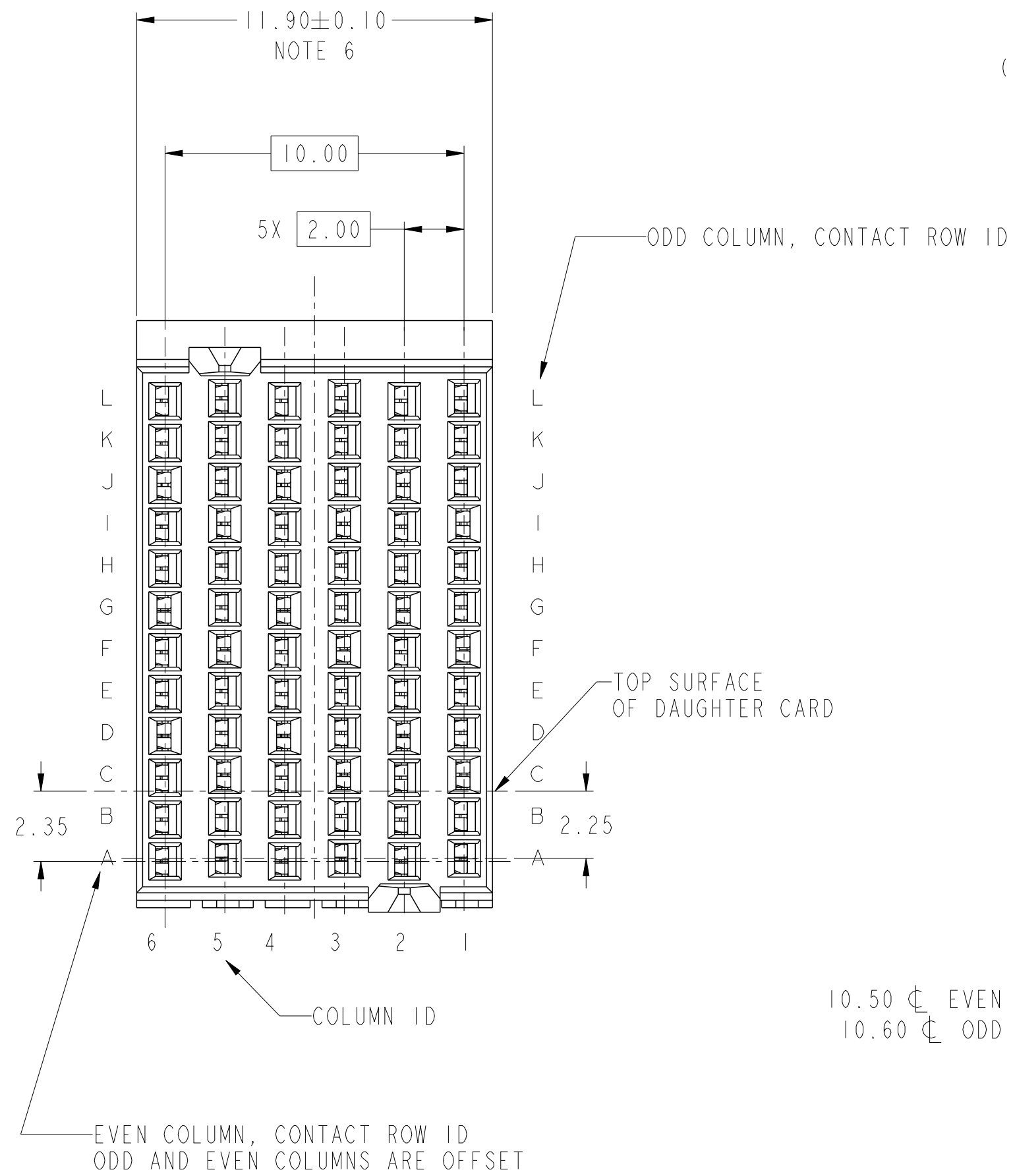
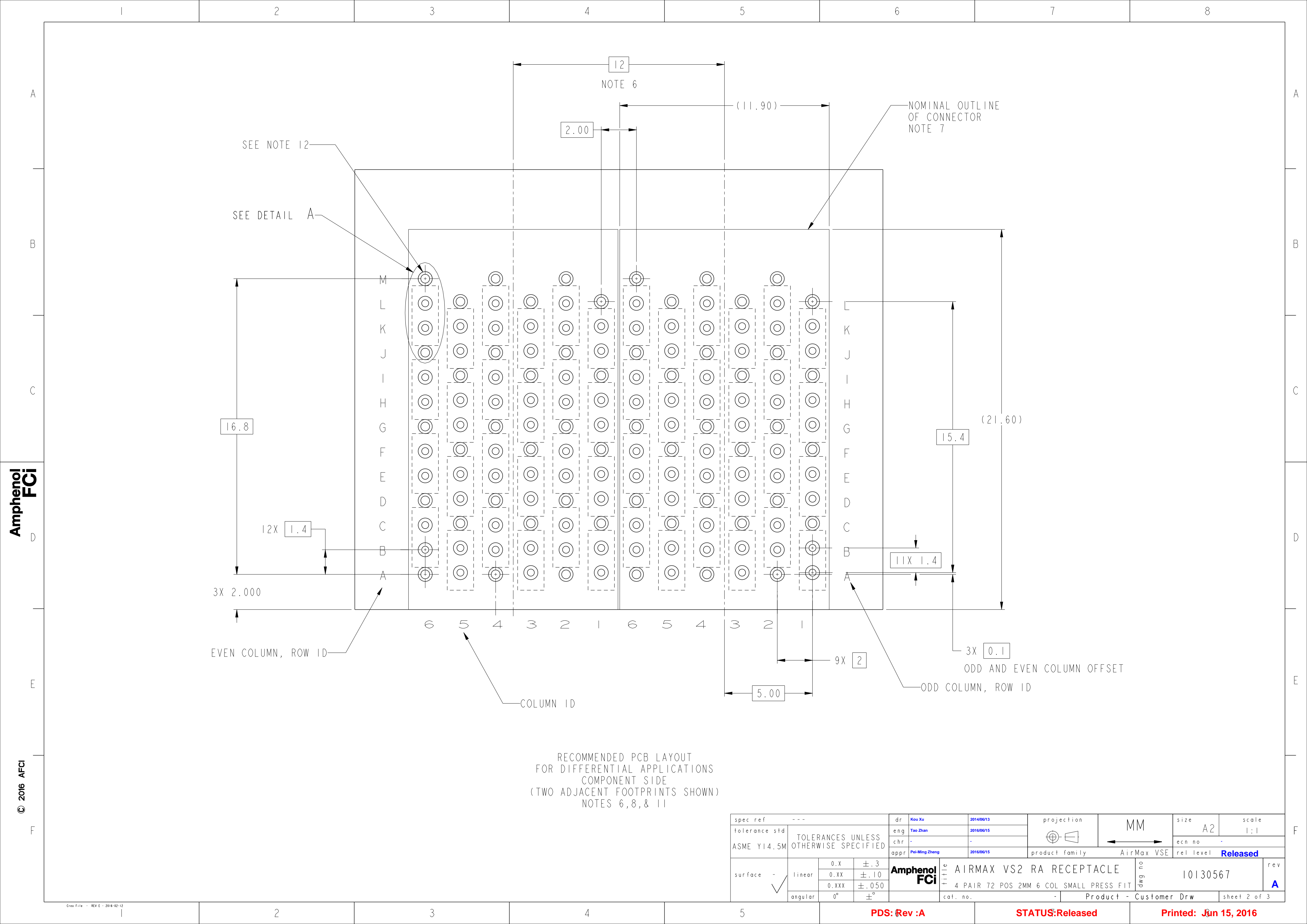


PRODUCT NUMBER
SEE SHEET 3



spec ref	---	dr	Kou Xu	2014/06/13	projection	MM	size	A2	scale	1:1
tolerance std	ASME Y14.5M	eng	Tao Zhan	2016/06/15	chr	-	ecn no	-		
		appr	Pei-Ming Zheng	2016/06/15	product family	AirMax VSE	rel level	Released		
surface	-	linear	0.X	$\pm .3$	Amphenol FCi	title	AIRMAX VS2 RA RECEPTACLE	dwg no	10130567	rev
			0.XX	$\pm .10$			4 PAIR 72 POS 2MM 6 COL SMALL PRESS FIT			A
			0.XXX	$\pm .050$						
		angular	0°	$\pm ^\circ$						
					cat. no.	-	Product - Customer Drw	sheet 1 of 3		



Amphenol
FCi

© 2016 APCI

RECOMMENDED PCB LAYOUT
FOR DIFFERENTIAL APPLICATIONS
COMPONENT SIDE
(TWO ADJACENT FOOTPRINTS SHOWN)
NOTES 6, 8, & 11

spec ref		---		dr		Kou Xu	2014/06/13	projection		MM		size		A2	scale		1:1								
tolerance std		TOLERANCES UNLESS OTHERWISE SPECIFIED		eng		Tao Zhan	2016/06/15					ecn no		-											
chr				-		-																			
ASME Y14.5M				appr		Pei-Ming Zheng		2016/06/15	product family		AirMax VSE		rel level		Released										
surface		linear		0.X		±.3		Amphenol FCI		title		AIRMAX VS2 RA RECEPTACLE		dwg no		10130567		rev		A					
																						0.XX		±.10	
																						0.XXX		±.050	
		angular		0°		±°		cat. no.		-		Product - Customer Drw		sheet 2 of 3											

