

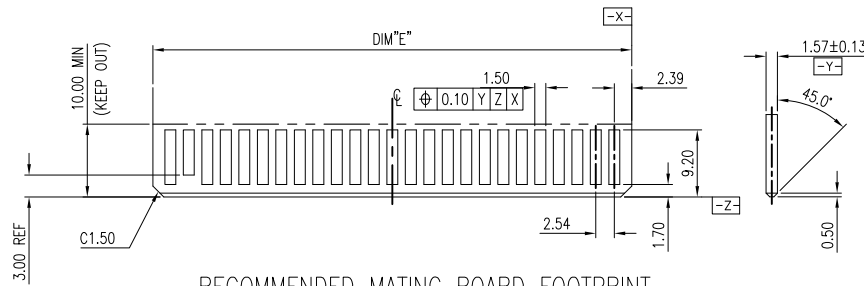
This document is the property of Amphenol Corporation and is delivered on the express condition that it is not to be disclosed, reproduced or used, in whole or in part, for manufacture or sale by anyone other than Amphenol Corporation without its prior consent, and that no right is granted to disclose or to use any information in this document.

The marking on this product doesn't contain environmental hazardous material and must follow one or more specifications per Material Specification SS-00259 for Sony GP compliant or per directive 2011/65/EU for RoHS compliant or per IEC 61249-2-21 for Halogen Free compliant.

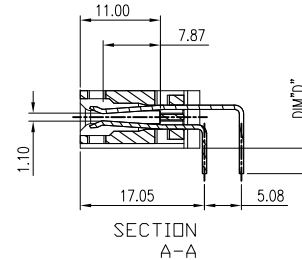
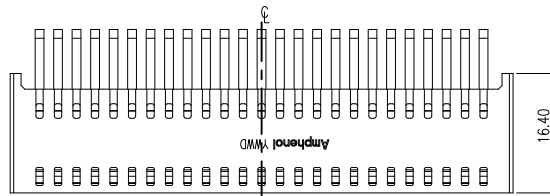


ORIGINAL

REVISIONS				
SYM	ECN No.	DESCRIPTION	DATE	BY
A	NE-17083	RELEASE TO PRODUCTION	04/24/2017	Chenny Yeh
B	NE-17144	ADD TERMINAL WIDTH FOR CUSTOMER REQUEST	06/16/2017	Chenny Yeh



RECOMMENDED MATING BOARD FOOTPRINT TOLERANCES, ±0.05

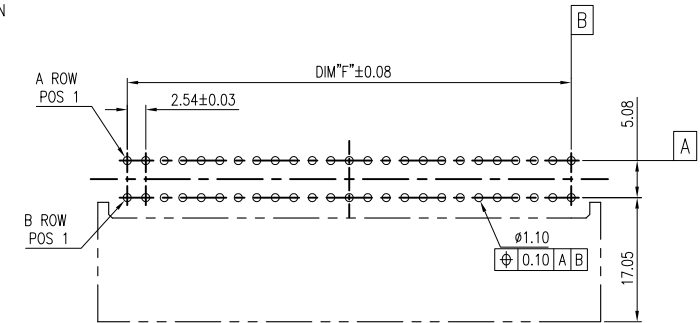


GPCP 1 X X X 0 0 1 1 X HR

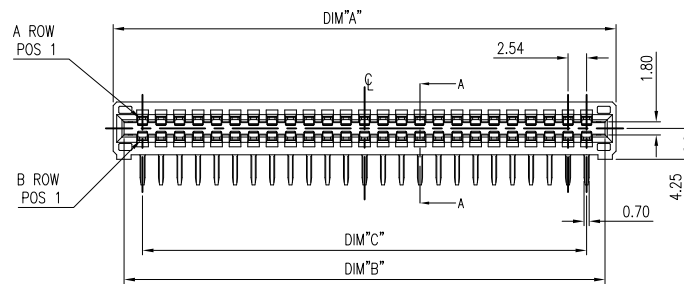
CONTACT FINISH:
3: 15u" GOLD
4: 30u" GOLD

TAIL LENGTH:
1: TAIL LENGTH 3.50
2: TAIL LENGTH 5.00

POWER PIN Q'TY:
26: 26 PIN
50: 50 PIN
54: 54 PIN
64: 64 PIN



RECOMMENDED PCB LAYOUT TOLERANCE, ±0.05



GPCP1X6400112HR	86.82	83.82	78.74	5.00	83.52	78.74
GPCP1X6400111HR	86.82	83.82	78.74	3.50	83.52	78.74
GPCP1X5400112HR	74.12	71.12	66.04	5.00	70.82	66.04
GPCP1X5400111HR	74.12	71.12	66.04	3.50	70.82	66.04
GPCP1X5000112HR	69.04	66.04	60.96	5.00	65.74	60.96
GPCP1X5000111HR	69.04	66.04	60.96	3.50	65.74	60.96
GPCP1X4600112HR	63.96	60.96	55.88	5.00	60.66	55.88
GPCP1X4600111HR	63.96	60.96	55.88	3.50	60.66	55.88
GPCP1X2600112HR	38.56	35.56	30.48	5.00	35.26	30.48
GPCP1X2600111HR	38.56	35.56	30.48	3.50	35.26	30.48
PART NUMBER	DIM "A"	DIM "B"	DIM "C"	DIM "D"	DIM "E"	DIM "F"

NOTES:

1. MATERIAL:

HOUSING: HIGH TEMPERATURE THERMO PLASTIC UL94V-0 COLOR BLACK
TERMINAL: HIGH PERFORMANCE COPPER ALLOY

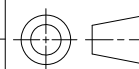
2. FINISH:

TERMINAL:
CONTACT AREA: SELECTIVE GOLD PLATION.
SOLDERING AREA: MATT TIN PLATION. 100 μ" THK MIN.
UNDER PLATION: NICKEL PLATION. 50 μ" THK MIN.

3. THIS PRODUCT DOESN'T CONTAIN ENVIRONMENTAL HAZARDOUS MATERIALS PER DIRECTIVE 2011/65/EU FOR RoHS AND PER IEC 61249-2-21 FOR HALOGEN FREE COMPLIANT.

TOLERANCE	DRAWN	APPROVALS	DATE	TITLE	UNIT	SIZE	PART No.
X.	DESIGNED	Chenny Yeh	06/16/2017	PCI/E POWER CONNECTOR RECEPTACLE, R/A DIP TYPE	mm	A3	GPCP1XXX0011XHR
X.X ±0.30	CHECKED	Sondra Sang	06/16/2017				
X.XX ±0.20	APPROVED	Hank Hsu	06/16/2017	PROJECT CODE T582	SCALE	SHEET	DWG No.
X.XXX ±0.10	DWG TYPE	CUST DWG			NA	1 OF 1	GPCP1XXX0011XHR
ANGULAR ±2°							REV. B
UNLESS OTHERWISE SPECIFIED							

Amphenol[®]
Amphenol Corporation
Amphenol Taiwan Corporation



UNIT mm
SCALE NA

SIZE A3
SHEET 1 OF 1

PART No. GPCP1XXX0011XHR
DWG No. GPCP1XXX0011XHR
REV. B