

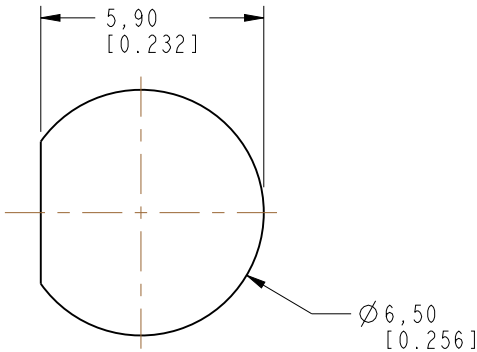
NOTES:

1. MATERIALS AND FINISHES:
BODY - BRASS, GOLD PLATING.
CONTACT - BeCu, GOLD PLATING.
INSULATOR - PTFE, NATURAL
NUT - BRASS, NICKEL PLATING
2. ELECTRICAL:
A. IMPEDANCE: 75 OHM
B. FREQUENCY RANGE: DC-18 GHz
C. RETURN LOSS (VSWR): -25dB (1.12) MAX DC-6 GHz
-20dB (1.22) MAX 6-12 GHz
D. DIELECTRIC WITHSTANDING VOLTAGE: 1000 VRMS, MIN.
3. MECHANICAL:
A. DURABILITY: 500 CYCLES MIN.
B. TEMPERATURE RANGE: -65° C TO +165° C
4. PACKAGING:
A. QUANTITY: SINGLE PACK
B. MARKING: BAG TO BE MARKED:
"AMPHENOL RF, 34-1028H-12G DATE CODE"

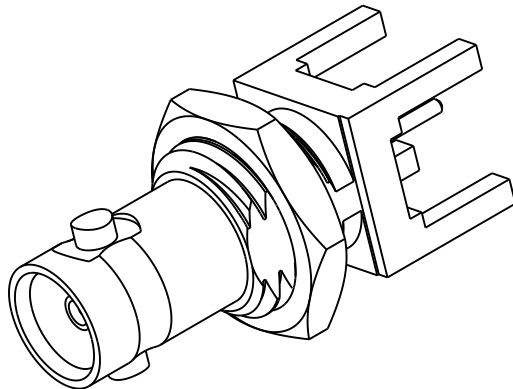
THIRD ANGLE PROJ.

REVISIONS

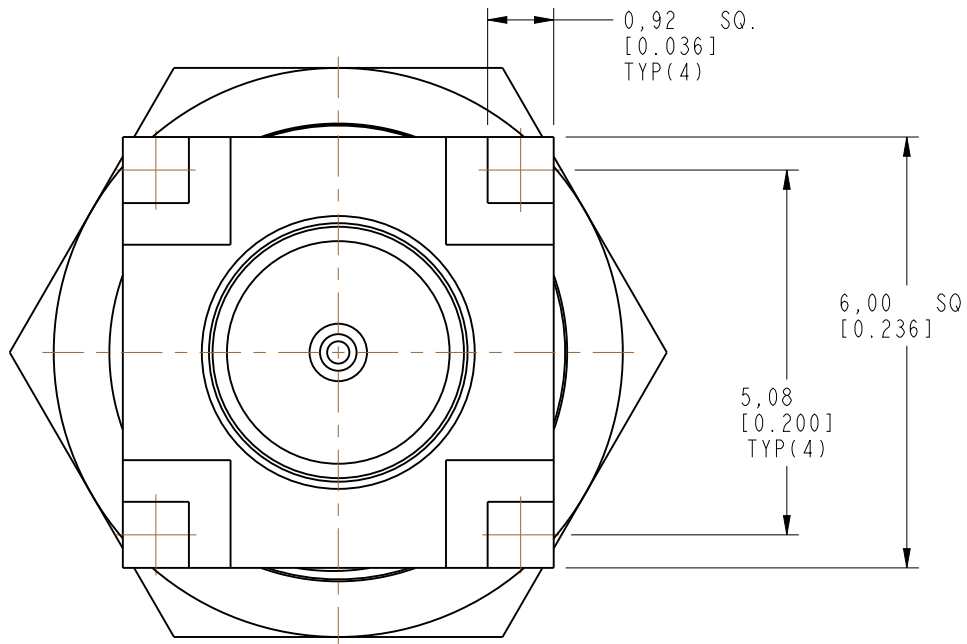
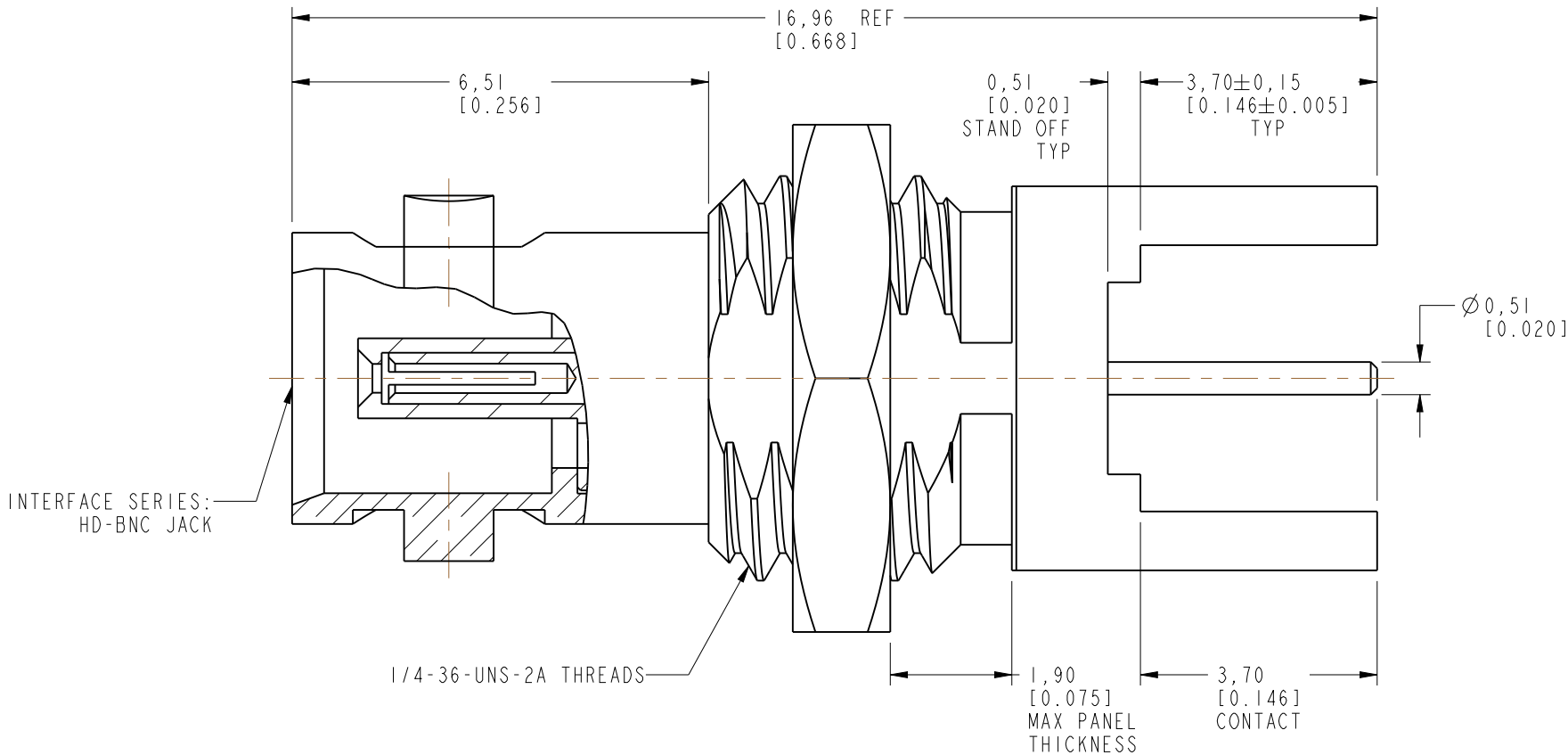
REV	DESCRIPTION	DATE	ECN	APPR
A	RELEASE TO MFG.	13-Mar-18	7181	BMG



SCALE 5.000
RECOMMENDED PANEL CUTOUT
DIMENSIONS



SCALE 4.000



CUSTOMER OUTLINE DRAWING
ALL OTHER SHEETS ARE FOR INTERNAL USE ONLY

UNLESS OTHERWISE SPECIFIED, DIMENSIONS ARE IN METRIC AND TOLERANCES ARE:
<0.5mm 0.5 - 6mm 6 - 30mm 30 - 120mm ANGLES
± 0.05mm ±0.1mm ±0.2mm ± 0.3mm ±1°

NOTICE - These drawings, specifications, or other data (1) are, and remain the property of Amphenol corp. (2) must be returned upon request; and (3) are confidential and not to be disclosed to any person other than those to whom they are given by Amphenol Corp. the furnishing of these drawings, specifications, or other data by Amphenol Corp., or to any other person to anyone for any purpose is not to be regarded by implication or otherwise in any manner licensing, granting rights to permitting such holder or any other person to manufacture, use or sell any product, process or design, patented or otherwise, that may in any way be related to or disclosed by said drawings, specifications, or other data.

MATERIAL

SEE NOTES

REFERENCE

EAR# 8093

REF: 34-1018-12G

CONFIGURATION LEVEL: In Work

FINISH

DRAWN

B. GREENBAUM

ENGINEER

B. GREENBAUM

APPROVED

K. CAPOZZI

CAD FILE

DATE

27-Nov-17

DATE

27-Nov-17

DATE

13-Mar-18

TITLE

HB-BNC STR BHD JACK
RECEPTACLE
THRU HOLE PCB

SCALE: 9.5:1.0 SHEET 2 OF 3

DWG SIZE

B

REV

A

Amphenol RF

www.amphenolrf.com

DRAWING NO. 34-1028H-12G

ITEM NO. 34-1028H-12G

PART NO. 34-1028H-12G

