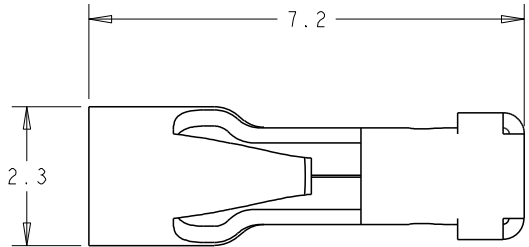
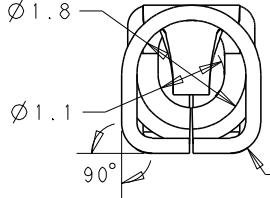
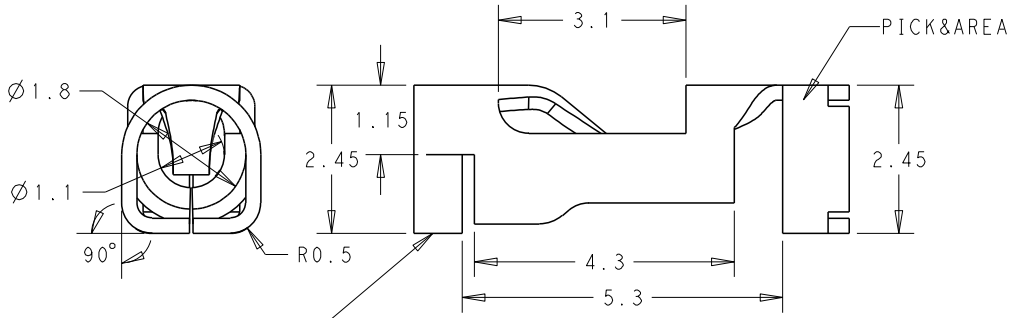


REVISIONS					
P	LTR	DESCRIPTION	DATE	DWN	APVD
A		ECR-15-012172, RELEASE PRODUCTION VERSION	17AUG2015	GF	SM
A1		ECR-15-012489, UPDATE NOTE DESCRIPTION	24AUG2015	GF	SM

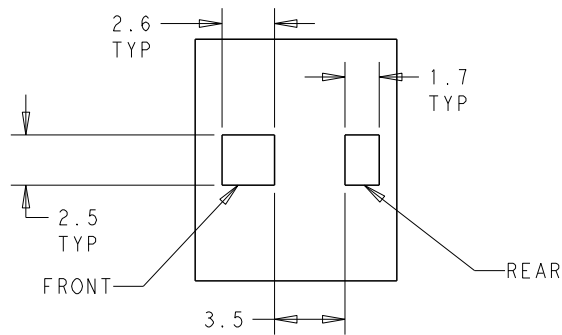


NOTES :

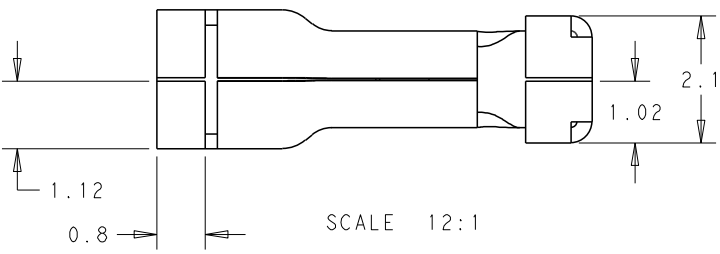
- MATERIALS AND FINISH:
 - CONTACTS: COPPER ALLOY, FINISH: TIN OVER NICKEL UNDERPLATE
- MUST COMPLY WITH DIRECTIVE 2002/95/EC (ROHS)
- WIRE TYPES AND SIZES ACCEPTED
 WIRE SIZE: 20AWG SOLID & STRANDED(CONDUCTOR NO:7)
 22AWG SOLID & STRANDED(CONDUCTOR NO:7)
 24AWG SOLID
 TIN-DIPPED FOR ALL STRANDED WIRE
 MAX INSULATION OD: 1.75mm MAX.
 STRIP LENGTH: 5.5+/-0.3mm
- PACKAGED IN TAPE AND REEL



FRONT



RECOMMENDED PCB LAYOUT



SCALE 12:1

P/N:2834010-3

THIS DRAWING IS A CONTROLLED DOCUMENT.		DWN	24AUG2015		 TE Connectivity
		CHK	24AUG2015		
		APVD	24AUG2015		
		NAME	XU XIANG		
DIMENSIONS: mm		TOLERANCES UNLESS OTHERWISE SPECIFIED:		PRODUCT SPEC	
		0 PLC ±-		108-137049	
		1 PLC ±0.20		APPLICATION SPEC	
		2 PLC ±0.13		114-137049	
		3 PLC ±		WEIGHT	
		4 PLC ±		-	
MATERIAL		FINISH		SIZE	
				A3	
				CAGE CODE	
				-	
				DRAWING NO	
				C=2834010	
				RESTRICTED TO	
				-	
				SCALE	
				12:1	
				SHEET	
				1 OF 1	
				REV	
				A1	