

4

3

2

1

THIS DRAWING IS UNPUBLISHED.

RELEASED FOR PUBLICATION

© COPYRIGHT

ALL RIGHTS RESERVED.

LOC

DIST


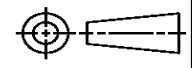
REVISIONS


P	LTR	DESCRIPTION	DATE	DWN	APVD
	C1	ECR-14-002926	28FEB2014	GK	HMR

REPLACED BY OCEAN STYLE APPLICATOR PART  
NUMBER 2151123-1

FOR REPLACEMENT PARTS FOR APPLICATOR 1426187  
REFER TO ADDITIONAL PAGE(S). SPARE PARTS KIT (IF LISTED)  
WILL REMAIN AVAILABLE.


THE REPLACEMENT OCEAN STYLE APPLICATOR HAS THE  
SAME TERMINATOR/PRESS INTERFACE AS APPLICATOR  
1426187

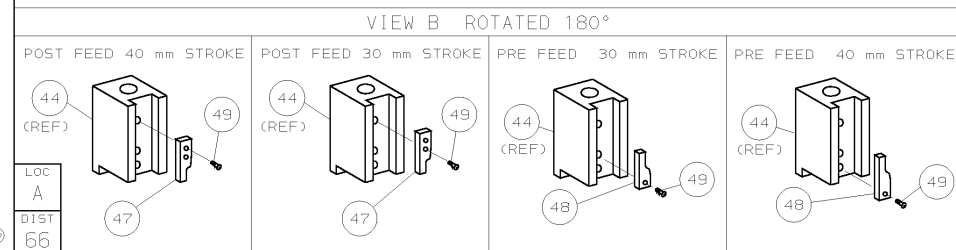
THIS DRAWING IS A CONTROLLED DOCUMENT.		DWN GOPALAKRISHNA HV		 TE Connectivity			
DIMENSIONS:		CHK RAGHAVENDRA					
		APVD RAGHAVENDRA		NAME SIDE FEED HD-I APPLICATOR			
		PRODUCT SPEC					
		APPLICATION SPEC					
MATERIAL		WEIGHT		SIZE A3	CAGE CODE	DRAWING NO C- 1426187	RESTRICTED TO
FINISH		CUSTOMER DRAWING		SCALE		SHEET 1 OF 2	REV C1


 1. RECOMMENDED SPARE PARTS.

2. GREASE RAM, CAM, CAM FOLLOWER AND FEED ROD LIGHTLY.

3. LUBRICATE DAILY PER THE APPLICATOR INSTRUCTION SHEET SUPPLIED WITH THE APPLICATOR.

 4. IT MAY BE NECESSARY TO GUIDE OFF THE INSULATION BARREL.



QTY REQD PER ASSY				PARTS LIST			
DIMENSIONS: mm (INCHES) DO NOT SCALE PRINT.				MATL		HT TR	
TOLERANCES UNLESS OTHERWISE SPECIFIED:				05APRO1		FIN	
1 PLC DEC $\pm 0.5$ (.02 IN)				DR L1 LOFHOUSE		05APRO1 F. BACKHURST	
2 PLC DEC $\pm$				CHK		REL 22JUNICOR	
3 PLC DEC $\pm$				NAME		 AMP Incorporated Harrisburg, PA 17105-3608	
ANGLES $\pm$				SIDE FEED HD-I APPLICATOR		MACHINE REF	
SURF TEXTURE: $\checkmark$				SCALE		HD-I APPL	
REMOVE BURRS, BREAK				D		DWG NO	
SHARP EDGES .0035 MAX				1426187		SHEET	
APP DATE				1		REV	
CAGE CODE				CUSTOMER AND ASSEMBLY DRAWING		RESTRICTED TO	
00779						-	