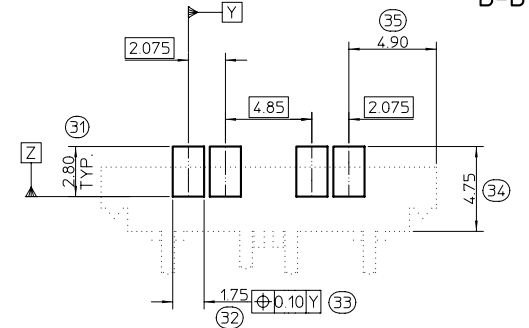
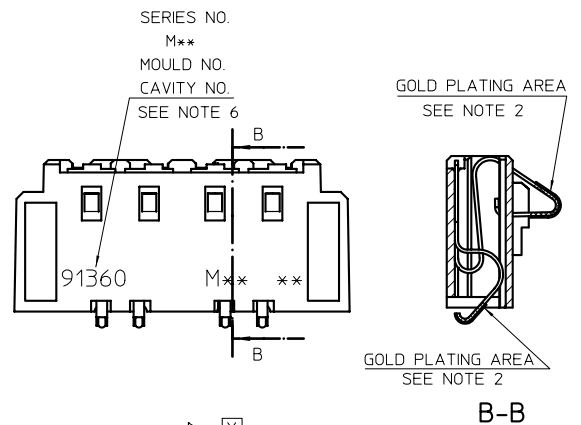
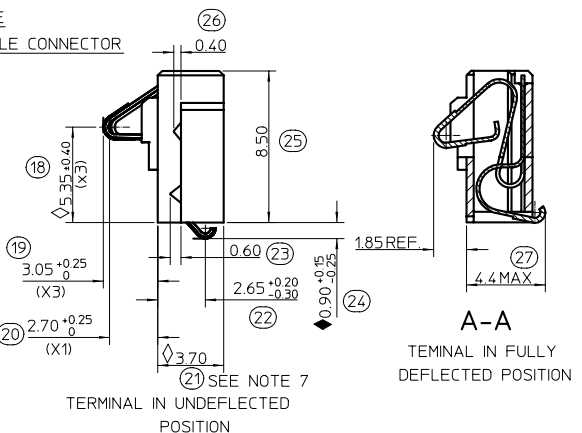


TERMINALS OMITTED FOR CLARITY TO SHOW PLASTIC DIMENSIONS



RECOMMENDED PCB LAYOUT

NOTES:

- MATERIALS:  
HOUSING: POLYESTER (PBT), 30% GLASS FILL, UL94 V-0, COLOUR BLACK  
CONTACT: PHOSPHOR BRONZE CuSn8 0.15 REF. THICK
- PLATING:  
25um NICKEL UNDERCOAT ALLOVER. 0.76um HARD GOLD AT CROWN POINT. GOLD FLASH PRESENT OVER BEADED AREA.
- PACKAGING: TAPE AND REEL
- PART WEIGHT IS 0.66g
- DATECODE CONSISTING OF YEAR, WEEK, DAY, M/C NO., VERSION No., APPROVAL CODING  
APPROVAL CODING: 'V' INDICATES PART FROM PRE-APPROVED LINE. 'A' INDICATES PART FROM APPROVED LINE.  
TO BE HOT STAMPED WITH 1.6mm HIGH TEXT.
- TEXT TO BE 1.0mm HIGH & RECESSED 0.1mm - M\*\* DENOTES MOLEX ENTITY WHERE PART WAS MOULDED: MXI=SHANNON, MSH=SHANGHAI, MX=US
- DIMENSIONS 21 AND 30 TO BE USED FOR MOULD Cpk STUDIES.  
LAST INSPECTION NUMBER USED: (35)

VERSION No.	DESCRIPTION
3	MATERIAL CHANGED FROM GREY TO BLACK

VARIOUS MODS:  
E2001-0530  
EKELLY 00/11/08

◇ = 3  
◆ = 1

5:1 X

CTOBIN

MWILHITE

91360-0003