

# AMPHENOL PART NUMBER CONFIGURATION

U90 - H 1 X 1 - 1 X X X

## HEAT SINK OPTION

- S = PIN STYLE HEAT SINK (NICKEL PLATED) AND CLIP (H=6.5mm: SAN HEIGHT)
- 6 = PIN STYLE HEAT SINK (NICKEL PLATED) AND CLIP (H=4.2mm: PCI HEIGHT)
- 7 = PIN STYLE HEAT SINK (NICKEL PLATED) AND CLIP (H=13.5mm: TALL)
- D = PIN-FIN HEAT SINK (ANODIZED, BLACK) AND CLIP (H=6.5mm: SAN HEIGHT)
- F = PIN-FIN HEAT SINK (ANODIZED, BLACK) AND CLIP (H=4.2mm: PCI HEIGHT)
- F = PIN-FIN HEAT SINK (ANODIZED, BLACK) AND CLIP (H=13.5mm: TALL)
- N = PIN-FIN HEAT SINK (NICKEL PLATED) AND CLIP (H=6.5mm: SAN HEIGHT)
- P = PIN-FIN HEAT SINK (NICKEL PLATED) AND CLIP (H=4.2mm: PCI HEIGHT)
- R = PIN-FIN HEAT SINK (NICKEL PLATED) AND CLIP (H=13.5mm: TALL)

NOTE: FOR DIMENSION "H" SEE SHEET 2

## PACKAGING

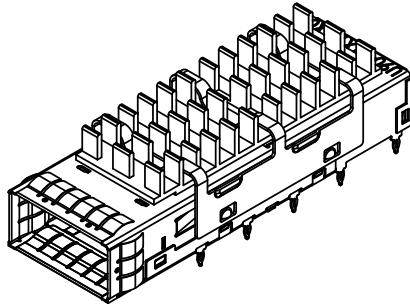
- 1 = TRAY PACKAGING W/ HEAT SINK IN SEPARATE TRAY
- A = TRAY PACKAGING W/ HEAT SINK ASSEMBLED
- T = TAPE AND REEL PACKAGING W/ HEAT SINK IN SEPARATE TRAY

## LIGHT PIPE OPTION

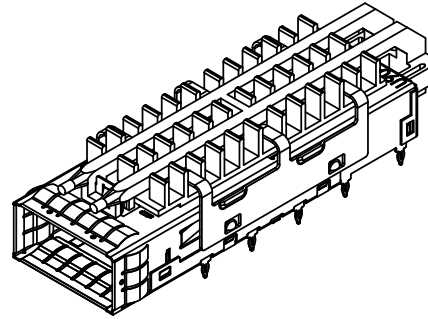
- 0 = WITHOUT LIGHT PIPE
- 1 = WITH DUAL ROUND LIGHT PIPE INSTALLED
- 3 = WITH SQUARE LIGHT PIPE INSTALLED (SEE SHEET 3 & 7 FOR DETAILS)
- 7 = WITH SINGLE ROUND LIGHT PIPE INSTALLED

## OPTIONAL DUST COVER

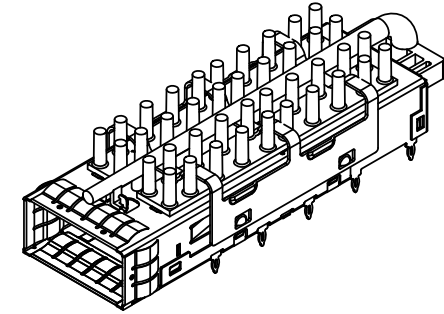
- 0 = WITHOUT DUST COVER
- D = WITH DUST COVER SHIPPED AS LOOSE PIECE)



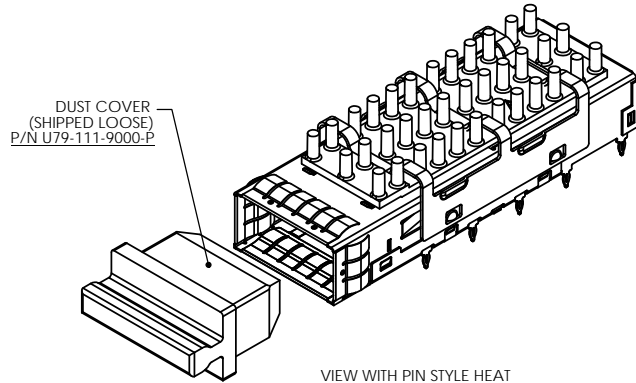
VIEW WITH PIN-FIN STYLE HEAT SINK AND CLIP ASSEMBLED  
(P/N U90-H1D1-100A)



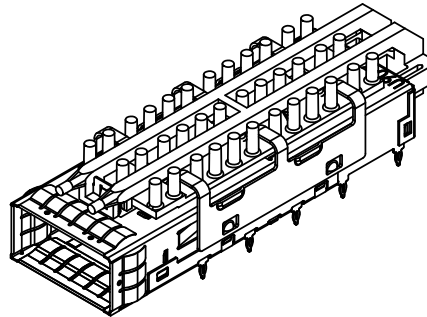
VIEW WITH PIN-FIN STYLE HEAT SINK, CLIP AND LIGHT PIPE ASSEMBLED  
(P/N U90-H1D1-101A)



VIEW WITH PIN STYLE HEAT SINK, CLIP AND LIGHT PIPE ASSEMBLED  
(P/N U90-H1S1-107A)



VIEW WITH PIN STYLE HEAT SINK AND CLIP ASSEMBLED AND DUST COVER (SHIPPED LOOSE)  
(P/N U90-H1S1-1D0A)



VIEW WITH PIN STYLE HEAT SINK, CLIP AND LIGHT PIPE ASSEMBLED  
(P/N U90-H1S1-101A)



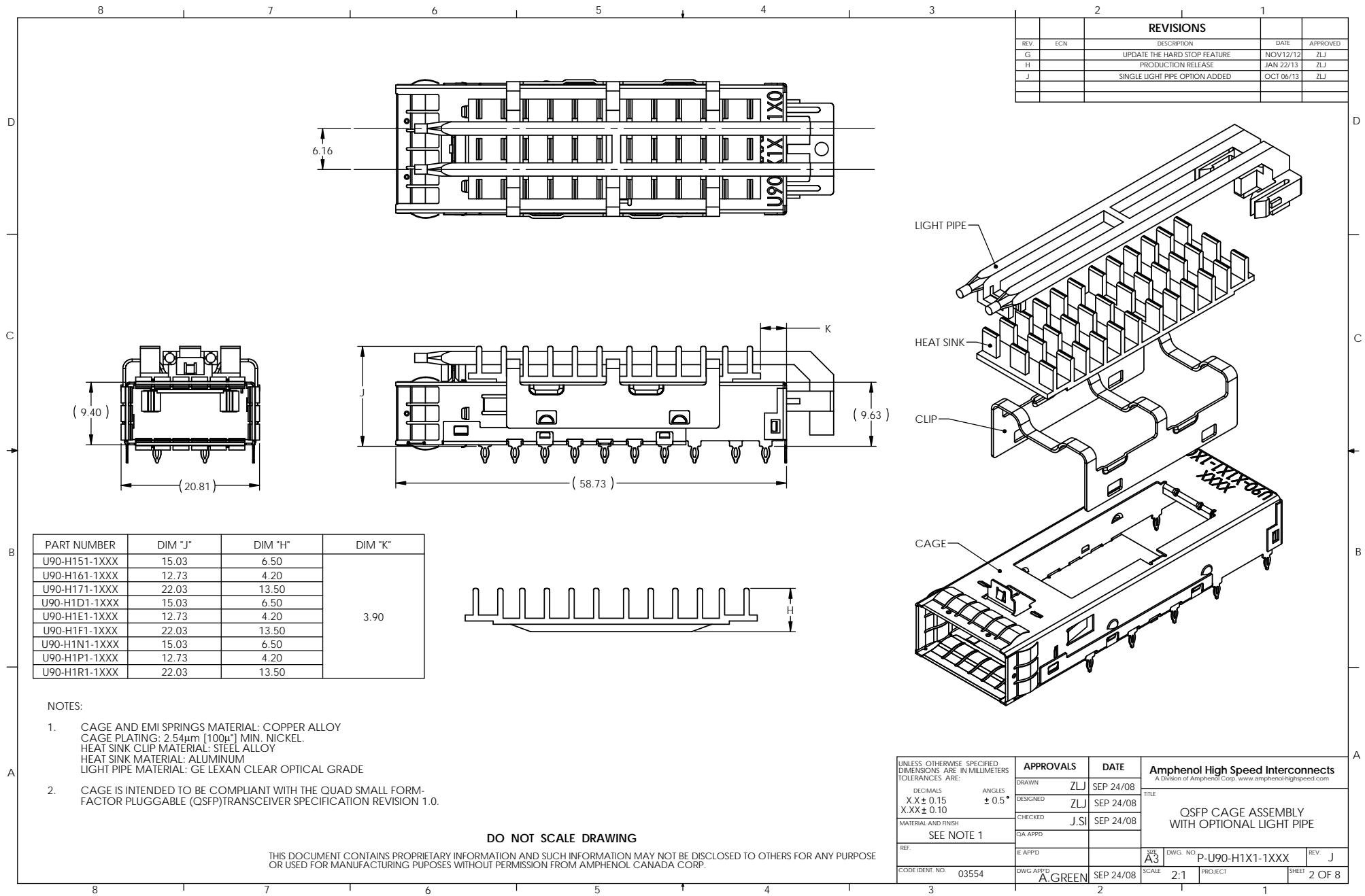
DO NOT SCALE DRAWING

THIS DOCUMENT CONTAINS PROPRIETARY INFORMATION AND SUCH INFORMATION MAY NOT BE DISCLOSED TO OTHERS FOR ANY PURPOSE OR USED FOR MANUFACTURING PURPOSES WITHOUT PERMISSION FROM AMPHENOL CANADA CORP.

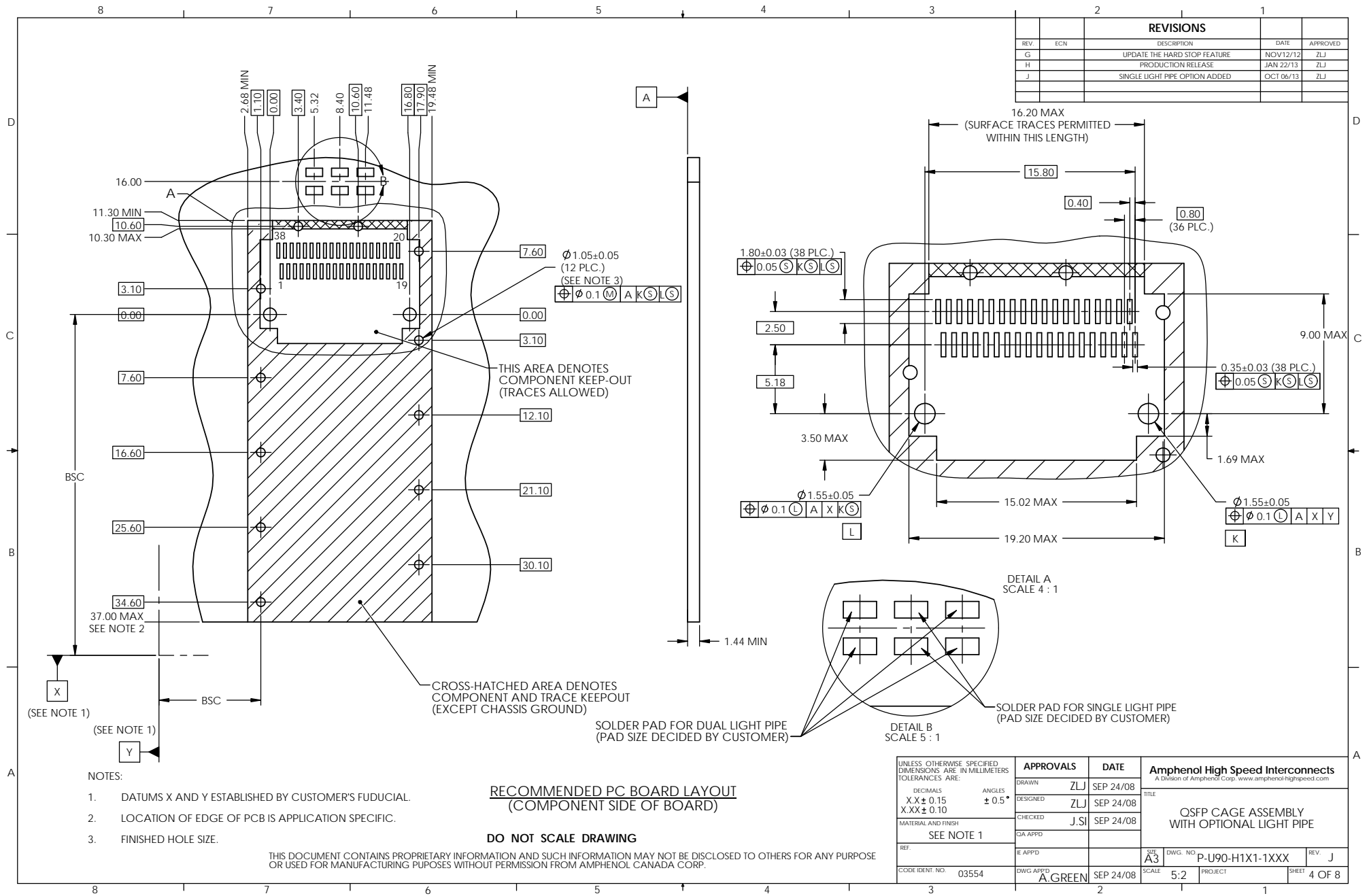
## REVISIONS

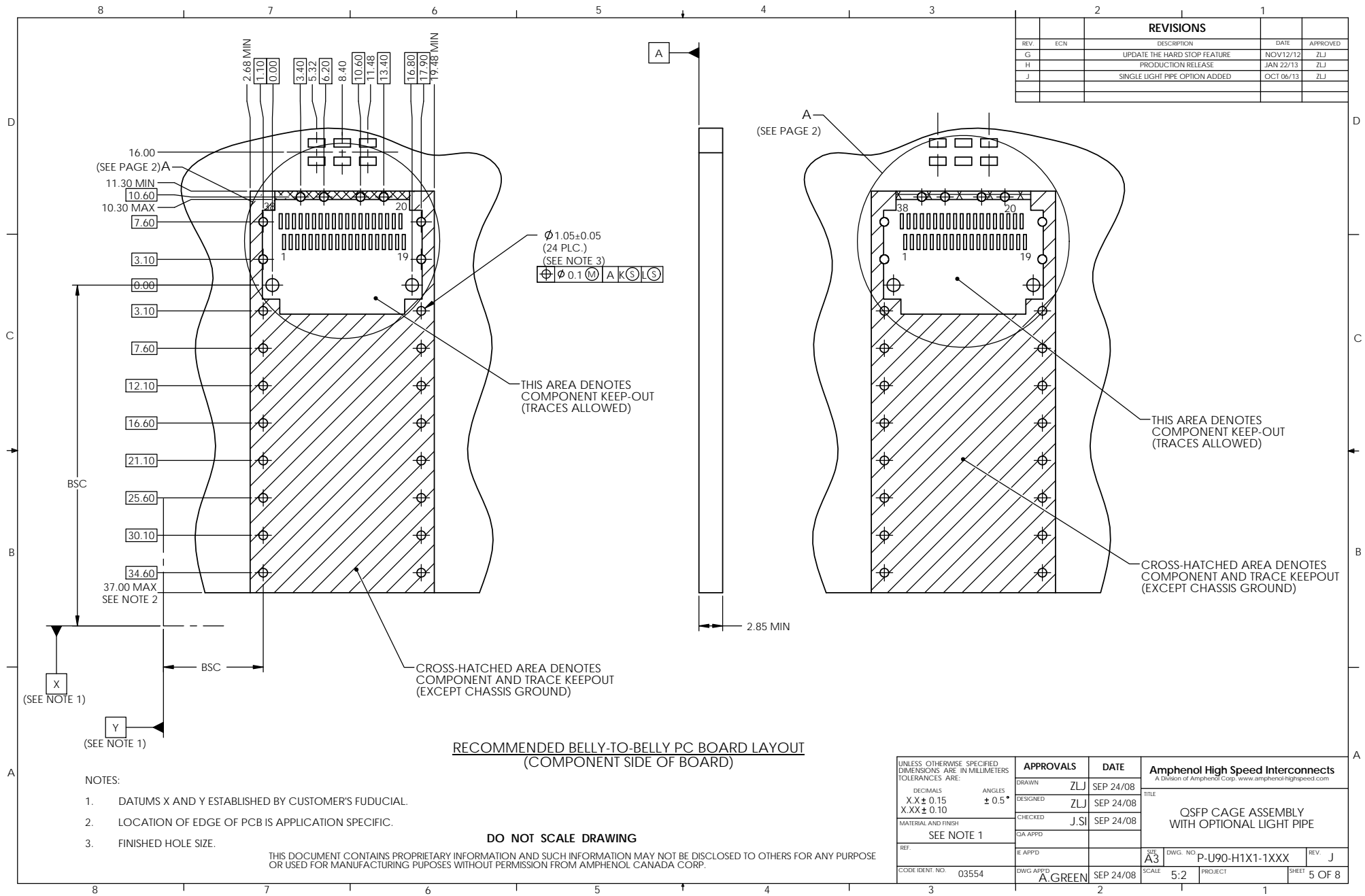
REV	ECN	DESCRIPTION	DATE	APPROVED
G		UPDATE THE HARD STOP FEATURE	NOV12/12	ZLJ
H		PRODUCTION RELEASE	JAN 22/13	ZLJ
J		SINGLE LIGHT PIPE OPTION ADDED	OCT 06/13	ZLJ

UNLESS OTHERWISE SPECIFIED DIMENSIONS ARE IN MILLIMETERS TOLERANCES ARE:		APPROVALS		DATE		Amphenol High Speed Interconnects <small>A Division of Amphenol Corp. www.amphenolhighspeed.com</small>					
DECIMALS X.X ± 0.15 X.XX ± 0.10		ANGLES ± 0.5°		DRAWN ZLJ SEP 24/08		TITLE  QSFP CAGE ASSEMBLY WITH OPTIONAL LIGHT PIPE					
MATERIAL AND FINISH  SEE NOTE 1		DESIGNED ZLJ SEP 24/08									
REF.		CHECKED J.SI SEP 24/08									
		C/A APPD									
		E APPD				SIZE A3		DWG. NO. P-U90-H1X1-1XXX		REV. J	
CODE IDENT. NO. 03554		DWG APPD A.GREEN		SEP 24/08		SCALE 2:1		PROJECT		SHEET 1 OF 8	









REVISIONS				
REV	ECN	DESCRIPTION	DATE	APPROVED
G		UPDATE THE HARD STOP FEATURE	NOV12/12	ZLJ
H		PRODUCTION RELEASE	JAN 22/13	ZLJ
J		SINGLE LIGHT PIPE OPTION ADDED	OCT 06/13	ZLJ

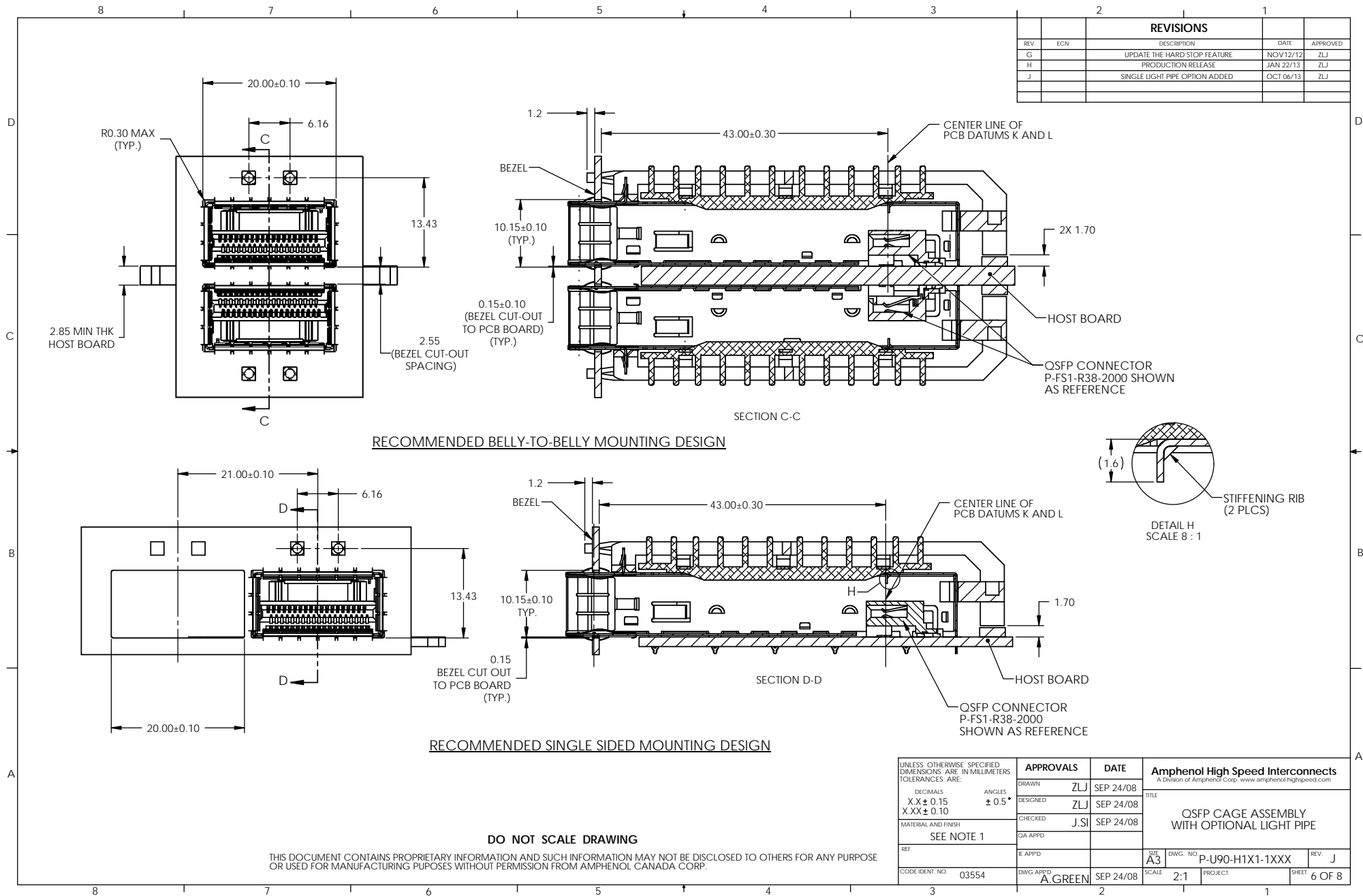
- NOTES:
- DATUMS X AND Y ESTABLISHED BY CUSTOMER'S FUDICIAL.
  - LOCATION OF EDGE OF PCB IS APPLICATION SPECIFIC.
  - FINISHED HOLE SIZE.

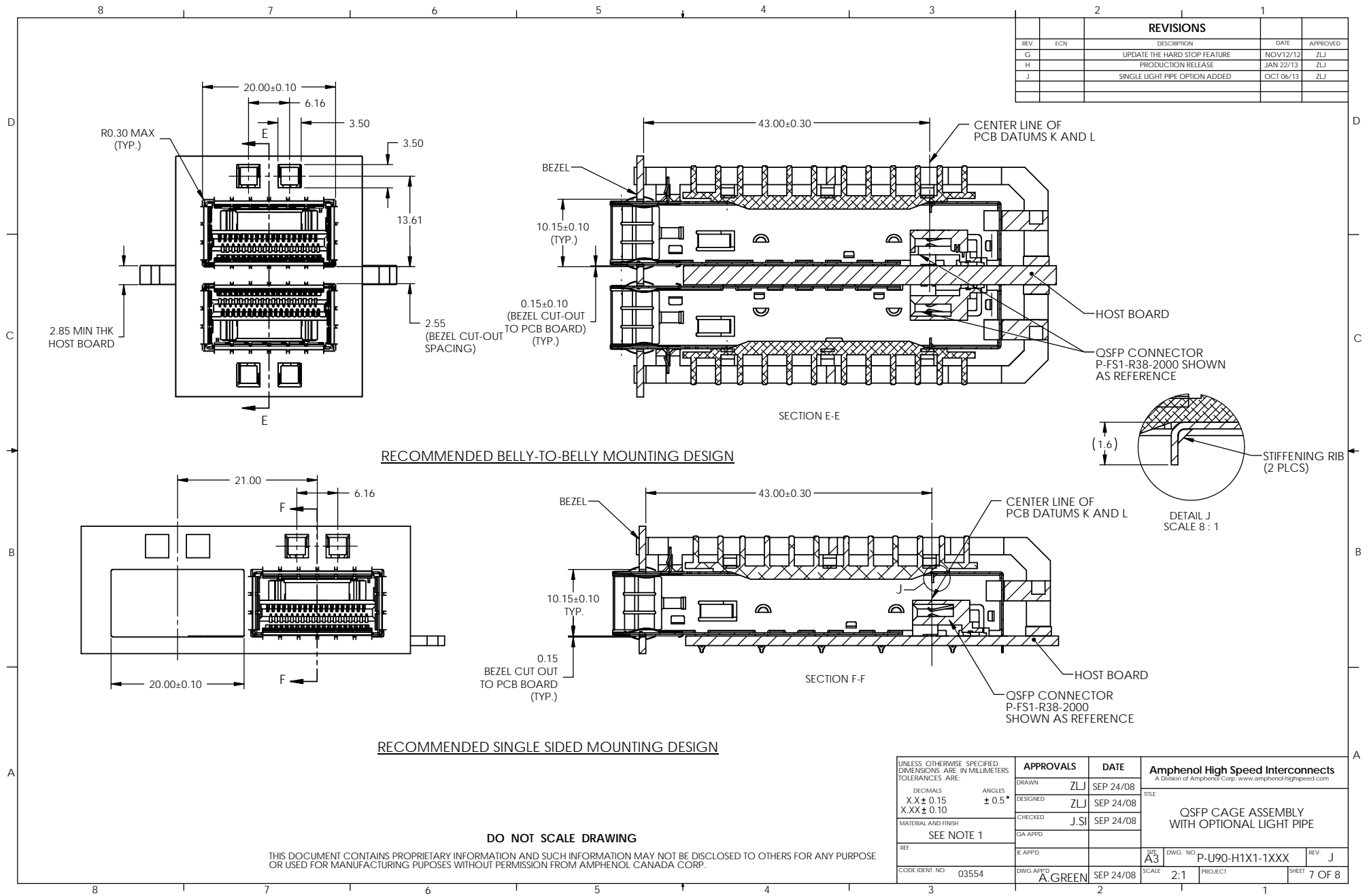
**RECOMMENDED BELLY-TO-BELLY PC BOARD LAYOUT**  
(COMPONENT SIDE OF BOARD)

**DO NOT SCALE DRAWING**

THIS DOCUMENT CONTAINS PROPRIETARY INFORMATION AND SUCH INFORMATION MAY NOT BE DISCLOSED TO OTHERS FOR ANY PURPOSE OR USED FOR MANUFACTURING PUPOSES WITHOUT PERMISSION FROM AMPHENOL CANADA CORP.

UNLESS OTHERWISE SPECIFIED DIMENSIONS ARE IN MILLIMETERS TOLERANCES ARE:  DECIMALS ANGLES X.XX ± 0.15 ± 0.5° X.XX ± 0.10  MATERIAL AND FINISH  SEE NOTE 1  REF.  CODE IDENT. NO. 03554		<b>APPROVALS</b>		<b>DATE</b>	<b>Amphenol High Speed Interconnects</b> A Division of Amphenol Corp. <a href="http://www.amphenolhighspeed.com">www.amphenolhighspeed.com</a>		
		DRAWN	ZLJ	SEP 24/08			
		DESIGNED	ZLJ	SEP 24/08			
		CHECKED	J.SI	SEP 24/08			
		DATE APPD			<b>TITLE</b>  QSFP CAGE ASSEMBLY WITH OPTIONAL LIGHT PIPE		
		DATE APPD					
		DATE APPD	A.GREEN	SEP 24/08	SIZE A3	DWG. NO. P-U90-H1X1-1XXX	REV. J
		SCALE	5:2	PROJECT	SHEET	5 OF 8	





REVISIONS				
REV	ECN	DESCRIPTION	DATE	APPROVED
G		UPDATE THE HARD STOP FEATURE	NOV12/12	ZLJ
H		PRODUCTION RELEASE	JAN 22/13	ZLJ
J		SINGLE LIGHT PIPE OPTION ADDED	OCT 06/13	ZLJ

UNLESS OTHERWISE SPECIFIED DIMENSIONS ARE IN MILLIMETERS TOLERANCES ARE: DECIMALS      ANGLES XX±0.15      ±0.5° XXX±0.10 MATERIAL AND FINISH SEE NOTE 1 REF. CODE IDENT. NO. 03554		<b>APPROVALS</b>		<b>DATE</b>	<b>Amphenol High Speed Interconnects</b> A Division of Amphenol Corp. www.amphenolhighspeed.com TITLE <b>QSPF CAGE ASSEMBLY            WITH OPTIONAL LIGHT PIPE</b>		
		DRAWN	ZLJ	SEP 24/08			
		DESIGNED	ZLJ	SEP 24/08			
		CHECKED	J.SI	SEP 24/08			
		QA APPD			SIZE A3 DWG. NO. P-U90-H1X1-1XXX REV. J SCALE 2:1 PROJECT SHEET 7 OF 8		
		ENG APPD					
		DWG APPD	A.GREEN	SEP 24/08			

