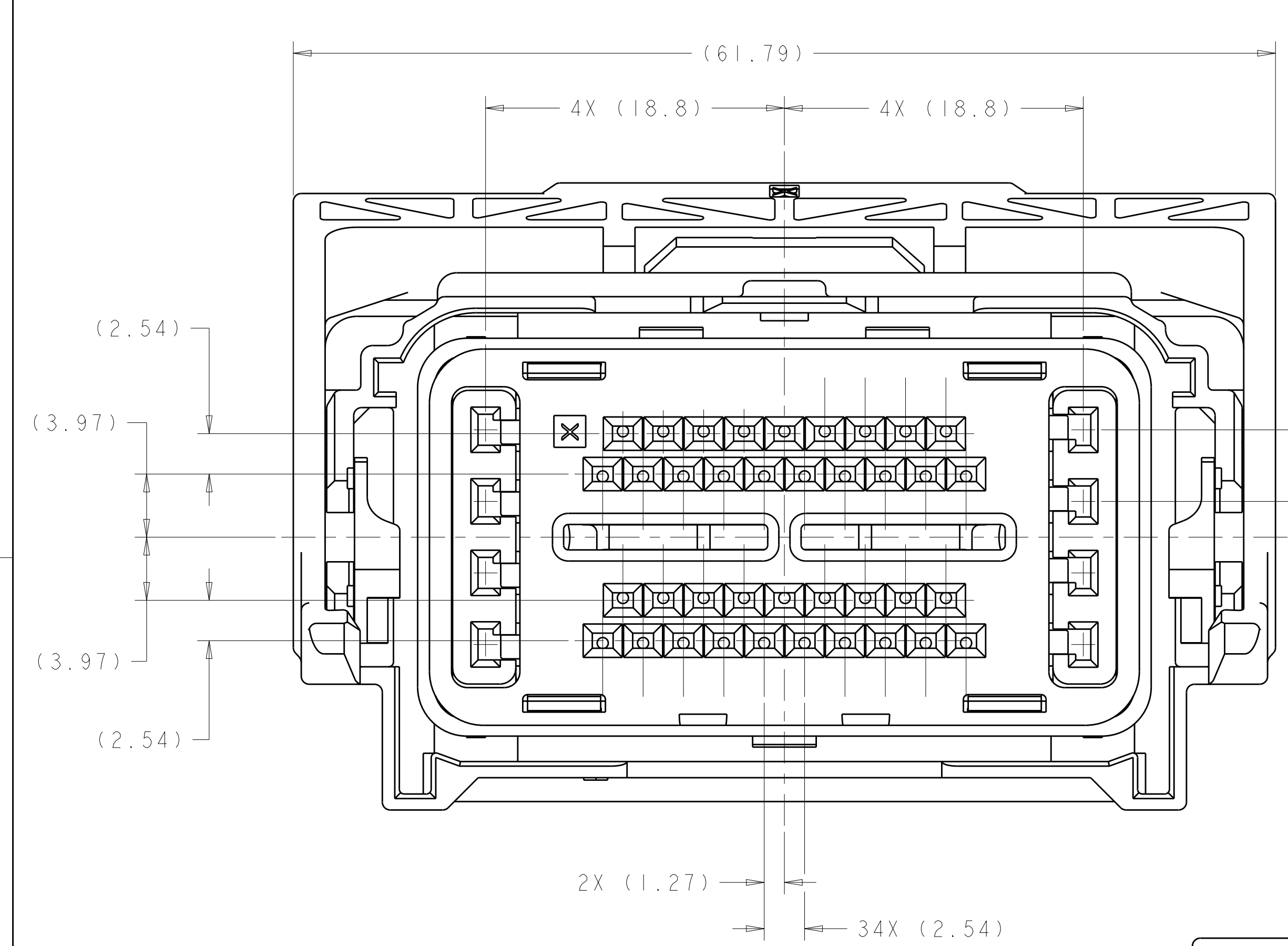
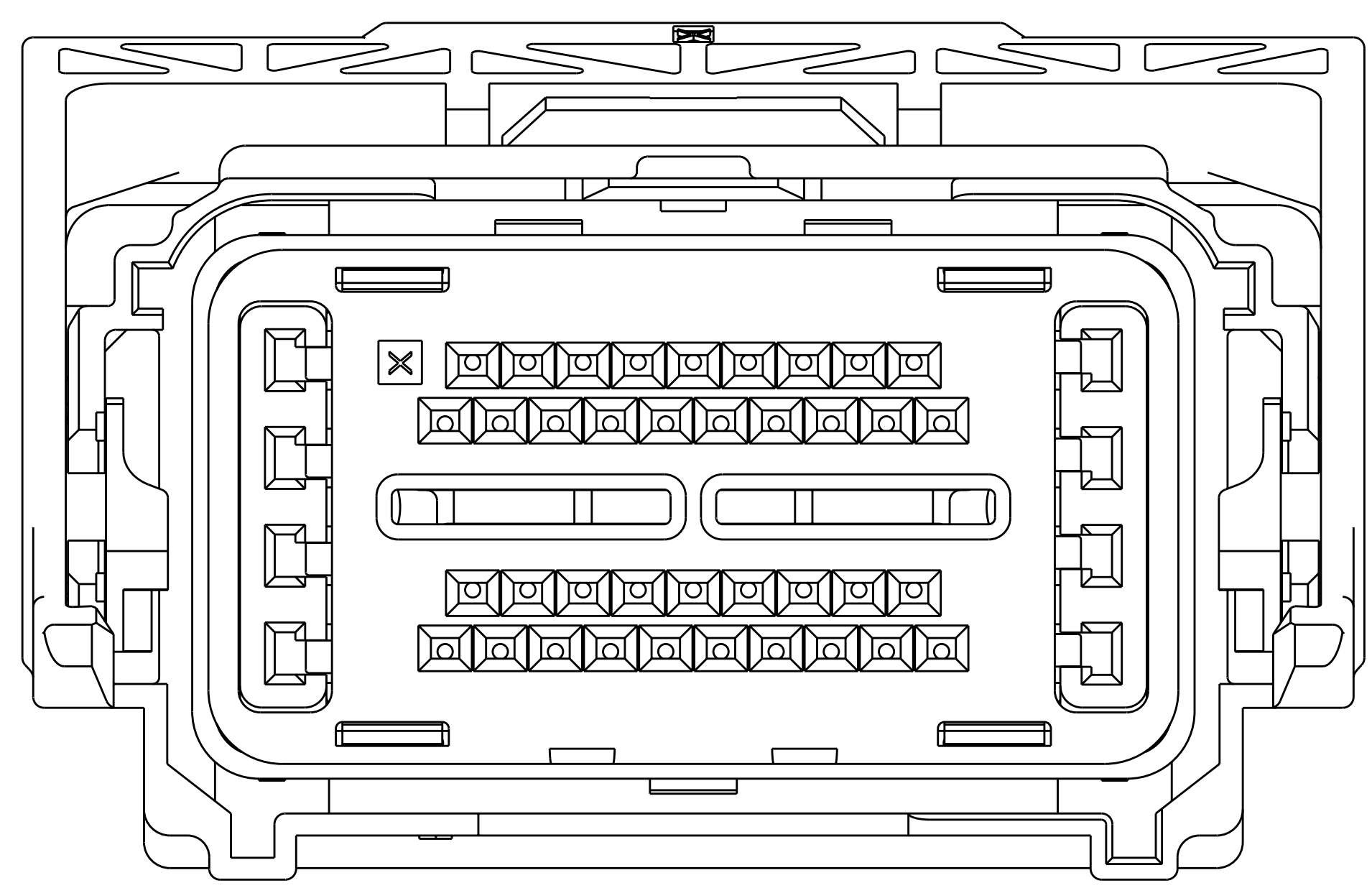


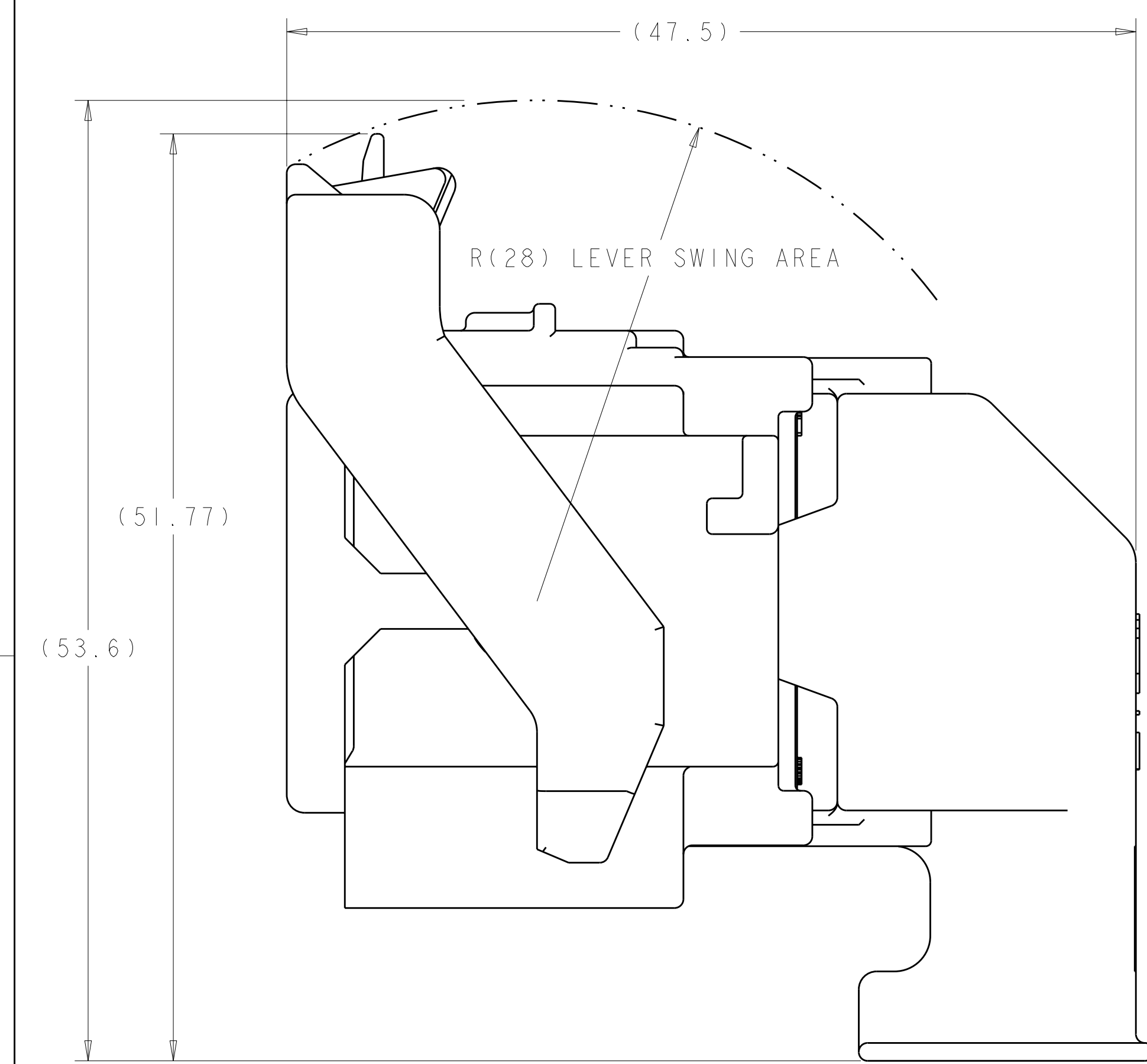
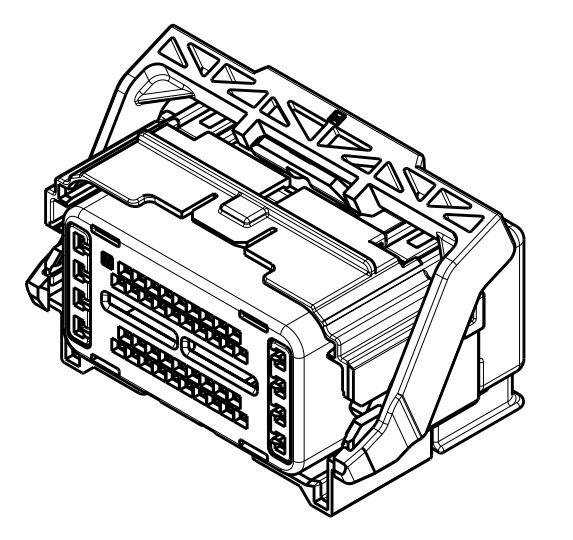
REV	DATE	DESCRIPTION	DATE	BY	APP'D
S10	23APR2009	REVISED PER ECO-09-009758		DLD	DCM
S11	29DEC2009	REVISED PER ECO-09-028550		DLD	DCM



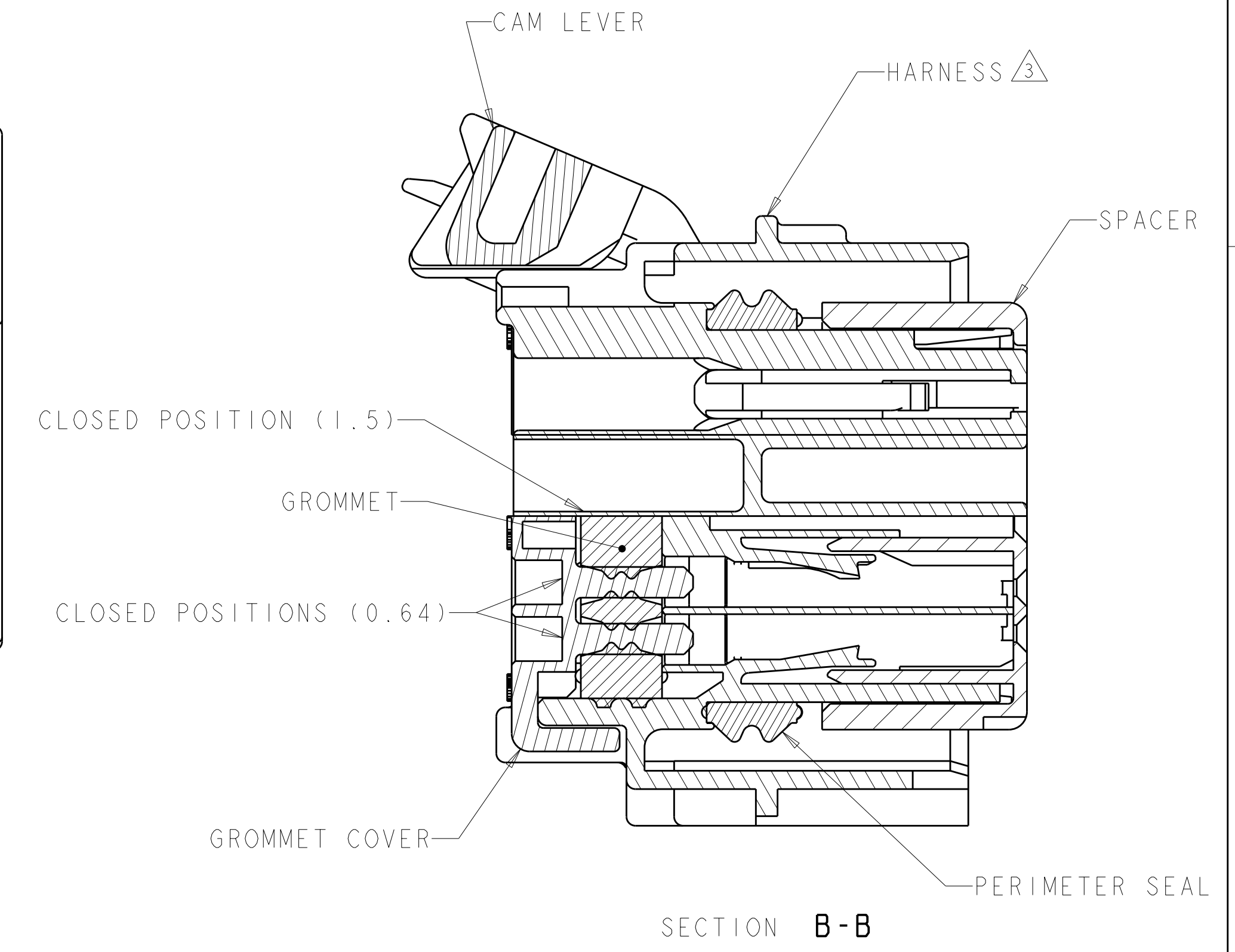
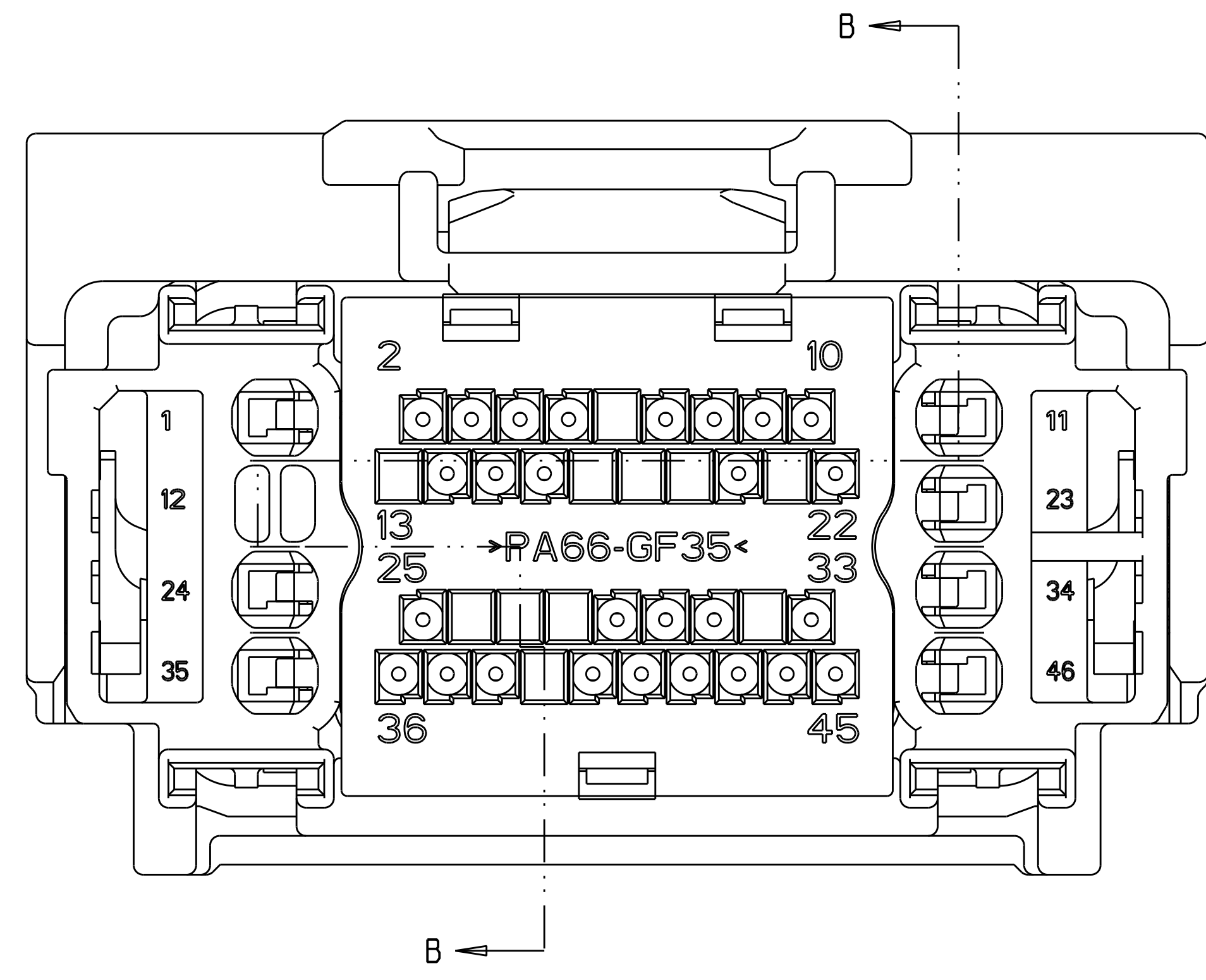
KEYING OPTION "A"
1438082-1



KEYING OPTION "B"
1438082-2



SHOWN WITH CAM LEVER AND SPACER
IN LOADED POSITION WITH
OPTIONAL WIRESHIELD



- △ MATERIAL:
 HARNESS - 35% GLASS FILLED PA66, BLACK
 ALT MAT'L: HARNESS - 30% GLASS FILLED sPS, BLACK
 SPACER - 40% GLASS FILLED PPS+PA66, RED
 ALT MAT'L: 30% GLASS FILLED sPS, RED
 ALT MAT'L: 35% GLASS FILLED PA66, RED
 COVER - 35% GLASS FILLED PA66, BLACK
 ALT MAT'L: COVER - 30% GLASS FILLED LCP, BLACK
 CAM LEVER - 35% GLASS FILLED NYLON, GRAY
 GROMMET - SILICONE, BROWN
 PERIMETER SEAL - SILICONE, GREEN

- 2. CAM LEVER AND SPACER ARE SHIPPED IN PRE-LATCH POSITION.
- △ SEE PINOUT CHART ON SHEETS 2, 3 AND 4 FOR CLOSED CIRCUIT CONFIGURATIONS.
- △ CAVITIES WITH A NUMERIC SYMBOL INDICATES CLOSED TERMINAL LOCATIONS. BLANK CAVITIES INDICATE OPEN TERMINAL HOLE LOCATIONS.

SEE PINOUT CHARTS
PART NUMBER

DIMENSIONS: mm 		TOLERANCES UNLESS OTHERWISE SPECIFIED: 9 PLC ± 1 PLC ±0.3 3 PLC ±0.10 4 PLC ± ANGLES ±°		DWN R. VESTAL 01AUG2003 CHK D. STRAUSSER 01AUG2003 APVD D. STRAUSSER 01AUG2003 PRODUCT SPEC APPLICATION SPEC WEIGHT CUSTOMER DRAWING		Tyco Electronics Harrisburg, PA 17105-3608 NAME 46 WAY PCM CONNECTOR HARNESS ASSEMBLY SIZE CAGE CODE DRAWING NO A 00779 C=1438082 RESTRICTED TO	
MATERIAL SEE TABLE		FINISH SEE TABLE		SCALE 4:1		SHEET 1 OF 5	

THIS DRAWING IS UNPUBLISHED. RELEASED FOR PUBLICATION 20
 BY TYCO ELECTRONICS CORPORATION, ALL RIGHTS RESERVED.

LOC	DIST	REVISIONS			
FX	00	REV	DATE	BY	APPD
-	-	1	SEE SHEET 1	-	-

TERMINAL HOLE POSITION																												PART NUMBER	FORD PART NUMBER									
		44	43	42	41																							7	5		9-1438082-9	2LIT-14A464-TD-044						
		44																														9-1438082-8	2LIT-14A464-TD-043					
						40	39	38													24	21		18	16	15	13	12		9	8	7	5	9-1438082-2	2LIT-14A464-TD-042			
46				43	42	40																												8-1438082-2	2LIT-14A464-TD-041			
						40	39	38																												8-1438082-1	2LIT-14A464-TD-040	
																																				7-1438082-7	2LIT-14A464-TD-039	
																																					7-1438082-6	2LIT-14A464-TD-038
																																					7-1438082-2	2LIT-14A464-TD-037
																																					7-1438082-1	2LIT-14A464-TD-036
																																					7-1438082-0	2LIT-14A464-TD-035
																																					6-1438082-9	2LIT-14A464-TD-034
		44	42																																	6-1438082-8	2LIT-14A464-TD-033	
																																					6-1438082-7	2LIT-14A464-TD-032
																																					6-1438082-5	2LIT-14A464-TD-031
																																					6-1438082-4	2LIT-14A464-TD-030
																																					6-1438082-0	2LIT-14A464-TD-029
																																					5-1438082-9	2LIT-14A464-TD-028
																																					5-1438082-8	2LIT-14A464-TD-027
																																					5-1438082-7	2LIT-14A464-TD-026
46	45																																				5-1438082-4	2LIT-14A464-TD-025
																																					5-1438082-3	2LIT-14A464-TD-024
																																					5-1438082-1	2LIT-14A464-TD-023
46	45	44	43																																		4-1438082-6	2LIT-14A464-TD-022
																																					4-1438082-5	2LIT-14A464-TD-021
																																					4-1438082-4	2LIT-14A464-TD-020
																																					4-1438082-3	2LIT-14A464-TD-019
46	45																																				4-1438082-1	2LIT-14A464-TD-018
																																					3-1438082-9	2LIT-14A464-TD-017
																																					2-1438082-8	2LIT-14A464-TD-016
																																					2-1438082-7	2LIT-14A464-TD-015
																																					2-1438082-6	2LIT-14A464-TD-014
																																					2-1438082-4	2LIT-14A464-TD-013
46	45	44	43																																		2-1438082-1	2LIT-14A464-TD-012
46	45	44	43																																		2-1438082-0	2LIT-14A464-TD-011
																																					1-1438082-7	2LIT-14A464-TD-010
																																					1-1438082-6	2LIT-14A464-TD-009
																																					1-1438082-5	2LIT-14A464-TD-008
																																					1-1438082-4	2LIT-14A464-TD-007
46	45	44	43																																		1-1438082-3	2LIT-14A464-TD-006
46	45	44	43																																		1-1438082-2	2LIT-14A464-TD-005
																																					1438082-9	2LIT-14A464-TD-004
																																					1438082-8	2LIT-14A464-TD-003
																																					1438082-7	2LIT-14A464-TD-002
																																					1438082-0	2LIT-14A464-TD-001
																																					1438082-2	2LIT-14A464-TD-000

PIN-OUT CHART KEYING OPTION "B"

DIMENSIONS:		TOLERANCES UNLESS OTHERWISE SPECIFIED:		DWN R. VESTAL 01AUG2003 CHK D. STRAUSSER 01AUG2003 APVD D. STRAUSSER 01AUG2003 NAME: 46 WAY PCM CONNECTOR HARNESS ASSEMBLY	 Tyco Electronics Harrisburg, PA 17105-3608	SIZE: A1 CAGE CODE: 00779 DRAWING NO: C=1438082	RESTRICTED TO
mm	9 PLC ±.3 1 PLC ±0.3 5 PLC ±.10 4 PLC ±. ANGLES ±. FINISH	WEIGHT: - SCALE: 4:1	SHEET 4 OF 5				
MATERIAL:				CUSTOMER DRAWING		REV: 5	

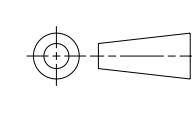
LOC	DIST	REVISIONS				
P	LTB	DESCRIPTION	DATE	DWN	APVD	
-	-	SEE SHEET 1	-	-	-	

45	44	43	42	41	38	27	19	7	5	7-1438735-7	2LIT-14A464-TD-086											
44	42	38	27	7	5	7-1438735-6	2LIT-14A464-TD-085															
45	44	43	42	41	38	19	7	5	4	7-1438735-5	2LIT-14A464-TD-084											
44	42	38	19	7	5	4	7-1438735-4	2LIT-14A464-TD-083														
44	43	42	41	38	7	5	4	7-1438735-3	2LIT-14A464-TD-082													
44	42	38	27	22	7	5	4	7-1438735-2	2LIT-14A464-TD-081													
44	42	38	7	5	4	7-1438735-1	2LIT-14A464-TD-080															
43	42	26	7	6	4	3	7-1438735-0	2LIT-14A464-TD-079														
26	7	6	3	6-1438735-9	2LIT-14A464-TD-078																	
44	43	42	26	19	7	6	4	6-1438735-8	2LIT-14A464-TD-077													
45	44	43	42	41	38	19	7	5	6-1438735-6	2LIT-14A464-TD-076												
44	42	38	19	7	5	6-1438735-5	2LIT-14A464-TD-075															
44	43	42	41	38	19	7	5	6-1438735-4	2LIT-14A464-TD-074													
44	38	27	22	19	8	6	6-1438735-0	2LIT-14A464-TD-073														
44	38	27	22	19	8	7	6	5-1438735-9	2LIT-14A464-TD-072													
44	26	22	19	6	5-1438735-8	2LIT-14A464-TD-071																
44	26	22	19	7	6	5-1438735-7	2LIT-14A464-TD-070															
44	38	27	26	22	19	6	5-1438735-6	2LIT-14A464-TD-069														
44	38	27	26	22	19	7	6	5-1438735-5	2LIT-14A464-TD-068													
44	26	19	7	6	5-1438735-4	2LIT-14A464-TD-067																
44	26	19	6	5-1438735-3	2LIT-14A464-TD-066																	
43	42	26	7	6	4	5-1438735-2	2LIT-14A464-TD-065															
26	7	6	5-1438735-1	2LIT-14A464-TD-064																		
44	42	38	27	22	7	5	4-1438735-6	2LIT-14A464-TD-063														
44	42	38	7	5	4-1438735-5	2LIT-14A464-TD-062																
44	42	38	27	26	22	19	8	6	4-1438735-4	2LIT-14A464-TD-061												
44	42	38	27	26	22	19	8	7	6	4-1438735-3	2LIT-14A464-TD-060											
44	26	19	8	7	6	4-1438735-2	2LIT-14A464-TD-059															
44	26	19	8	6	4-1438735-1	2LIT-14A464-TD-058																
43	42	26	8	7	6	5	4-1438735-0	2LIT-14A464-TD-057														
26	8	7	6	3-1438735-9	2LIT-14A464-TD-056																	
46	45	44	43	34	33	32	31	27	25	20	16	14	13	12	10	9	8	7	6	1	3-1438735-4	2LIT-14A464-TD-055
46	45	43	34	33	32	31	27	25	20	16	14	13	12	10	9	8	7	6	1	2-1438735-7	2LIT-14A464-TD-054	
46	45	44	43	42	40	35	34	33	32	31	28	24	21	19	9	5	4	1	2-1438735-3	2LIT-14A464-TD-053		
45	44	43	42	40	33	32	31	28	21	19	9	5	4	2-1438735-2	2LIT-14A464-TD-052							
44	42	38	27	26	22	7	5	1438735-7	2LIT-14A464-TD-051													
40	39	38	35	34	24	21	18	13	12	9	8	7	5	1438735-6	2LIT-14A464-TD-050							
44	42	38	27	26	22	5	1438735-5	2LIT-14A464-TD-049														
44	42	38	26	22	5	1438735-4	2LIT-14A464-TD-048															
44	42	38	26	7	5	1438735-3	2LIT-14A464-TD-047															
44	42	38	26	5	1438735-2	2LIT-14A464-TD-046																
44	38	29	28	26	7	3	1438735-1	2LIT-14A464-TD-045														

TERMINAL HOLE POSITION

PART NUMBER FORD PART NUMBER

PIN-OUT CHART KEYING OPTION "B" Δ

DIMENSIONS: mm 		TOLERANCES UNLESS OTHERWISE SPECIFIED: 9 PLC ±0.3 1 PLC ±0.10 5 PLC ± 4 PLC ± ANGLES ±° FINISH SEE TABLE		DWN A. HOLT 22OCT2007 CHK S. MANKARYOS 22OCT2007 APVD S. MANKARYOS 22OCT2007		Tyco Electronics Harrisburg, PA 17105-3608	
MATERIAL SEE TABLE		WEIGHT		PRODUCT SPEC APPLICATION SPEC SIZE CAGE CODE DRAWING NO A 00779 C=1438082		RESTRICTED TO SCALE 4:1 SHEET 5 OF 5 REV S 1	
CUSTOMER DRAWING				46 WAY PCM CONNECTOR HARNESS ASSEMBLY			