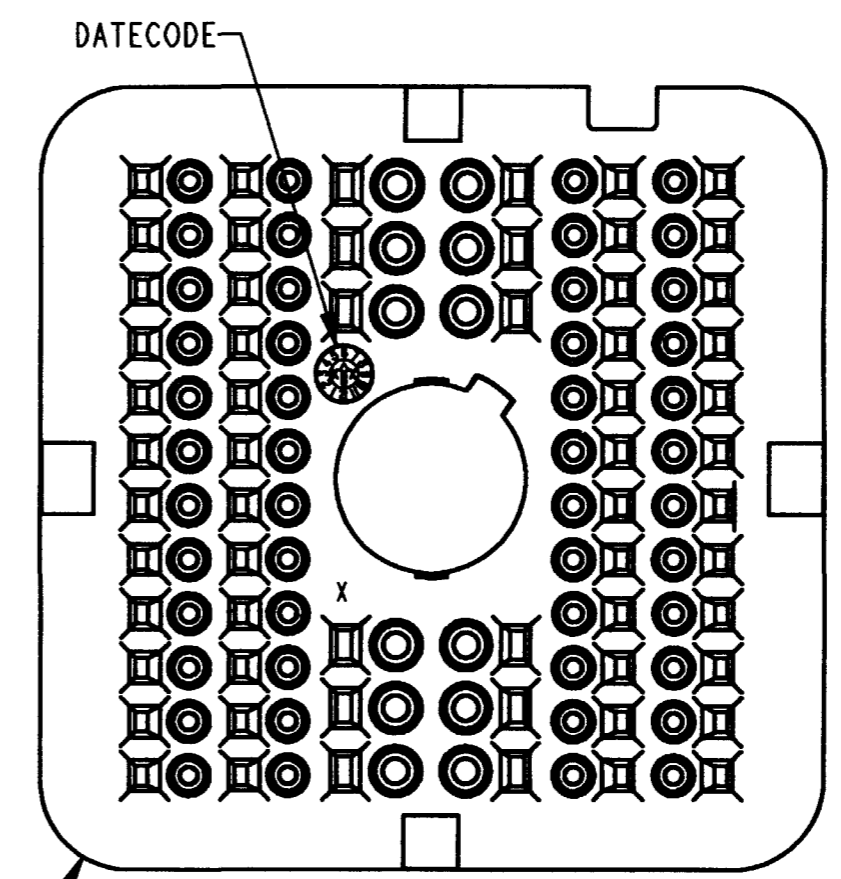
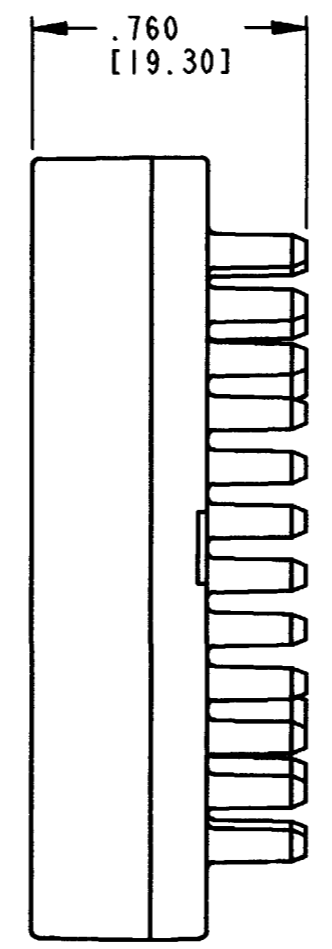
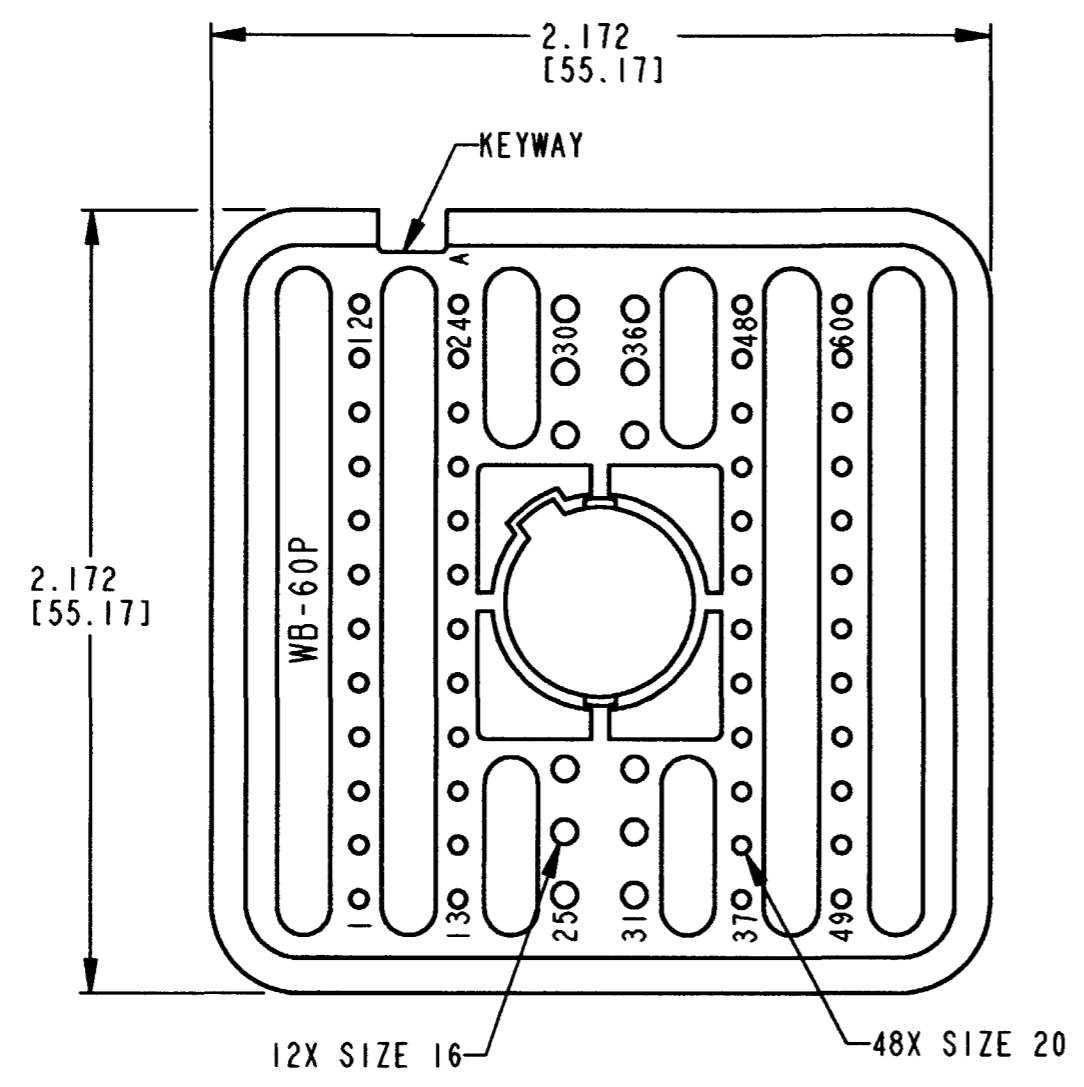


REV
A
WB-60P*

REVISIONS			
SYM	DESCRIPTION	DATE	APPROVED
NC	NEW RELEASE PER E.O. P17208	4-5-01	R.D.R.
A	REVISED PER E.O. P18606	6-14-04	RDR



4X R.250 [6.35]

- NOTES:
1. DIMENSIONS ARE IN INCHES [mm].
 2. DIMENSION TOLERANCE: $\pm .025$ [.64].
 3. THIS WEDGE LOCK MATES WITH DRB12-60P*(N)E-**** RECEPTACLE (* = A,B,C,D KEYS; **** = ALL MODIFICATIONS). CONSULT FACTORY FOR MODS.
 4. MATERIAL: PLASTIC
 5. SEE SHEET 2 FOR OTHER KEY ARRANGEMENTS.

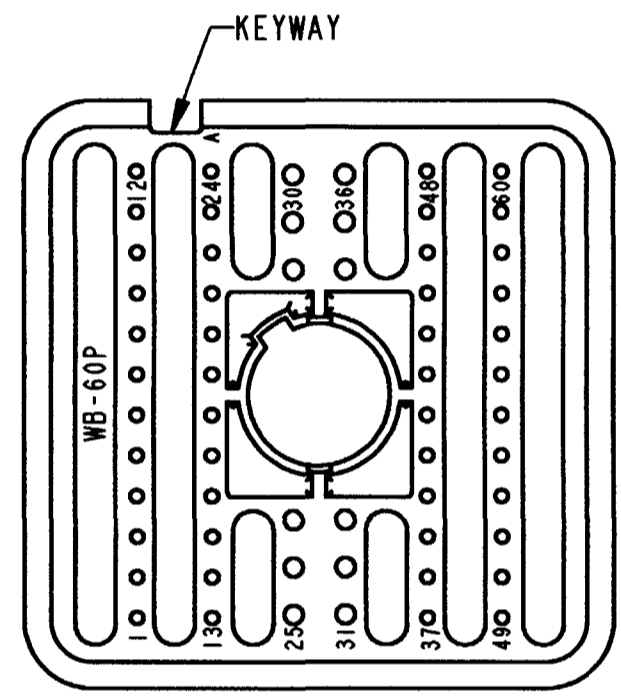
SIGNATURE & DATE	
DR	S. PALLUTH 04/02/01
CHK	[Signature] 5/11/04
PE	[Signature] 6/10/04
APPD	R. Ried 6-14-04
SCALE	NONE WT

WEDGE LOCK, RECEPTACLE
60 CONTACTS
KEYS A,B,C & D
DRB SERIES

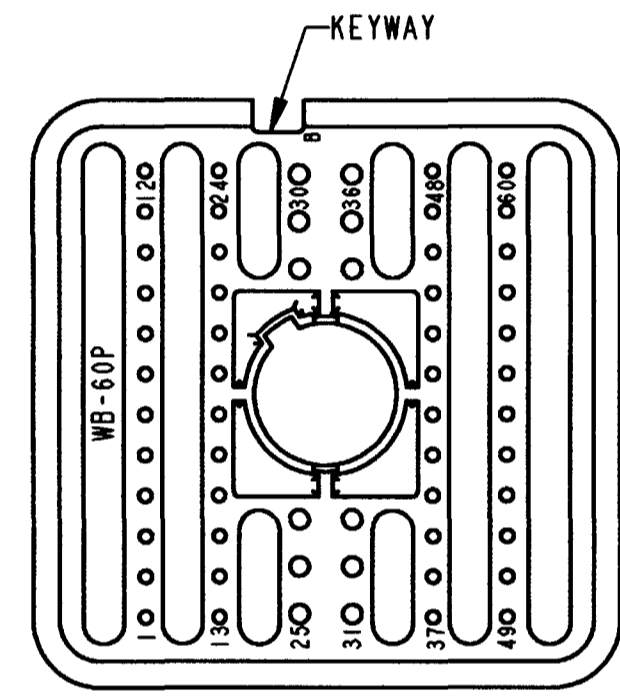
ENVELOPE

CP	EP059	MATL. CODE
The Deutch Company DEUTSCH I.P.D. 3850 INDUSTRIAL AVE. HEMET, CALIF. 92545		
B	WB-60P*	
DWG SIZE	CODE 11139	SHEET 1 OF 2

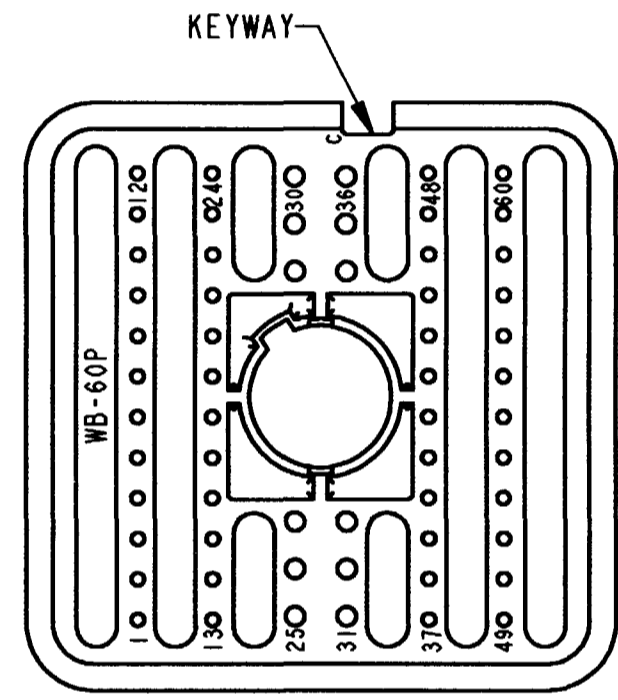
REV A	WB-60P*	REVISIONS		
		SYM	DESCRIPTION	DATE
		SEE SHEET 1	6-14-04	POK



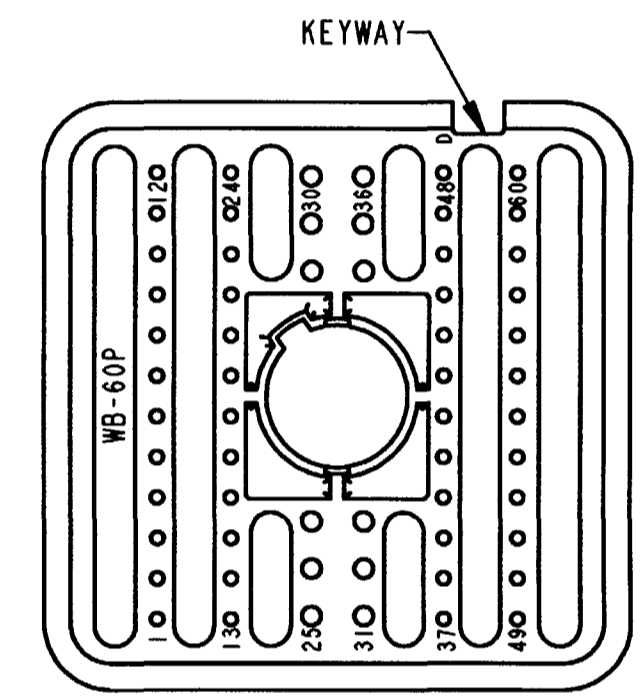
WB-60PA
KEY ARRANGEMENT -A-
COLOR: GREY



WB-60PB
KEY ARRANGEMENT -B-
COLOR: BLACK



WB-60PC
KEY ARRANGEMENT -C-
COLOR: GREEN



WB-60PD
KEY ARRANGEMENT -D-
COLOR: BROWN

NOTES:

SIGNATURE & DATE		WEDGE LOCK, RECEPTACLE 60 CONTACTS KEYS A, B, C & D DRB SERIES	CP	EP059	MATL CODE
DR	S. PALLATH 04/02/01		The Deutch Company DEUTSCH I.P.D. 3850 INDUSTRIAL AVE. HEMET, CALIF. 92545		
CHK	B. B. 6/14/04		B	WB-60P*	
PE	D. Meyer 6/10/04			DWG SIZE	CODE 11139
APPD	R. Reed 6-14-04	ENVELOPE			
SCALE	NONE	WT			