

EH TQG PANEL MOUNT CONNECTORS

NEW PRODUCT BULLETIN 605

FEATURES & BENEFITS

- Same high quality connectors as our popular TQG Series, except both male and female versions utilize the same size panel cut-out, simplifying installation and modification.
- Rugged metal construction.
- Available in nickel or black finish.
- Available with 3, 4, 5, 6 or 7 contacts for male, plated in silver or gold and 3, 4 and 5 contacts for female.
- RoHS Compliant.
- The perfect match for our QGPK Series of I/O panels and our WP Series of wall-plates. More info available on our website.

APPLICATIONS

- Communications equipment
- Wall plates
- Custom I/O panels
- Pro audio equipment



SWITCHCRAFT®

A H E I C O C O M P A N Y

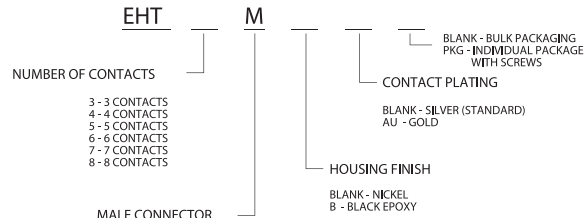
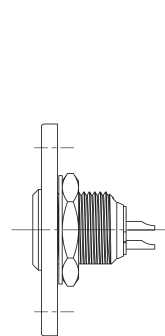
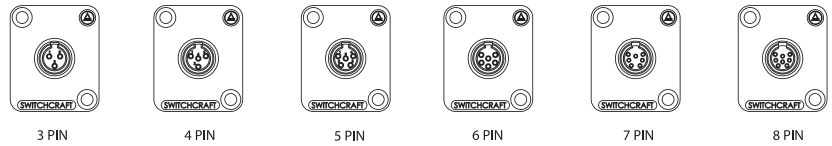
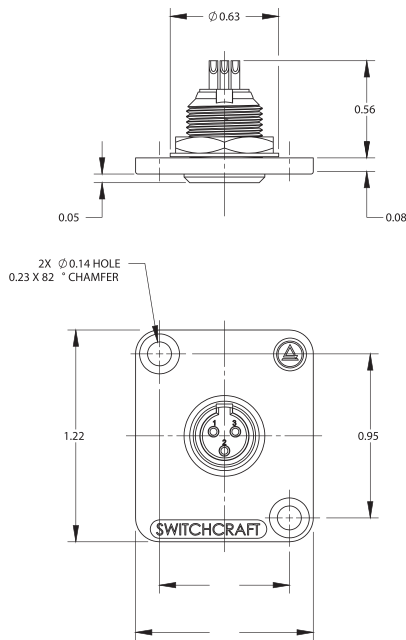


5555 N Elston Ave | Chicago, IL 60630 | P: 773.792.2700 | F: 773.792.2129 | www.switchcraft.com | Made in USA.

EH TQG PANEL MOUNT CONNECTORS

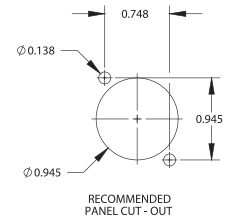
NEW PRODUCT BULLETIN 605

MALE EH TQG PANEL CONNECTORS

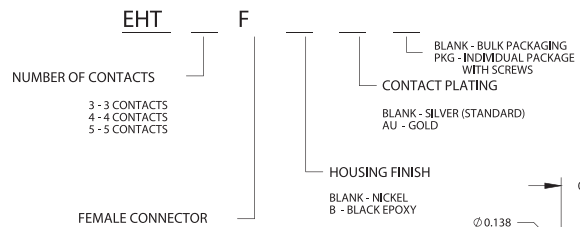
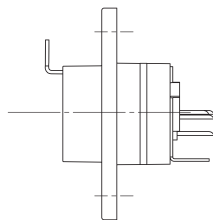
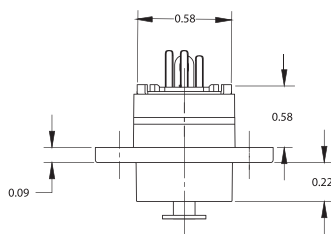


NOTES:

1. MATERIALS:
PLATE - ZINC ALLOY, PLATED
SHELL - COPPER ALLOY, NICKEL PLATED
INSERT - THERMOPLASTIC, BROWN
CONTACT PINS - COPPER ALLOY, PLATED
WASHER - COPPER ALLOY, NICKEL PLATED
NUT - COPPER ALLOY, NICKEL PLATED
2. THIS PART IS RoHS COMPLIANT.



FEMALE EH TQG PANEL CONNECTORS



NOTES:

1. MATERIALS:
HOUSING - ZINC ALLOY, PLATED
INNER HOUSING - COPPER ALLOY, NICKEL PLATED
FRONT AND REAR INSERTS - THERMOPLASTIC, BROWN
CONTACT PINS - COPPER ALLOY, PLATED
SOLDER TERMINAL - COPPER ALLOY, TIN PLATED
LATCH - COPPER ALLOY, NICKEL PLATED
RELEASE LEVER - STEEL, NICKEL PLATED
LEVER RETURN SPRING, STAINLESS STEEL
2. THIS PART IS RoHS COMPLIANT.

