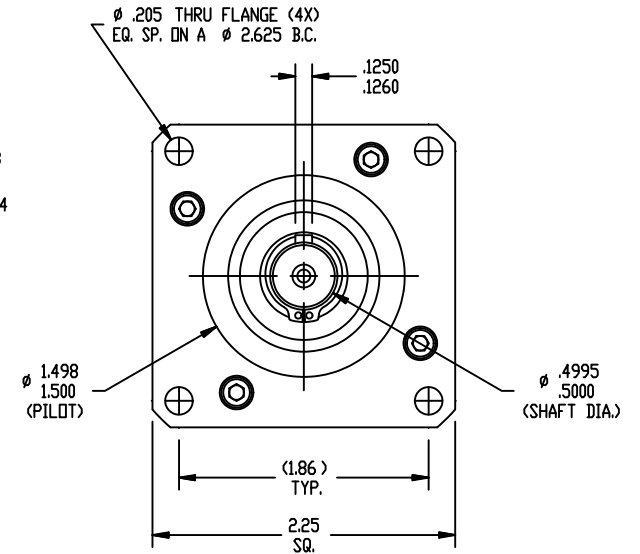
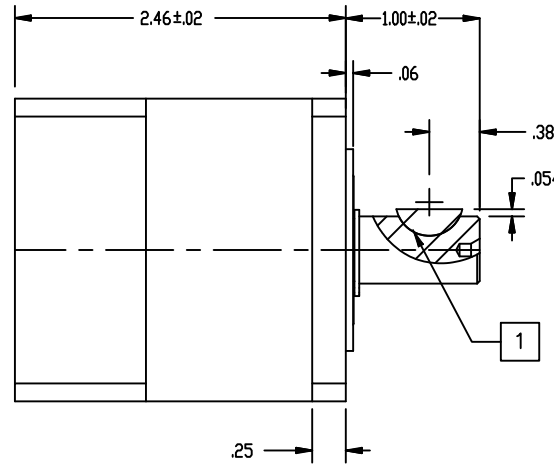
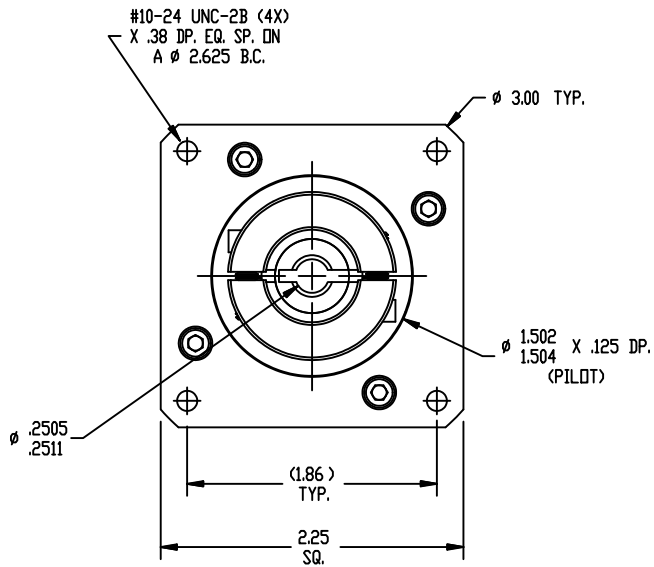


REVISIONS

REV	DESCRIPTION	DATE	APPROVED
A	INITIAL RELEASE ECO 6709	2/22/13	J Kordik



NOTES: UNLESS OTHERWISE SPECIFIED

- 1 #404 WOODRUFF KEY.
2. 23VL005 RATIO- 5:1
3. FOR TECHNICAL DETAILS, CONTACT APPLIED MOTION PRODUCTS.

<p>TOLERANCES</p> <p>DECIMALS: [MM] INCH X.XXX = ± .005 X.XX = ±[0.13] .010 X.X = ±[0.25] .020</p> <p>ANGLES: MACH. = ±.5° CHAM. = ±5°</p> <p>COMPUTER DATA BASE DRAWING</p>	<p>THIRD ANGLE PROJECTION</p>		<p>APPLIED MOTION PRODUCTS, INC.</p> <p>OUTLINE, GEAR HEAD, VL23, 1 STAGE</p>	
	<p>APPROVALS</p> <p>DRAWN R. JONEZ</p> <p>CHECKED</p>	<p>DATE</p> <p>2/22/13</p>		
	<p>APPROVED</p>	<p>SCALE: FULL</p>	<p>SHEET 1 OF 1</p>	